



## CASE SERIES

# Churg–Strauss syndrome: Case series<sup>☆</sup>

T.M. Alfaro<sup>a,\*</sup>, C. Duarte<sup>a</sup>, R. Monteiro<sup>a</sup>, A. Simão<sup>a</sup>, S. Calretas<sup>a</sup>,  
J.M. Nascimento Costa<sup>a,b</sup>

<sup>a</sup> Serviço de Medicina Interna, Hospitais da Universidade de Coimbra, Coimbra, Portugal

<sup>b</sup> Professor de Medicina, Faculdade de Medicina, Universidade de Coimbra, Coimbra, Portugal

Received 1 January 2011; accepted 29 August 2011

### KEYWORDS

Churg–Strauss  
syndrome;  
Vasculitis;  
Review;  
Case series

**Abstract** Churg–Strauss syndrome (CSS) is a systemic necrotizing vasculitis of the small and medium vessels, associated with extravascular eosinophilic granulomas, peripheral eosinophilia and asthma.

This is a rare syndrome of unknown etiology, affecting both genders and all age groups.

CSS patients usually respond well to steroid treatment, although relapses are common after it ends. Timely diagnosis and treatment generally lead to a good prognosis with a 90% survival rate at one year.

A brief review of CSS is presented, with particular attention to diagnosis, therapy and recent developments in this area.

The authors then report and discuss the clinical, laboratory and imaging characteristics of four patients admitted to an Internal Medicine Department with this diagnosis. The treatment, response and follow-up of the cases are also described.

© 2011 Sociedade Portuguesa de Pneumologia. Published by Elsevier España, S.L. All rights reserved.

### PALAVRAS-CHAVE

Síndrome de  
Churg–Strauss;  
Vasculite;  
Revisão;  
Casuística

### Síndrome de Churg–Strauss: casuística

**Resumo** A síndrome de Churg–Strauss (SCS) é uma vasculite sistémica necrotizante, que afeta os vasos de pequeno e médio calibre e se associa a granulomas eosinofílicos extravasculares, eosinofilia periférica e asma.

É uma síndrome rara, de etiologia desconhecida e que afeta ambos os géneros e todos os grupos etários.

Os doentes com SCS geralmente apresentam boa resposta à terapêutica com glucocorticoides, embora as recidivas sejam frequentes após a sua suspensão. O diagnóstico e terapêutica atempada levam geralmente a um bom prognóstico, com uma sobrevivência de 90% um ano após o diagnóstico.

<sup>☆</sup> Please cite this article as: Alfaro TM. Síndrome de Churg–Strauss: casuística. Rev Port Pneumol. 2012; doi:10.1016/j.rppneu.2011.12.001

\* Corresponding author.

E-mail address: [alfarotm@gmail.com](mailto:alfarotm@gmail.com) (T.M. Alfaro).

Neste artigo é apresentada uma breve revisão da SCS, com particular atenção ao diagnóstico, terapêutica e progressos recentes nesta área.

De seguida, os autores apresentam e discutem as características clínicas, laboratoriais e imagiológicas de quatro doentes internados num Serviço de Medicina Interna com este diagnóstico. O tratamento instituído, as respostas observadas e o seguimento dos casos são também descritos.

© 2011 Sociedade Portuguesa de Pneumologia. Publicado por Elsevier España, S.L. Todos os direitos reservados.

## Introduction

### Definition and epidemiology

Churg–Strauss syndrome (CSS), also called granulomatous and allergic angiitis is a necrotizing systemic vasculitis, which was first described in 1951 by the pathologists J. Churg and L. Strauss in an autopsy series of patients with severe asthma.<sup>1</sup> These patients had hypereosinophilia and systemic vasculitis with the histological examination showing extravascular granulomas, tissue eosinophilia and necrotizing vasculitis.

Further case reports led to an improvement in the definition; the American College of Rheumatology (ACR) classification criteria in patients with biopsy proven vasculitis is the most widely used today.<sup>2</sup> These criteria include asthma, greater than 10% peripheral eosinophilia, mono or polyneuropathy, migratory pulmonary infiltrates, sinus anomalies and extravascular eosinophils in the biopsy. The presence of four of these criteria in a patient with biopsy proven vasculitis has a sensitivity of 85% and a specificity of 99.7% for CSS.<sup>2</sup>

CSS is a very rare disease, with an incidence of 1–7 cases per million per year.<sup>3,4</sup> The disease affects both genders equally and can present at any age, with an average age of 50 at presentation.<sup>5,6</sup>

### Etiology

The etiology of CSS is unknown. Proposed hypotheses include an auto-immune process, possibly associated with genetic and environmental factors.<sup>7</sup>

In the last decade, the leukotriene receptor antagonists (LTRAs), including zafirlukast and montelukast have been reported to be associated with the development of CSS. This is probably related to steroid withdrawal after starting LTRAs in patients with hitherto attenuated CSS or the prescription of LTRAs to patients with worsening asthma which was actually unrecognized worsening CSS.<sup>8,9</sup> In fact there have been reports of CSS after starting inhaled steroids<sup>10</sup> and omalizumab<sup>11</sup> and a recent case crossover study showed that several asthma control medications are associated with the onset of CSS, supporting the hypothesis that an aggravation of asthma is associated with CSS onset, rather than a specific drug.<sup>12</sup>

### Pathophysiology

The pathophysiology of CSS is not sufficiently well known. A particular feature of the disease is the prominent blood

and tissue eosinophilia which is related to the activity of the disease.<sup>13</sup> In patients with active disease, eosinophils express surface markers of activation<sup>14</sup> and secrete proteins that lead to tissue injury.<sup>15</sup> The eosinophilia seems to be maintained by increased release of IL-5, produced mainly by activated Th2 lymphocytes.<sup>16</sup> In effect, the anti-IL5 antibody mepolizumab turned out to be effective in refractory CSS in a recent study.<sup>17</sup> Although CSS is mainly associated with a Th2 profile, recent studies have also shown possible imbalances in the activity of Th1,<sup>18</sup> T regulatory<sup>19</sup> and Th17 lymphocyte lineages.<sup>20</sup> Anti-neutrophil cytoplasmic antibodies (ANCA), specifically anti-myeloperoxidase antibodies seem to have a pathogenic role in the vasculitic lesions, possibly through the activation of neutrophils leading to the release of reactive oxygen species and proteolytic enzymes.<sup>21</sup> The proposed roles of eosinophils and ANCA in disease pathogenesis are in agreement with the recent reports of different disease manifestations in ANCA-positive and ANCA-negative patients.

### Clinical manifestations

The clinical manifestations of CSS are generally described in three stages.

The first stage (prodromal stage) can last for several years. Atopic asthma and rhinitis are the predominant features, usually difficult to control.

In the second stage (eosinophilic stage), an intense tissue infiltration by eosinophils is seen in various organs, including the lungs and gastro-intestinal (GI) tract, eventually evolving into Loeffler's syndrome or eosinophilic gastroenteritis.

The third (vasculitic) stage of the disease is characterized by an intense systemic vasculitis, with general symptoms usually predating the involvement of various organs by this process.<sup>22</sup>

One of the systems that is frequently affected by the vasculitis is the peripheral nervous system, with involvement of the *vasa vasorum* and development of mononeuritis multiplex.<sup>23</sup> The GI tract is also affected, with abdominal pain, gastroenteritis or even full-blown acute abdomen as symptoms.<sup>24</sup> Cardiac involvement can present as myocarditis, heart failure, pericarditis, or even coronary vasculitis and consequent myocardial ischemia. About half of all the CSS associated deaths are caused by cardiac lesions.<sup>25</sup> The respiratory system is involved in virtually all patients, not only with asthma in the first clinical stage, but also with infiltrates in the chest X-ray, that are present in 37–77% of patients. Pleural effusion can also be seen in up to a third of the patients.<sup>26–28</sup>

Clinically significant renal disease is both less frequent and serious in CSS than in other types of vasculitis.<sup>24</sup>

### Disease subtypes

Recent studies have demonstrated the existence of two discrete CSS patient populations. ANCA positive patients (40% in these studies) present more frequently with vasculitis related manifestations, including renal and peripheral nervous system involvement as well as alveolar hemorrhage, purpura and vasculitis in the biopsy. ANCA negative patients more frequently have manifestations related to eosinophil infiltration, including cardiac, pulmonary and systemic symptoms. It is still unclear how relevant these new findings are for the therapy and prognosis of CSS.<sup>29</sup>

### Laboratory findings and diagnosis

The diagnosis of CSS is generally dependent on histological analysis, although this may not be needed if the patient has eosinophilia and the typical clinical manifestations. The most frequent tissue samples come from the GI tract (eosinophilic enterocolitis with necrotizing or granulomatous vasculitis), and from the skin, where several patterns of lesion can be seen (even in the same patient), including extravascular granulomas, leukocytoclastic vasculitis and cutaneous polyarteritis nodosa.

Nerve biopsies frequently demonstrate necrotizing epineural vasculitis. The lung is also frequently sampled, revealing patterns of bronchial asthma, eosinophilic pneumonia and extravascular granulomatosis.<sup>30–32</sup>

The two most suggestive and frequent histological findings of CSS are necrotizing vasculitis and extravascular necrotizing granulomas, with eosinophilic infiltrates. These findings, however, are not pathognomonic.<sup>33</sup>

Blood tests show a significant increase in inflammation markers and intense peripheral eosinophilia. The titers of IgE and rheumatoid factor are also frequently elevated. ANCAs are typically present (40–70% of patients), showing a perinuclear pattern in almost all cases (p-ANCAs).<sup>5</sup>

The differential diagnosis includes hypereosinophilic idiopathic syndrome, chronic eosinophilic pneumonia and various other forms of systemic vasculitis.<sup>5,34,35</sup>

### Treatment

The treatment of CSS is similar to various other small-vessel vasculitis. High dose steroids are the mainstay of treatment and generally begin with a dose of 1 mg/Kg/day (max 60 mg/day) of prednisolone, maintained until symptoms are controlled and then slowly tapered (for one year). In patients with factors which have a poor prognosis (central nervous system, renal, cardiac or gastro-intestinal involvement), the combination of steroids and cyclophosphamide produced better control and sustained remission rates,<sup>6</sup> compared to steroids alone and is therefore included for remission induction in the European League Against Rheumatism (EULAR) recommendations for the management of small and medium vessel vasculitis. In non-organ threatening or non-life threatening disease, the same document

recommends the use of methotrexate as a less toxic alternative to cyclophosphamide. For remission maintenance, the combination of low-dose steroids and azathioprine, leflunomide or methotrexate is used.<sup>36</sup>

Patients not responding or who relapse despite appropriate therapy are managed with different therapies, including mycophenolate mofetil,<sup>37</sup> human intravenous immunoglobulin,<sup>38</sup> and biological agents including rituximab<sup>39</sup>, interferon-alpha,<sup>40,41</sup> and mepolizumab.<sup>17,42</sup>

### Prognosis

In the absence of treatment, CSS can be rapidly fatal after vasculitis has set in. Treatment with steroids leads to a significant response in 90% of patients, although about 20% will need additional cytotoxic therapy.

Treatment dramatically changes the prognosis of CSS patients (over 90% survival in one year). Nevertheless, following suspension of steroids, recurrent disease is observed in up to 25% of patients in the first five years, with asthma and sinusitis being the most frequent manifestations.<sup>43</sup> Most recurrences show a good response to steroids. The leading cause of chronic morbidity in patients with CSS is neurological disease.<sup>37,43</sup>

Mortality in CSS patients is usually the result of cardiac or GI involvement, with myocarditis, heart failure, pericarditis, or even coronary vasculitis in the former and hemorrhage, perforation or entero-colic necrosis in the latter. Hemorrhagic stroke can also be a cause of death.

Through the analysis of a large number of CSS cases, Guillevin et al. recognized five factors associated with a worse prognosis, if they are present at the time of diagnosis (cardiomyopathy, CNS involvement, severe GI disease, renal failure with creatinine over 1.58 mg/dl and proteinuria over 1 g/day).<sup>44</sup>

### Methods

All patients admitted to the Department of Internal Medicine during a 24-year period fulfilling ACR diagnosis criteria for CSS were included. The clinical laboratory, imaging and follow-up data was attained through the analysis of the clinical files.

### Results

#### Patients

Four patients were included (2M/2F), with an average age of 48 years (34–60) at diagnosis.

#### Case summaries

*Patient 1.* A 46-year-old female patient presented with weight loss, paresthesia, myalgia, arthralgia and loss of muscular strength in her lower limbs in the previous month, and abdominal pain, diarrhea, fever and night sweats in the last four days. She also complained of productive cough and worsening dyspnea in the last few days. Past medical history included asthma and sinusitis in the last two years. Physical examination revealed maculo-papular lesions in the

**Table 1** Patients clinical characteristics at the time of diagnosis.

Patient	1	2	3	4
Age	46	34	60	53
Gender	F	M	F	M
Asthma (years)	+ (2)	+ (4)	+ (9)	+ (3)
Sinusitis	+	+	+	+
Systemic symptoms	+	+	+	+
Peripheral nervous system	MM	PN	PN	RP
Gastrointestinal	+	–	+	+
Cardiovascular	–	–	–	+
Renal	–	–	–	–
Skin	+	+	–	+

MM: mononeuritis multiplex, PN: polyneuropathy, RP: radiculopathy.

left foot, generalized hyporeflexia, and loss of muscular strength in the lower limbs. Blood tests showed marked eosinophilia and skin biopsy showed signs of vasculitis with eosinophils in vessel walls. Treatment with high dose oral prednisolone and cyclophosphamide led to a rapid response and the patient remained asymptomatic. Three years later she had a relapse and was treated with the same regimen, with good results.

**Patient 2.** A 34-year-old male patient was admitted due to complaints of asthenia, anorexia, diffuse myalgia and weight loss in the last three weeks. He also complained of dyspnea, cough with sputum and skin lesions in the lower limbs. Medical history was significant for asthma and sinus disease with polyposis for 4 years. Physical exam was compatible with polyneuropathy. Blood tests revealed significant eosinophilia and chest CT revealed a pulmonary infiltrate. Skin biopsy revealed aspects of Churg–Strauss granuloma and extravascular eosinophils caused. There was a rapid and significant improvement after treatment with high dose prednisolone and the patient remains on follow-up for controlled asthma.

**Patient 3.** A 60-year-old female patient presented having suffered from pain and paresthesia in the left hand and right leg for the previous week, and abdominal pain and diarrhea for two months. She had been diagnosed with asthma and rhinitis for 9 years. On neurological exam she displayed ataxia and loss of muscular strength in the lower limbs. Blood tests revealed marked eosinophilia and chest imaging showed migratory pulmonary infiltrates. Biopsy of colonic mucosa was compatible with eosinophilic colitis. She was treated with prednisolone and gabapentine, and later IV cyclophosphamide but maintained significant neurological complaints. This led to the use of IV human immunoglobulin with improvement after 6 cycles.

**Patient 4.** A 53-year-old male admitted for a 4-month history of cutaneous vasculitis in the lower limbs, and abdominal pain and diarrhea in the previous month. Past medical history included asthma for three years, alcohol abuse until 18 months earlier and dilated cardiomyopathy with severe heart failure for two years. Physical exam showed hyporeflexia, hypoesthesia and lower limb petechiae. Blood tests revealed eosinophilia and sinus CT showed signs of sinusitis. Biopsy of colonic mucosa was compatible with eosinophilic colitis and skin biopsy showed eosinophilic vasculitis. Treatment with prednisolone caused rapid improvement of all complaints, but the

patient died two weeks after release, of undetermined cause.

### Description of case series

**Clinical characteristics.** The patients' clinical characteristics are summarized in Table 1.

All patients had systemic, pulmonary and nervous system involvement. Systemic symptoms included fever, weight loss and diffuse myalgia. All patients had asthma, and two also had complaints of worsening dyspnea and productive cough. Although only two patients complained of paresthesia, on examination all had neurological abnormalities, including muscle weakness in two patients and hypoesthesia in all four. The GI tract was affected in three patients, with diarrhea and abdominal pain.

Skin changes were found in three patients (signs of vasculitis in the lower limbs).

Only one patient had cardiac involvement, which was most likely prior to CSS, since it had started before all symptoms except for asthma and was probably associated with chronic alcohol abuse. No renal, ophthalmic or joint abnormalities were reported in any patient. Neither was CNS involvement described.

**Past medical history.** Past medical history was significant for previously diagnosed asthma in all patients, two of them medicated with LTRAs. One patient also had dilated cardiomyopathy with severe heart failure, probably due to chronic alcohol abuse.

**Laboratory abnormalities.** The summary of laboratory characteristics of all patients is presented in Table 2.

All patients had leukocytosis and eosinophilia at the time of diagnosis, with the peripheral blood eosinophils varying between 7800 and 35,000 G/L. Erythrocyte sedimentation rate was elevated in three patients. The levels of IgE were quantified in three patients and were elevated in two of them. Three patients were tested for ANCAs, but none was positive.

Three of the patients had relevant changes in the chest X-ray, although only one showing migratory infiltrates generally associated with CSS. Chest CT was performed in three patients revealing abnormalities in both the interstitium and the large bronchi (Fig. 1).

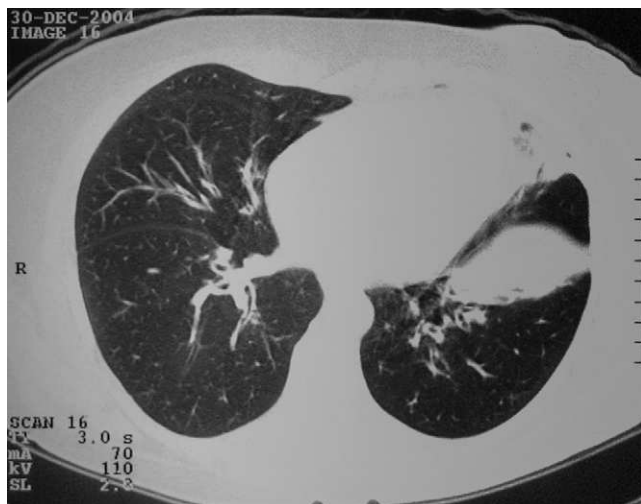
**Histological analysis.** All patients had a histological confirmation of the vasculitis diagnosis. Two had skin biopsy, one had colonic mucosal biopsy and the fourth had both skin



**Table 2** Patients laboratory characteristics.

Patient	1	2	3	4
Peripheral leukocytes (cells/mm <sup>3</sup> )	26,500	19,100	44,200	15,800
Peripheral eosinophils (cells/mm <sup>3</sup> )	10,600	8800	35,300	7800
ESR (mm)	56	53	17	82
CRP (mg/dl)	N/A	5.9	3	9
Rheumatoid factor (UI/ml)	N/A	0	2650	301
IgE (UI/ml)	N/A	8950	0	2,320
ANCA	N/A	Neg	Neg	Neg

ESR: erythrocyte sedimentation rate, CRP: C reactive protein – normal <0.5, IgE: total immunoglobulin E, N/A: not available.



**Figure 1** High resolution computer tomography of patient 1 showing a parenchymal infiltrate in the lingula and left inferior lobe as well as peribronchovascular interstitial thickening.

and colonic mucosal biopsies. Biopsies of the colonic mucosa showed aspects of active eosinophilic colitis (Fig. 2) and skin biopsies revealed aspects of eosinophilic vasculitis in two patients and typical aspects of the Churg–Strauss granuloma in another.

**Treatment.** All patients received treatment with high doses of systemic steroids ( $\geq 1$  mg/kg/day of prednisolone or equivalent).

An immediate and relevant response to the treatment was seen in all patients, with improvement in all but the neurological complaints within two to four days.

Troublesome neurological symptoms required the addition of another drug in three patients, namely cyclophosphamide in one case, gabapentine in another and gabapentine and cyclophosphamide, followed by gabapentine and human immunoglobulin in another.

**Follow-up.** None of the patients died while in hospital. Three were free of symptoms when discharged from hospital, 12–46 days after admission. The other patient continued to suffer from serious neurological complaints (upper limb paresthesia with loss of function).

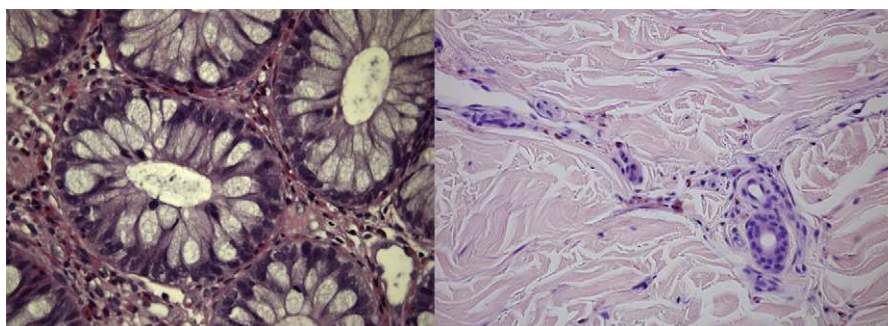
One of the patients disappeared from follow-up after 3 years. Another died two weeks after discharge, at home, probably due to worsening severe chronic heart failure secondary to dilated cardiomyopathy which had been present before diagnosis of CSS. The other two patients are still in follow-up; one of them (patient 3) still suffers from asthma and intense upper member paresthesia which only improved after 6 cycles of endovenous human immunoglobulin. The other patient (patient 2) only suffers from asthma.

**Relapses.** Only one relapse was recorded, in patient 1, three years after diagnosis, characterized by complaints of polyarthralgias and cutaneous lesions, and leukocytosis with eosinophilia, which all responded well to treatment with prednisolone and cyclophosphamide.

## Discussion

The demographic and clinical characteristics of our patients are similar to those in previously published series.<sup>45–47</sup>

The fact that two of the patients were taking LTRAs before the diagnosis of CSS is not particularly relevant, since these drugs are frequently prescribed to patients suffering



**Figure 2** Colonic (left) and skin (right) biopsies showing a dense infiltrate of eosinophils both in the colon mucosa and in the walls of skin vessels (HE 400 $\times$ ).

from atopic asthma, as they are to patients with CSS. A detailed discussion of the association between LTRAs and CSS is beyond the scope of this article and can be found elsewhere.<sup>9</sup>

It is important however to underline the high rate of neurological involvement in our patients, although only one presented the classical finding of mononeuritis multiplex. Radiculopathy has already been described in a patient with CSS, but seems to be a rare finding.<sup>48</sup>

It is interesting that none of blood tests of the three patients were positive for ANCA, unlike in most published series. This is probably due to the small number of patients in our case series.

The difficulty in treatment of neurological complications is also relevant, although this has also been discussed in other series. The good results obtained with the use of immunoglobulin, after failure of steroids, gabapentine and cyclophosphamide have been previously described.<sup>49</sup>

Although extensive follow-up information was only available for two patients, the absence of mortality during hospital admission is consistent with the good prognosis reported in the literature for CSS, where there is timely and correct diagnosis and therapy. Although one patient died 2 weeks after discharge, this was probably due to his existing heart condition.

In conclusion, CSS is a rare but easily diagnosed disease if there is a high level of clinical suspicion. It is important that all clinicians dealing with patients with asthma or vasculitis are aware of the clinical imaging and laboratory characteristics of this disease, as timely and appropriate treatment has significant impact on both quality of life and survival.

## Conflicts of interest

The authors have no conflicts of interest to declare.

## References

- Churg J, Strauss L. Allergic granulomatosis, allergic angiitis, and periarteritis nodosa. *Am J Pathol.* 1951;27:277–301.
- Masi AT, Hunder GG, Lie JT, Michel BA, Bloch DA, Arend WP, et al. The American College of Rheumatology 1990 criteria for the classification of Churg–Strauss syndrome (allergic granulomatosis and angiitis). *Arthritis Rheum.* 1990;33:1094–100.
- Watts RA, Lane SE, Bentham G, Scott DG. Epidemiology of systemic vasculitis: a ten-year study in the United Kingdom. *Arthritis Rheum.* 2000;43:414–9.
- Mahr A, Guillevin L, Poissonnet M, Ayme S. Prevalences of polyarteritis nodosa, microscopic polyangiitis, Wegener's granulomatosis, and Churg–Strauss syndrome in a French urban multiethnic population in 2000: a capture–recapture estimate. *Arthritis Rheum.* 2004;51:92–9.
- Sinico RA, Bottero P. Churg–Strauss angiitis. *Best Pract Res Clin Rheumatol.* 2009;23:355–66.
- Guillevin L, Jarrousse B, Lok C, Lhote F, Jais JP, Le Thi Huong Du D, et al. Longterm followup after treatment of polyarteritis nodosa and Churg–Strauss angiitis with comparison of steroids, plasma exchange and cyclophosphamide to steroids and plasma exchange. A prospective randomized trial of 71 patients. The Cooperative Study Group for Polyarteritis Nodosa. *J Rheumatol.* 1991;18:567–74.
- Grau RG. Churg–Strauss syndrome: 2005–2008 update. *Curr Rheumatol Rep.* 2008;10:453–8.
- Bibby S, Healy B, Steele R, Kumareswaran K, Nelson H, Beasley R. Association between leukotriene receptor antagonist therapy and Churg–Strauss syndrome: an analysis of the FDA AERS database. *Thorax.* 2010;65:132–8.
- Nathani N, Little MA, Kunst H, Wilson D, Thickett DR. Churg–Strauss syndrome and leukotriene antagonist use: a respiratory perspective. *Thorax.* 2008;63:883–8.
- Bili A, Condemi JJ, Bottone SM, Ryan CK. Seven cases of complete and incomplete forms of Churg–Strauss syndrome not related to leukotriene receptor antagonists. *J Allergy Clin Immunol.* 1999;104:1060–5.
- Wechsler ME, Wong DA, Miller MK, Lawrence-Miyasaki L. Churg–Strauss syndrome in patients treated with omalizumab. *Chest.* 2009;136:507–18.
- Hauser T, Mahr A, Metzler C, Coste J, Sommerstein R, Gross WL, et al. The leukotriene receptor antagonist montelukast and the risk of Churg–Strauss syndrome: a case-crossover study. *Thorax.* 2008;63:677–82.
- Schnabel A, Csernok E, Braun J, Gross WL. Inflammatory cells and cellular activation in the lower respiratory tract in Churg–Strauss syndrome. *Thorax.* 1999;54:771–8.
- Tsukadaira A, Okubo Y, Kitano K, Horie S, Momose T, Takashi S, et al. Eosinophil active cytokines and surface analysis of eosinophils in Churg–Strauss syndrome. *Allergy Asthma Proc.* 1999;20:39–44.
- Peen E, Hahn P, Lauwers G, Williams Jr RC, Gleich G, Kephart GM. Churg–Strauss syndrome: localization of eosinophil major basic protein in damaged tissues. *Arthritis Rheum.* 2000;43:1897–900.
- Hellmich B, Csernok E, Gross WL. Proinflammatory cytokines and autoimmunity in Churg–Strauss syndrome. *Ann N Y Acad Sci.* 2005;1051:121–31.
- Moosig F, Butherus K, Hellmich B, Gross WL. Mepolizumab, a humanized anti-IL5 antibody. Has steroid-sparing potential in Churg–Strauss syndrome. *Arthritis Rheum.* 2010;62 Suppl. 10:2203.
- Kiene M, Csernok E, Muller A, Metzler C, Trabandt A, Gross WL. Elevated interleukin-4 and interleukin-13 production by T cell lines from patients with Churg–Strauss syndrome. *Arthritis Rheum.* 2001;44:469–73.
- Tsurikisawa N, Saito H, Tsuburai T, Oshikata C, Ono E, Mitomi H, et al. Differences in regulatory T cells between Churg–Strauss syndrome and chronic eosinophilic pneumonia with asthma. *J Allergy Clin Immunol.* 2008;122:610–6.
- Saito H, Tsurikisawa N, Tsuburai T, Oshikata C, Akiyama K. Cytokine production profile of CD4+ T cells from patients with active Churg–Strauss syndrome tends toward Th17. *Int Arch Allergy Immunol.* 2009;149 Suppl. 1:61–5.
- Falk RJ, Terrell RS, Charles LA, Jennette JC. Antineutrophil cytoplasmic autoantibodies induce neutrophils to degranulate and produce oxygen radicals in vitro. *Proc Natl Acad Sci USA.* 1990;87:4115–9.
- Lanham JG, Elkon KB, Pusey CD, Hughes GR. Systemic vasculitis with asthma and eosinophilia: a clinical approach to the Churg–Strauss syndrome. *Medicine (Baltimore).* 1984;63:65–81.
- Finsterer J. Neurological manifestations of Churg–Strauss syndrome. *Eur J Neurol.* 2010;17:524–5.
- April A, Calamia KT, Cohen MD. The Churg–Strauss syndrome (allergic granulomatous angiitis): review and update. *Semin Arthritis Rheum.* 2003;33:106–14.
- Dennert RM, van Paassen P, Schalla S, Kuznetsova T, Alzand BS, Staessen JA, et al. Cardiac involvement in Churg–Strauss syndrome. *Arthritis Rheum.* 2010;62:627–34.
- Frankel SK, Cosgrove GP, Fischer A, Meehan RT, Brown KK. Update in the diagnosis and management of pulmonary vasculitis. *Chest.* 2006;129:452–65.

27. Kim YK, Lee KS, Chung MP, Han J, Chong S, Chung MJ, et al. Pulmonary involvement in Churg–Strauss syndrome: an analysis of CT, clinical, and pathologic findings. *Eur Radiol*. 2007;17:3157–65.
28. Alberts WM. Pulmonary manifestations of the Churg–Strauss syndrome and related idiopathic small vessel vasculitis syndromes. *Curr Opin Pulm Med*. 2007;13:445–50.
29. Pagnoux C, Guillevin L. Churg–Strauss syndrome: evidence for disease subtypes? *Curr Opin Rheumatol*. 2010;22:21–8.
30. Geraldes L, Todo-Bom A, Loureiro C. Airways inflammation evaluation. Upper and lower airways. *Rev Port Pneumol*. 2009;15:443–60.
31. Guerra M, Miranda JA, Leal F, Vouga L. Interstitial lung disease: diagnostic accuracy and safety of surgical lung biopsy. *Rev Port Pneumol*. 2009;15:433–24.
32. Melo N, Figueiredo S, Morais A, Moura CS, Pinho P, Bastos P, et al. Open lung biopsy in patients on mechanical ventilation with suspected diffuse lung disease. *Rev Port Pneumol*. 2009;15:1211–8.
33. Churg A. Recent advances in the diagnosis of Churg–Strauss syndrome. *Mod Pathol*. 2001;14:1284–93.
34. Valente C, Andre S, Catarino A, Loureiro M, Fontes Baganha M. Idiopathic chronic eosinophilic pneumonia—a clinical case report. *Rev Port Pneumol*. 2008;14:551–9.
35. Bento A, Arrobas AM. Asthma and its differential diagnoses. *Rev Port Pneumol*. 2009;15:1185–91.
36. Mukhtyar C, Guillevin L, Cid MC, Dasgupta B, de Groot K, Gross W, et al. EULAR recommendations for the management of primary small and medium vessel vasculitis. *Ann Rheum Dis*. 2009;68:310–7.
37. Cohen P, Pagnoux C, Mahr A, Arene JP, Mouthon L, Le Guern V, et al. Churg–Strauss syndrome with poor-prognosis factors: a prospective multicenter trial comparing glucocorticoids and six or twelve cyclophosphamide pulses in forty-eight patients. *Arthritis Rheum*. 2007;57:686–93.
38. Taniguchi M, Tsurikisawa N, Higashi N, Saito H, Mita H, Mori A, et al. Treatment for Churg–Strauss syndrome: induction of remission and efficacy of intravenous immunoglobulin therapy. *Allergol Int*. 2007;56:97–103.
39. Pepper RJ, Fabre MA, Pavesio C, Gaskin G, Jones RB, Jayne D, et al. Rituximab is effective in the treatment of refractory Churg–Strauss syndrome and is associated with diminished T-cell interleukin-5 production. *Rheumatology (Oxford)*. 2008;47:1104–5.
40. Metzler C, Schnabel A, Gross WL, Hellmich B. A phase II study of interferon-alpha for the treatment of refractory Churg–Strauss syndrome. *Clin Exp Rheumatol*. 2008;26(3 Suppl. 49): S35–40.
41. Metzler C, Csernok E, Gross WL, Hellmich B. Interferon-alpha for maintenance of remission in Churg–Strauss syndrome: a long-term observational study. *Clin Exp Rheumatol*. 2010;28(1 Suppl. 57):24–30.
42. Kim S, Marigowda G, Oren E, Israel E, Wechsler ME. Mepolizumab as a steroid-sparing treatment option in patients with Churg–Strauss syndrome. *J Allergy Clin Immunol*. 2010;125:1336–43.
43. Ribí C, Cohen P, Pagnoux C, Mahr A, Arene JP, Lauque D, et al. Treatment of Churg–Strauss syndrome without poor-prognosis factors: a multicenter, prospective, randomized, open-label study of seventy-two patients. *Arthritis Rheum*. 2008;58:586–94.
44. Guillevin L, Lhote F, Gayraud M, Cohen P, Jarrousse B, Lortholary O, et al. Prognostic factors in polyarteritis nodosa and Churg–Strauss syndrome. A prospective study in 342 patients. *Medicine (Baltimore)*. 1996;75:17–28.
45. Keogh KA, Specks U. Churg–Strauss syndrome: clinical presentation, antineutrophil cytoplasmic antibodies, and leukotriene receptor antagonists. *Am J Med*. 2003;115:284–90.
46. Sinico RA, Di Toma L, Maggiore U, Bottero P, Radice A, Tosoni C, et al. Prevalence and clinical significance of antineutrophil cytoplasmic antibodies in Churg–Strauss syndrome. *Arthritis Rheum*. 2005;52:2926–35.
47. Sable-Fourtassou R, Cohen P, Mahr A, Pagnoux C, Mouthon L, Jayne D, et al. Antineutrophil cytoplasmic antibodies and the Churg–Strauss syndrome. *Ann Intern Med*. 2005;143:632–8.
48. Sehgal M, Swanson JW, DeRemee RA, Colby TV. Neurologic manifestations of Churg–Strauss syndrome. *Mayo Clin Proc*. 1995;70:337–41.
49. Levy Y, Uziel Y, Zandman GG, Amital H, Sherer Y, Langevitz P, et al. Intravenous immunoglobulins in peripheral neuropathy associated with vasculitis. *Ann Rheum Dis*. 2003;62:1221–3.