



ORIGINAL ARTICLE

Host factors associated to false negative and indeterminate results in an interferon- γ release assay in patients with active tuberculosis



J.A. Santos^{a,b,*}, R. Duarte^{c,d}, C. Nunes^a

^a NOVA National School of Public Health, Public Health Research Centre, Universidade NOVA de Lisboa, Portugal Avenida Padre Cruz, 1600-560 Lisboa, Portugal

^b National Health Institute Dr. Ricardo Jorge, Portugal Avenida Padre Cruz, 1600-560 Lisboa, Portugal

^c Chest Disease Center, Vila Nova de Gaia, Portugal Rua Conselheiro Veloso da Cruz, 4400-092 Vila Nova de Gaia, Portugal

^d Faculdade de Medicina da Universidade do Porto, Portugal Alameda Prof. Hernâni Monteiro, 4200-319 Porto, Portugal

Received 19 September 2019; accepted 11 November 2019

Available online 13 December 2019

KEYWORDS

Tuberculosis;
Interferon-gamma
release tests;
Tuberculin test;
Public health;
Latent tuberculosis;
Preventive medicine

Abstract

Introduction: Information on host factors that contribute to false negative and indeterminate results in interferon- γ release assays (IGRA) are critical to improve the usefulness of these tests in the fight against tuberculosis (TB) epidemics.

The aim of this study was to estimate and compare the sensitivity of an IGRA and the tuberculin skin test (TST), independently and as a combined approach, in patients with TB and to identify risk factors associated with false negative and indeterminate IGRA results.

Methods: Retrospective cohort study of all active TB notifications with an IGRA result ($n = 1230$), from 2008 to 2015. 68.0 % ($n = 727$) of these patients had a TST result interpreted using a 5 mm (TST-5 mm) and 10 mm (TST-10 mm) cutoff. Sensitivity was determined for both tests.

Logistic regression analysis was used to evaluate the association of sociodemographic and clinical factors to the risk of false negative or indeterminate IGRA results.

Results: IGRA, TST-5 mm and TST-10 mm were positive in 82.4 %, 84.5 % and 78.4 % of the patients that performed both tests. When used combined, IGRA/TST-5 mm sensitivity was 91.7 % and IGRA/TST-10 mm sensitivity was 90.6 %. Age ≥ 65 years, alcohol abuse and pulmonary TB were predictive factors for indeterminate results. Inflammatory diseases and pulmonary TB were statistically associated with false negative IGRA results.

* Corresponding author at: Epidemiology and Statistics Department, Escola Nacional de Saúde Pública, Universidade NOVA de Lisboa, Avenida Padre Cruz, 1600-560 Lisboa, Portugal.

E-mail addresses: jpa.santos@outlook.pt (J.A. Santos), raquelafduarte@gmail.com (R. Duarte), cnunes@ensp.unl.pt (C. Nunes).

Conclusion: Inflammatory diseases and pulmonary TB were identified as factors for false negative IGRA results. Our results indicate that the use of both tests in a combined approach, especially in specific risk groups of the population, could increase the sensitivity of the screening process and accelerate the achievement of the WHO End TB Strategy goals.

© 2019 Sociedade Portuguesa de Pneumologia. Published by Elsevier España, S.L.U. This is an open access article under the CC BY-NC-ND license (<http://creativecommons.org/licenses/by-nc-nd/4.0/>).

Introduction

The timely identification of latent tuberculosis infection (LTBI) cases and implementation of preventive treatment can substantially decrease the risk of people developing tuberculosis (TB) disease from a latent infection and, consequently, reduce TB-related morbidity and mortality, reduce transmission, and the burden of the disease.¹

The existing screening tests are indirect methods that only provide immunological evidence of host sensitization to *Mycobacterium tuberculosis* antigens, do not differentiate accurately between LTBI and active TB or provide evidence regarding the stage and potential progression from infection to disease.²

WHO guidelines recommend the use of the tuberculin skin test (TST) and the interferon- γ release assays (IGRA) as screening tests.

IGRAs measure T-cell release of interferon- γ in response to stimulation by two strongly immunogenic but highly specific *M. tuberculosis* complex antigens (ESAT-6 and CFP-10). Two IGRAs are commercially available, QuantiFERON-TB Gold assay (Qiagen) and the T-SPOT.TB assay (Oxford Immunotec), both detecting the release of interferon- γ in response to the specific *M. tuberculosis* antigens through different methods.

IGRAs have higher specificity for *M. tuberculosis* than the TST, as the antigens used are not encoded in the genomes of any of the BCG vaccine strains or most species of non-tuberculous mycobacteria.³ Furthermore, these tests have logistic advantages when compared to TST (e.g. require only one visit), have positive and negative controls (e.g. identification of potential cases of anergy), and no boost effect when repeated.²

However, these assays are more expensive and require laboratory infrastructure. Also, T-cell assays such as IGRA are susceptible to variability by different factors at multiple levels, including assay manufacturing, preanalytical processing (e.g. blood volume, sample transport temperature, incubation time) or analytical testing.³

IGRAs have shown reduced sensitivity in immunocompromised patients, especially in those with a severe immune depression, such as patients with diabetes⁴ or HIV infection.⁵ IGRAs have also presented a lower sensitivity in young (<5 years of age) or immunocompromised children.^{6,7}

Another drawback of IGRA testing is the occurrence of indeterminate results, which may result from an insufficient immune response to the positive control or a high level of response in the negative control,⁸ with previous studies presenting rates of indeterminate IGRA results ranging between 2% and 11%.⁸

In order to improve the usefulness of the IGRAs as a diagnostic aid for detection of LTBI, it is essential to better understand which factors are associated with false negative and indeterminate IGRA results.

Since there is no diagnostic gold standard for LTBI to help evaluate the IGRAs, sensitivity can be estimated using surrogate reference standards such as IGRA results from patients with a definitive TB diagnosis and, through collected epidemiological data, determine factors that may be associated with false negative results.

The objective of this study was to analyse the performance of an IGRA test in patients with active TB. The specific objectives were to: (i) determine and compare the sensitivity of IGRA and TST tests; (ii) search for risk factors that could be linked with indeterminate IGRA results; and (iii) ascertain risk factors that could be associated with false negative IGRA results.

Material and methods

Study design and data source

Retrospective cohort study centered on data from active TB cases notified in the Portuguese National Tuberculosis Surveillance System (SVIG-TB), from 2008 to 2015. This official database is generated by direct compulsory reporting by health care providers and the data from this official system of notification is complemented and updated during TB cases follow-up. Patients notified in the database are diagnosed based on laboratory confirmed TB (through identification of *M. tuberculosis* by microscopy, cultural and/or molecular methods) and/or based on clinical and radiological findings and a favorable TB treatment response.

For this study ethics committee approval or informed consent was not required, as all patient's information retrieved from the SVIG-TB database was fully anonymized.

Study data

The study included all patients notified in the SVIG-TB database with an IGRA test result. The IGRA test used in the patients enrolled in the study was the QuantiFERON-TB Gold In-Tube (Qiagen).

The clinical and sociodemographic variables analyzed were sex, age group, comorbidities (chronic renal failure in dialysis, oncologic diseases, inflammatory diseases, HIV infection, chronic obstructive pulmonary disease [COPD] and diabetes), substance abuse (alcohol and drug abuse) and site of disease (pulmonary or extrapulmonary TB). IGRA and

TST results were the dependent variable (event: negative results).

Indeterminate IGRA results were assessed by dividing the results into determinate (positive and negative results) and indeterminate (event).

Statistical analysis

TST induration measurements were interpreted using two cutoff points, ≥ 5 mm (TST-5 mm) and ≥ 10 mm (TST-10 mm),⁹ and converted to positive or negative results.

Results from patients that underwent both diagnostic tests were used to calculate the sensitivity with 95 % confidence interval for each test separately and in combination (IGRA/TST-5 mm or IGRA/TST-10 mm). Sensitivity outcomes were compared using McNemar's test.¹⁰

Bivariate and multivariate logistic regression analysis¹⁰ was used to determine the variables that were significantly associated with the occurrence of indeterminate and false negative IGRA results. Multivariate logistic regression analysis with forward stepwise (Likelihood Ratio) method, logit function (entry-0.05; removal-0.10), included variables that were significant in bivariate analyses. Odds ratio were reported with 95 % confidence intervals (95 %CI). Statistical analyses were performed using IBM® SPSS® Statistics for Windows, version 23 (IBM Corp., N.Y., USA).

Results

There were 1230 patients notified with active TB in the SVIG-TB database (2008–2015) with an IGRA test, 857 patients (69.7 %) had a positive test result, 212 (17.2 %) had a negative result and 161 (13.1 %) had an indeterminate result. Among the 1069 patients with a determinate IGRA result, 727 (68.0 %) also had a TST result.

The mean (\pm standard deviation) age of the patients with a determinate IGRA result ($n=1069$, 86.9 %) was 47.9 (± 20.0), ranging from less than 1 to 91 years. Portugal was the main country of origin ($n=931$; 87.1 %), followed by Angola ($n=31$, 2.9 %), Cabo Verde ($n=23$, 2.2 %), Guinea-Bissau ($n=19$, 1.8 %) and Mozambique ($n=12$, 1.1 %).

Diabetes mellitus was the most common comorbidity and chronic renal failure was the least frequent.

IGRA and TST sensitivity

Considering the patients who performed IGRA and TST assays ($n=727$), overall sensitivity was 82.4 %, 84.6 % and 78.4 % for IGRA, TST-5 mm and TST-10 mm, correspondingly. These results indicate that 128 (17.6 %), 112 (15.4 %) and 157 (21.6 %) patients with a diagnosis of active TB had a false negative result with IGRA, TST-5 mm and TST-10 mm tests, respectively. Table 1 presents the sensitivity results for IGRA and TST for total of patients and stratified by sociodemographic and clinical variables.

Comparing the sensitivity of the tests separately with the combined sensitivity of IGRA/TST-5 mm and IGRA/TST-10 mm (91.7 % and 90.6 %, respectively), the latter was consistently higher and this difference was statistically significant ($p < 0.001$) – Fig. 1.

Risk factors for IGRA indeterminate results

Of the 161 patients with an indeterminate result, the majority were male (67.7 %) with a mean age of 56.0 (± 19.4) that ranged from 5 to 92 years, and more than half were ≥ 50 years old (57.1 %).

The proportion of indeterminate results increases as the age increases, with patients over 80 years old presenting the highest proportion of indeterminate results (34.5 %) and patients under 20 years old presenting the lowest proportion of indeterminate results (2.9 %).

Being older than 70 years, alcohol abuse and pulmonary TB were independent predictive factors with a statistically significant association to higher probability of indeterminate IGRA results in TB patients (Table 2).

Risk factors for IGRA false negative results

Among the risk factors analyzed through logistic regression (Table 3), two presented a statistically significant association with an increased risk of obtaining false negative IGRA results - inflammatory diseases and pulmonary TB.

Discussion

The objective of this study was to analyse the performance of an IGRA test in patients with active TB which involved establishing and comparing the sensitivity of IGRA and TST tests.

IGRA sensitivity results are heterogeneous across the literature, ranging from 60 %¹¹ to nearly 100 %¹² with most studies presenting an sensitivity above 70 %, as demonstrated by three different meta-analyses that obtained a pooled sensitivity of 81.0 %, 80.0 %¹⁴ and 84.2 %.¹⁵ In our study, IGRA overall sensitivity (82.4 %) was close to the pooled sensitivity of these meta-analyses. Nonetheless, 17.6 % of the results were false negative, demonstrating that although these tests can facilitate diagnostic decisions, negative results should not be used alone to exclude an *M. tuberculosis* infection but interpreted in conjunction with other clinical findings and diagnoses.

Our TST sensitivity was higher than the pooled sensitivity obtained in three different meta-analysis - 66 %, 70 %¹³ and 77 %¹⁶ - but comparable to a US TB surveillance study that included almost 65 000 culture-confirmed TB patients, in which 84.2 % of the patients had a TST ≥ 5 mm and 81.6 % a TST ≥ 10 mm.¹⁷ Despite the differences in sensitivity obtained between IGRA and TST-5 mm or TST-10 mm, only the difference between IGRA and TST-10 mm was statistically significant ($p=0.021$), which indicates that IGRA and TST-5 mm had an similar performance in the identification of cases of infection and presented a better performance than TST-10 mm.

By combining the results of the two tests, the sensitivity increased to more than 90.0 %, and the difference between these results and those obtained by the tests separately was statistically significant ($p < 0.001$). Choi et al. presented similar sensitivity results, obtaining 85.3 % (TST), 70.3 % (IGRA) and 93.3 % (IGRA/TST).⁴ This increase in sensitivity suggests that the combined use of the two tests could promote the identification of more cases of infection than if used sepa-

Table 1 IGRA and TST sensitivity (5 mm and 10 mm cut-offs) according to sex, age group, comorbidities (chronic renal failure, oncologic disease, inflammatory disease, HIV, diabetes and COPD), substance abuse (alcohol or drug abuse) and site of disease (pulmonary or extrapulmonary) in patients submitted to both assays (n = 727).

	Variables	Patients n/N (%)	IGRA		TST - 5 mm		TST - 10 mm	
			Positive (n)	Sensitivity % (IC 95%)	Positive (n)	Sensitivity % (IC 95%)	Positive (n)	Sensitivity % (IC 95%)
Total		727	599	82.4 (79.5–84.9)	615	84.6 (82.0–87.2)	570	78.4 (75.4–81.4)
Sex	Male	362/727 (49.8)	304	84.0 (79.9–87.4)	311	85.2 (81.6–88.8)	292	91.2 (88.3–94.1)
	Female	365/727 (50.2)	295	80.8 (76.5–84.5)	304	84.0 (80.2–87.8)	278	92.3 (89.5–95.0)
Age group	≤15	48/727 (6.6)	37	77.1 (63.5–86.7)	35	72.9 (60.3–85.5)	31	85.4 (75.4–95.4)
	16 – 64	523/727 (71.9)	431	82.4 (78.9–85.4)	458	87.6 (84.7–90.4)	423	92.5 (90.3–95.0)
	≥ 65	156/727 (21.5)	131	84.0 (77.4–88.9)	122	78.2 (71.7–84.7)	116	91.0 (86.5–95.5)
Comorbidities	Chronic renal failure	5/727 (0.7)	4	80.0 (37.6–96.4)	3	60.0 (14.7–94.7)	3	80.0 (28.4–99.5)
	Oncologic diseases	36/727 (5.0)	23	63.9 (47.6–77.5)	23	63.9 (48.2–79.6)	20	72.2 (57.6–86.9)
	Inflammatory diseases	32/727 (4.4)	20	62.5 (45.3–77.1)	24	75.0 (60.0–90.0)	21	75.0 (60.0–90.0)
	HIV infection	25/632 (3.4)	18	72.0 (52.4–85.7)	16	64.0 (44.5–79.8)	15	76.0 (56.6–88.5)
	Diabetes	41/727 (5.6)	32	78.0 (63.3–88.0)	31	75.6 (62.5–88.8)	27	80.5 (68.4–92.6)
	COPD	16/727 (2.2)	15	93.8 (71.7–98.9)	16	100 (79.4–100)	15	100 (79.4–100)
Substance abuse	Alcohol abuse	31/706 (4.3)	28	90.3 (75.1–96.7)	27	87.1 (75.3–98.9)	25	93.5 (78.6–99.2)
	Drug abuse	32/709 (4.4)	27	84.4 (68.3–93.1)	31	96.9 (83.8–99.9)	31	100 (89.1–100)
Site of disease	PTB	343/727 (47.2)	275	80.2 (75.6–84.1)	292	85.1 (81.4–88.9)	270	91.5 (88.6–94.5)
	ETB	384/727 (52.8)	324	84.4 (80.4–87.7)	323	84.1 (80.5–87.8)	300	91.9 (89.2–94.7)

PTB = Pulmonary tuberculosis; ETB = Extrapulmonary tuberculosis.

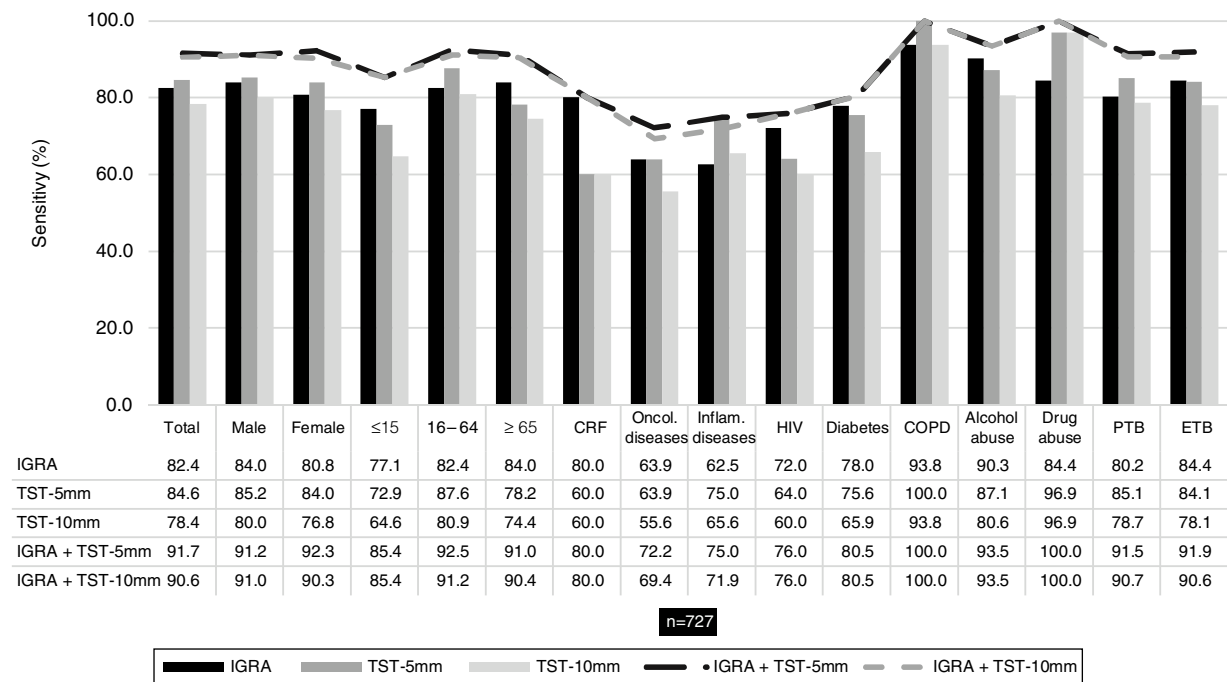


Figure 1 Sensitivity of IGRA and TST when used separately and when used together (IGRA/TST-5 mm and IGRA/TST-10 mm) in patients with both test results ($n = 727$). Sensitivity was assessed according to sex, age group (≤ 15 , 16–64, ≥ 65 years), comorbidities (chronic renal failure [CRF], oncologic disease, inflammatory disease, HIV infection, diabetes and COPD), substance abuse (alcohol or drug abuse) and site of disease (pulmonary TB [PTB] or extrapulmonary TB [ETB]).

rately and in substitution of one another. The combined use could enhance the detection of LTBI cases among vulnerable populations,¹⁸ such as homeless people, drug or alcohol abusers, prisoners and people living with HIV. This approach could be especially helpful in low-incidence countries, as the majority of TB cases occur due to the progression from LTBI to TB disease.¹⁹ Furthermore, these vulnerable populations are frequently associated with individual and contextual factors, as presented by Zão et al.²⁰ that contribute to patient and healthcare system delay in the diagnosis and treatment of TB. A false negative result could contribute to longer delays, thus perpetuating the spread of the disease.

Indeterminate results represent a considerable problem for clinical management, since they imply the lack of clear information about the patient's TB infection status.

Unlike other studies,^{21,22} our results do not show old age as a risk factor for false negative IGRA results. However, we observed that older age was a predictive factor for indeterminate results, which was consistent with the findings of other studies.^{21,23} Several studies analyzed the association between age and indeterminate IGRA results and concluded that indeterminate results are significantly more common in children^{23–25} and adolescents²³ and in the elderly.^{23,26} Our results confirm part of their conclusions, with patients aged >80 years being seven times more likely to have an indeterminate IGRA result. In addition, when we stratified patients in ten-year age groups, we observed that the proportion of indeterminate results increased as the age increases, with patients over 80 years old presenting the highest proportion of indeterminate results, results shared with Kobashi et al.²⁶ In our study younger patients did not present any association with false negative or indeterminate IGRA results.

Our study also found an association between alcohol abuse and indeterminate IGRA results in which patients with an alcohol problem were four times more likely to have an indeterminate outcome. Both acute and chronic alcohol use have profound regulatory effects on the immune system,²⁷ which possibly impairs the patient's ability to respond correctly to the IGRA, resulting in an indeterminate result. Because alcohol dependence was based on self-report and daily alcohol intake was not determined, further studies with a more detailed information on alcohol consumption are needed to better understand this potential association.

From the studies available involving IGRA, PTB patients and ETB patients, the test sensitivity remains similar in both forms of TB, as shown by Di et al.²⁸ (89.7 % vs 79.7 %), Ji et al.²⁹ (89.7 % vs 87.6 %), Azghay et al.³⁰ (78.9 % vs 87.8 %) and in our study (80.2 % vs 84.4 %). However, pulmonary TB was presented as a predictive factor for indeterminate and false negative results, in which these patients were almost three times more likely to have an indeterminate outcome and nearly twice as likely to have a false negative result compared to extrapulmonary TB (ETB) patients.

Clinical manifestations of ETB may vary from an acute or disseminated disease, such as meningitis or miliary TB, to a chronic localized infection with an insidious onset and slow progression, such as lymph node or osteoarticular TB.^{31,32} In two analyses of risk factors of false-negative IGRA results, only meningitis TB from the eight forms of ETB in one study and 6 forms in the other was significantly associated with false negative results, an acute clinical manifestation.^{28,33} Thus, the fact that most ETB manifestations have a slower progression to severe disease, possibly allows patients to maintain a functional immune system and consequently

Table 2 Sociodemographic and clinical characteristics of 161 patients with indeterminate IGRA results and their association with the occurrence of the indeterminate test results in patients with active TB.

	Variables (reference class) n (%)	Indeterminate IGRA OR (95 %CI)	Crude Odds Ratio		Adjusted Odds ratio (by sex and age)		Final Model (FR)	
			<i>p</i>	OR (95 %CI)	<i>p</i>	OR (95 %CI)	<i>P</i>	
Sex (Female)	Male	109 (67.7)	1.94 (1.37–2.76)	<0.001	1.95 (1.37–2.8)	<0.001		
Age group (41–50)	<10	1 (0.6)	0.23 (0.03–1.75)	0.155	0.23 (0.03–1.79)	0.161		
	11-20	2 (1.2)	0.24 (0.06–1.05)	0.059	0.23 (0.05–1.01)	0.061		
	21-30	12 (7.5)	0.83 (0.40–1.71)	0.616	0.88 (0.43–1.82)	0.735		
	31-40	28 (17.4)	1.36 (0.77–2.40)	0.296	1.41 (0.79–2.49)	0.246		
	51-60	26 (16.1)	1.10 (0.59–2.03)	0.753	1.11 (0.60–2.05)	0.741		
	61-70	21 (13.0)	1.26 (0.63–2.12)	0.639	1.23 (0.67–2.26)	0.508		
	71 - 80	30 (18.6)	1.79 (1.01–3.15)	0.045	1.83 (1.03–3.24)	0.039	2.52 (1.16–5.48)	0.020
	> 80	19 (11.8)	4.24 (2.13–8.45)	<0.001	4.21 (2.1–8.44)	<0.001	7.22 (2.83–18.4)	<0.001
Comorbidities (No)	Chronic renal failure	1 (0.6)	0.51 (0.07–3.91)	0.515	0.34 (0.04–2.76)	0.313		
	Oncologic diseases	13 (8.1)	1.45 (0.78–2.71)	0.241	1.06 (0.55–2.03)	0.873		
	Inflammatory diseases	5 (3.1)	0.67 (0.26–1.70)	0.397	0.63 (0.24–1.64)	0.340		
	HIV infection	14 (8.7)	1.79 (0.97–3.33)	0.061	1.76 (0.91–3.4)	0.092		
	Diabetes	16 (9.9)	1.79 (1.01–3.19)	0.047	1.59 (0.87–2.95)	0.134		
	COPD	9 (5.6)	2.69 (1.22–5.93)	0.014	1.81 (0.79–4.15)	0.159		
Substance abuse (No)	Alcohol abuse	27 (16.8)	4.15 (2.52–6.83)	<0.001	4.07 (2.36–7.01)	<0.001	4.17 (2.23–7.81)	<0.001
	Drug abuse	15 (9.3)	2.52 (1.37–4.64)	0.003	2.75 (1.41–5.35)	0.003		
Site of disease (ETB)	PTB	116 (72.0)/45 (28.0)	3.15 (2.19–4.54)	<0.001	3.544 (2.43–5.18)	<0.001	2.85 (1.79–4.53)	<0.001

OR = Odds ratio; CI = confidence interval; PTB = Pulmonary tuberculosis; ETB = Extrapulmonary tuberculosis. FR - Forward stepwise (LR).

Table 3 Association between false negative IGRA results and sociodemographic and clinical variables among patients with notified TB (n = 1069).

	Variables (reference class) n/N (%)	Patients OR (95 %CI)	Crude Odds Ratio		Adjusted Odds ratio (by sex and age)		Final Model (FR)	
			<i>p</i>	OR (95 %CI)	<i>p</i>	OR (95 %CI)	<i>p</i>	
Sex (Female)	Male	555/1069 (51.9)	0.87 (0.64–1.17)	0.352	0.86 (0.63–1.16)	0.325		
Age	<10	35/1069 (3.3)	1.34 (0.60–2.99)	0.472	1.34 (0.60–2.98)	0.476		
group (41–50)	11-20	66/1069 (6.2)	0.75 (0.37–1.51)	0.413	0.75 (0.37–1.52)	0.428		
	21-30	116/1069 (10.9)	0.97 (0.56–1.67)	0.909	0.96 (0.55–1.65)	0.872		
	31-40	166/1069 (15.5)	0.83 (0.51–1.37)	0.471	0.82 (0.49–1.36)	0.445		
	51-60	209/1069 (19.6)	0.62 (0.36–1.07)	0.088	0.62 (0.36–1.07)	0.084		
	61-70	153/1069 (14.3)	0.66 (0.38–1.12)	0.122	0.65 (0.38–1.11)	0.111		
	71 - 80	153/1069 (14.3)	0.84 (0.49–1.43)	0.516	0.83 (0.49–1.41)	0.493		
	> 80	135/1069 (12.6)	0.81 (0.33–1.96)	0.64	0.82 (0.34–1.99)	0.66		
Comorbidities (No)	Chronic renal failure	13/1069 (1.2)	0.73 (0.16–3.33)	0.687	0.85 (0.18–3.92)	0.835		
	Oncologic diseases	61/1069 (5.7)	1.611 (0.90–2.88)	0.108	1.64 (0.90–2.97)	0.105		
	Inflammatory diseases	49/1069 (4.6)	2.25 (1.22–4.13)	0.009	2.40 (1.29–4.46)	0.006	2.04 (1.04–4.01)	0.039
	HIV infection	59/931 (5.5)	1.22 (0.66–2.28)	0.528	1.18 (0.62–2.24)	0.62		
	Diabetes	62/1069 (5.8)	0.77 (0.38–1.53)	0.452	0.89 (0.44–1.84)	0.767		
	COPD	23/1069 (2.2)	0.85 (0.29–2.52)	0.767	0.93 (0.31–2.79)	0.892		
Substance abuse (No)	Alcohol abuse	57/1029 (5.3)	0.65 (0.30–1.39)	0.263	0.69 (0.32–1.53)	0.371		
	Drug abuse	47/1042 (4.4)	0.96 (0.46–2.01)	0.904	0.93 (0.43–2.0)	0.85		
Site of disease (ETB)	PTB	481/1069 (45.0)	1.71 (1.26–2.31)	0.001	1.67 (1.22–2.29)	0.001	1.69 (1.22–2.35)	0.002

OR = Odds ratio; CI = confidence interval; PTB = Pulmonary tuberculosis; ETB = Extrapulmonary tuberculosis.

functional T-cells which, when presented with TB antigens, will respond with the production of interferon- γ . Another reason for these results may lie in the severity of pulmonary TB cases. Different studies have shown that severe pulmonary disease can be associated with immune suppression which may lead to reduced interferon- γ production.^{34,35} During TB progression, the natural cytokine balance is altered while the bacterial load increases, potentially influencing the performance of IGRA tests resulting in a reduction in *M. tuberculosis* specific immune responses, especially interferon- γ production.^{36,37}

Considering the existence of highly heterogeneous clinical manifestations associated to the fact that most forms of ETB do not contribute to the transmission of TB, and also considering that research in ETB and their influence in the immune response is scarce, it is imperative to develop further studies in order to better understand the performance of the test in the different clinical manifestations of TB.

We observed that inflammatory diseases were an independent predictive factor for negative IGRA results in patients with active TB. With the growing use of biologic therapies for inflammatory rheumatic diseases and the increased risk of TB associated³⁸ with their use, our results show that the use of IGRA alone may not be sufficient to eliminate the possibility of an *M. tuberculosis* infection. In view of the high risk of TB in these patients and the possibility of false negative results, a dual testing strategy of IGRA and TST could be more effective for LTBI diagnosis, as other studies involving patients with inflammatory diseases concluded.^{39–41}

In our study, five of the 49 patients with inflammatory diseases presented an indeterminate IGRA result but no significant association was found. Some studies have identified an association,^{39,42,43} with the corticosteroids used in the treatment of these diseases being the common predictive factor for indeterminate results. No treatment data was available in our study.

Our study has limitations. T-cell assays like IGRA are susceptible to variability by different factors associated with assay manufacturing, pre-analytical processing or analytical testing.³ However, despite their importance we were unable to determine the impact of these factors on the IGRA results used in the study. Due to the absence of healthy individuals in our study population, it was not possible to estimate the specificity for both immunologic tests, TST and IGRA. The presence of variables based on patient self-report (e.g. alcohol abuse, drug abuse) may have led to a less accurate estimate of the impact of these variables. The use of active TB patients as a proxy to assess the sensitivity of IGRA and TST has the disadvantage that patients with active TB may present immunosuppression due to the disease itself, thus obtaining a different response than with patients with a latent infection or recent infection.

On the other hand, our analysis of the performance of the IGRA test was comprehensive. It involved a considerable number of patients with different risk factors, which allowed observation of the performance of IGRA in different contexts, contributing to a better understanding of how to use this test in populations with certain risk factors. In addition, the comparison with the other screening method for LTBI available (TST) provided additional information on how

these tests can be used in order to enhance the detection of cases of infection.

Conclusion

In our study we identified three factors associated with the occurrence of indetermined IGRA results - age over 70 years, alcohol abuse and pulmonary TB.

Inflammatory diseases and pulmonary TB were independent risk factors for false negative IGRA results in patients with active TB.

Given the impact that treatments of inflammatory diseases have on the development of active TB, our results suggest a careful interpretation of a negative result, since there is a significant risk of false negative results.

The fact that the IGRA appears to perform well in patients with ETB (less indeterminate and false negative results than in patients with pulmonary TB), makes it a valuable diagnostic tool in these cases.

Funding

Fundação para a Ciência e Tecnologia provided financial support to conduct this research [Grant: PTDC/SAU-PUB/31346/2017] but had no involvement in the research itself.

Declarations of interest

None.

Appendix A. Supplementary data

Supplementary material related to this article can be found, in the online version, at doi:<https://doi.org/10.1016/j.pulmoe.2019.11.001>.

References

1. Getahun H, Matteelli A, Abubakar I, Abdel Aziz M, Baddeley A, Barreira D, et al. Management of latent *Mycobacterium tuberculosis* infection: WHO guidelines for low tuberculosis burden countries. *Eur Respir J*. 2015;46(6):1563–76.
2. Matteelli A, Sulis G, Capone S, D'Ambrosio L, Migliori GB, Getahun H. Tuberculosis elimination and the challenge of latent tuberculosis. *Press Medicale*. 2017;46(2):e13–21.
3. Pai M, Denking C, Kik SV, Rangaka M, Zwerling A, Oxlade O, et al. Gamma interferon release assays for detection of *Mycobacterium tuberculosis* infection. *Clin Microbiol Rev*. 2014;27(1):3–20.
4. Choi JC, Jarlsberg LG, Grinsdale JA, Osmond DH, Higashi J, Hopewell PC, et al. Reduced sensitivity of the QuantiFERON® test in diabetic patients with smear-negative tuberculosis. *Int J Tuberc Lung Dis*. 2015;19(5):582–8.
5. Metcalfe JZ, Everett CK, Steingart KR, Cattamanchi A, Huang L, Hopewell PC, et al. Interferon- γ release assays for active pulmonary tuberculosis diagnosis in adults in low-and middle-income countries: Systematic review and meta-analysis. *J Infect Dis*. 2011;204 SUPPL. 4.
6. Sollai S, Galli L, de Martino M, Chiappini E. Systematic review and meta-analysis on the utility of Interferon-gamma release

- assays for the diagnosis of *Mycobacterium tuberculosis* infection in children: a 2013 update. *BMC Infect Dis.* 2014;14 Suppl 1(Suppl 1):S6.
7. Mandalakas AM, Detjen AK, Hesselning AC, Benedetti A, Menzies D. Interferon-gamma release assays and childhood tuberculosis: Systematic review and meta-analysis. *Int J Tuberc Lung Dis.* 2011;15(8):1018–32.
 8. Sharninghausen JC, Shapiro AE, Koelle DM, Kim HN. Risk Factors for Indeterminate Outcome on Interferon Gamma Release Assay in Non-US-Born Persons Screened for Latent Tuberculosis Infection. *Open Forum Infect Dis.* 2018;5(8):1–8.
 9. American Thoracic Society, CDC. Targeted tuberculin testing and treatment of latent tuberculosis infection. *Am J Respir Crit Care Med.* 2000;161:221–47.
 10. Altman D. Practical statistics for medical research. first edit London: CRC Press; 1991.
 11. Dewan PK, Grinsdale J, Kawamura LM. Low Sensitivity of a Whole-Blood Interferon- γ Release Assay for Detection of Active Tuberculosis. *Clin Infect Dis.* 2007;44(1):69–73.
 12. Takasaki J, Manabe T, Morino E, Muto Y, Hashimoto M, Iikura M, et al. Sensitivity and specificity of QuantiFERON-TB Gold Plus compared with QuantiFERON-TB Gold In-Tube and T-SPOT.TB on active tuberculosis in Japan. *J Infect Chemother.* 2018;24(3):188–92.
 13. Diel R, Loddenkemper R, Nienhaus A. Evidence-Based Comparison of Commercial Interferon- γ Release Assays for Detecting Active TB. *Chest.* 2010;137(April (4)):952–68.
 14. Sester M, Sotgiu G, Lange C, Giehl C, Girardi E, Migliori GB, et al. Interferon- γ release assays for the diagnosis of active tuberculosis: A systematic review and meta-analysis. *Eur Respir J.* 2011;37(1):100–11.
 15. Lu P, Chen X, Zhu L, Yang H. Interferon-gamma release assays for the diagnosis of tuberculosis: a systematic review and meta-analysis. *Lung.* 2016;194(June 2 (3)):447–58.
 16. Pai M, Zwerling A, Menzies D. Systematic Review : T-Cell – based Assays for the Diagnosis of Latent Tuberculosis Infection : An Update. *Ann Intern Med.* 2008;149:177–84.
 17. Auld SC, Click ES, Heilig CM, Miramontes R, Cain KP, Bisson GP, et al. Association Between Tuberculin Skin Test Result and Clinical Presentation of Tuberculosis Disease. *BMC Infect Dis.* 2013;13:460.
 18. Heuvelings CC, Vries SG, Grobusch MP. Tackling TB in low-incidence countries: improving diagnosis and management in vulnerable populations. *Int J Infect Dis.* 2017;56(March):77–80.
 19. Blumberg HM, Ernst JD. The Challenge of Latent TB Infection. *JAMA.* 2016;316(September 6 (9)):931.
 20. Zão I, Ribeiro AI, Apolinário D, Duarte R. Why does it take so long? The reasons behind tuberculosis treatment delay in Portugal. *Pulmonology.* 2019;25(4):215–22.
 21. Cho K, Cho E, Kwon S, Im S, Sohn I, Song S, et al. Factors Associated with Indeterminate and False Negative Results of QuantiFERON-TB Gold In-Tube Test in Active Tuberculosis. *Tuberc Respir Dis (Seoul).* 2012;72(5):416.
 22. Kwon Y-S, Kim YH, Jeon K, Jeong B-H, Ryu YJ, Choi JC, et al. Factors that Predict Negative Results of QuantiFERON-TB Gold In-Tube Test in Patients with Culture-Confirmed Tuberculosis: A Multicenter Retrospective Cohort Study. *PLoS One.* 2015;10(6):e0129792.
 23. Tebruegge M, De Graaf H, Sukhtankar P, Elkington P, Marshall B, Schuster H, et al. Extremes of age are associated with indeterminate QuantiFERON-TB gold assay results. *J Clin Microbiol.* 2014;52(7):2694–7.
 24. Bergamini BM, Losi M, Vaienti F, D’Amico R, Meccugni B, Meacci M, et al. Performance of Commercial Blood Tests for the Diagnosis of Latent Tuberculosis Infection in Children and Adolescents. *Pediatrics.* 2009;123(March 1 (3)):e419–24.
 25. Rose MV, Kimaro G, Nissen TN, Kroidl I, Hoelscher M, Bygbjerg IC, et al. QuantiFERON[®]-TB gold in-tube performance for diagnosing active tuberculosis in children and adults in a high burden setting. *PLoS One.* 2012;7(7):1–10.
 26. Kobashi Y, Sugiu T, Mouri K, Obase Y, Miyashita N, Oka M. Indeterminate results of QuantiFERON TB-2G test performed in routine clinical practice. *Eur Respir J.* 2009;33(4):812–5.
 27. Friedman H, Pross S, Klein TW. Addictive drugs and their relationship with infectious diseases. *FEMS Immunol Med Microbiol.* 2006;47(3):330–42.
 28. Di L, Li Y. The risk factor of false-negative and false-positive for T-SPOT.TB in active tuberculosis. *J Clin Lab Anal.* 2018;32(2).
 29. Ji L, Lou YL, Wu ZX, Jiang JQ, Fan XL, Wang LF, et al. Usefulness of interferon- γ release assay for the diagnosis of sputum smear-negative pulmonary and extra-pulmonary TB in Zhejiang Province, China. *Infect Dis Poverty.* 2017;6(1):1–5.
 30. Azghay M, Bouchaud O, Mechai F, Nicaise P, Fain O, Stirnemann J. Utility of QuantiFERON-TB Gold In-Tube assay in adult, pulmonary and extrapulmonary, active tuberculosis diagnosis. *Int J Infect Dis.* 2016;44:25–30.
 31. Houston A, Macallan DC. Extrapulmonary tuberculosis. *Medicine (Baltimore).* 2014;42(January (1)):18–22.
 32. Sanches I, Carvalho A, Duarte R. Who are the patients with extrapulmonary tuberculosis? *Rev Port Pneumol.* 2015;21(2):90–3.
 33. Kim YJ, Kang JY, Kim S Il, Chang MS, Kim YR, Park YJ. Predictors for false-negative QuantiFERON-TB Gold assay results in patients with extrapulmonary tuberculosis. *BMC Infect Dis.* 2018;18(1):457.
 34. Shams H, Wizel B, Weis SE, Samten B, Barnes PF. Contribution of CD8(+) T cells to gamma interferon production in human tuberculosis. *Infect Immun.* 2001;69(May (5)):3497–501.
 35. Sodhi A, Gong J, Silva C, Qian D, Barnes PF. Clinical Correlates of Interferon Production in Patients with Tuberculosis. *Clin Infect Dis.* 1997;25(3):617–20.
 36. Vanham G, Toossi Z, Hirsch CS, Wallis RS, Schwander SK, Rich EA, et al. Examining a paradox in the pathogenesis of human pulmonary tuberculosis: Immune activation and suppression/anergy. *Tuber Lung Dis.* 1997;78(3–4):145–58.
 37. de Visser V, Sotgiu G, Lange C, Aabye MG, Bakker M, Bartalesi F, et al. False-negative interferon- γ release assay results in active tuberculosis: a TBNET study. *Eur Respir J.* 2015;45(January (1)):279–83.
 38. Dixon WG, Hyrich KL, Watson KD, Lunt M, Galloway J, Ustianowski A, et al. Drug-specific risk of tuberculosis in patients with rheumatoid arthritis treated with anti-TNF therapy: results from the British Society for Rheumatology Biologics Register. *Ann Rheum Dis.* 2010;69(March (3)):522–8.
 39. Vassilopoulos D, Tsirikla S, Hatzara C, Podia V, Kandili A, Stamoulis N, et al. Comparison of two gamma interferon release assays and tuberculin skin testing for tuberculosis screening in a cohort of patients with rheumatic diseases starting anti-tumor necrosis factor therapy. *Clin Vaccine Immunol.* 2011;18(12):2102–8.
 40. So H, Yuen CS, Yip RM. Comparison of a commercial interferon-gamma release assay and tuberculin skin test for the detection of latent tuberculosis infection in Hong Kong arthritis patients who are candidates for biologic agents. *Hong Kong Med J.* 2017:1–5.
 41. Song G, Bae S, Lee Y. Interferon-gamma release assays versus tuberculin skin testing in patients with rheumatoid arthritis (Provisional abstract). *Int J Rheum Dis.* 2013;16:279–83.

42. Cho H, Kim YW, Suh C-H, Jung J-Y, Um Y-J, Jung J-H, et al. Concordance between the tuberculin skin test and interferon gamma release assay (IGRA) for diagnosing latent tuberculosis infection in patients with systemic lupus erythematosus and patient characteristics associated with an indeterminate IGRA. *Lupus*. 2016;25(Oct 11 (12)):1341–8.
43. Kaur M, Singapura P, Kalakota N, Cruz G, Shukla R, Ahsan S, et al. Factors That Contribute to Indeterminate Results From the QuantiFERON-TB Gold In-Tube Test in Patients With Inflammatory Bowel Disease. *Clin Gastroenterol Hepatol*. 2018;16(10), 1616-1621.e1.