

ORIGINAL ARTICLE

Correlations between osteoprotegerin serum levels and body composition parameters in patients with sleep apnea syndrome and the possible influence on cardiovascular risk



M. Kosacka*, P. Piesiak, I. Porebska, R. Jankowska

Department of Pulmonology and Lung Cancer, Wrocław Medical University, Wrocław, Poland

Received 15 October 2014; accepted 24 January 2015
Available online 11 March 2015

KEYWORDS

Osteoprotegerin;
OSA;
Body composition

Abstract

Introduction: Osteoprotegerin (OPG) is a member of the tumor necrosis factor family and a key regulator in bone turnover; it plays a role in the development of many cardiovascular diseases and may be treated as a marker of vascular damage. Bioelectrical impedance analysis (BIA) is a reliable, non-invasive and effective technique for measuring body composition.

The aim of the study was to evaluate correlations between osteoprotegerin serum levels and body composition parameters in sleep apnea patients and their influence on cardiovascular risk.

Material and methods: A total of 125 patients with newly diagnosed OSA were enrolled in the study (including 34 females). The mean age was 54.48 ± 8.81 years, mean AHI $33.16 \pm 20.44/h$ and mean BMI 33.76 ± 7.18 . A control group comprised 59 healthy subjects with mean age of 51.27 ± 12.97 years and mean BMI 29.47 ± 5.42 .

All subjects underwent a nocturnal respiratory polygraphy and body composition measurements were taken with bioelectrical impedance analysis. OPG serum levels were measured using the enzyme-linked immunosorbent assay (ELISA) method.

Results: In OSA patients OPG correlated negatively with muscle mass percentage (MM%), phase angle, fat free mass percentage (FFM%) and body cell mass percentage (BCM%), while there was a positive correlation between osteoprotegerin and fat mass percentage (FM%). We demonstrated higher OPG serum levels in OSA patients with cardiovascular diseases than in those without comorbidities (4.01 vs 3.46 pmol/l, $p < 0.05$).

* Corresponding author.

E-mail address: mokka113@hotmail.com (M. Kosacka).

Conclusion: Our findings, combined with previous observations in other diseases, suggest that elevated OPG serum levels together with selected body composition parameters may be helpful in identifying OSA patients with increased cardiovascular risk.

© 2014 Sociedade Portuguesa de Pneumologia. Published by Elsevier España, S.L.U. All rights reserved.

Introduction

Osteoprotegerin (OPG) belongs to the TNF (tumor necrosis factor) receptor family. This soluble glycoprotein is a key regulator in bone turnover.¹ OPG inhibits osteoclast differentiation and bone resorption.^{2,3} However OPG expression has been observed not only in bone but also in many other human tissues, including endothelial and smooth vascular cells.² Osteoprotegerin is a decoy receptor for two important ligands: RANKL (receptor activator of nuclear factor kappa B ligand) and TRAIL (TNF-related apoptosis-inducing ligand). OPG prevents TRAIL-induced apoptosis and inhibits nuclear factor kappa B, which plays a role in regulating inflammation, innate immunity and the vascular system.^{1,2,4} The presence of OPG was reported in atherosclerotic plaque⁵ and many authors treat OPG as a mediator of vascular calcification, which is a key part of the atherosclerotic process.^{1,2,4} In addition, studies have shown that OPG is involved in the development of many cardiovascular diseases and their complications.^{2,6,7}

Bioelectrical impedance analysis (BIA) is a reliable, non-invasive and effective technique for measuring body composition. The principle of BIA is to determine the electric impedance of an electrical current passing through the body. BIA analysis uses the changes in electric current flow through the body depending on its composition and the electrical resistance of the different tissues.^{8,9} This body composition measurement method was evaluated in different groups of patients including healthy subjects, COPD patients and cancer patients.^{10,11}

The aim of this study was to evaluate the correlations between osteoprotegerin serum levels and body composition parameters in sleep apnea patients and their influence on cardiovascular risk.

Materials and methods

Patients

A total of 125 patients with newly diagnosed obstructive sleep apnea (OSA) syndrome were enrolled in the study. The group examined comprised 91 males and 34 females with a mean age of 54.48 ± 8.81 years. The majority of patients had severe OSA with mean AHI (apnea hypopnea index) of $33.16 \pm 20.44/h$. Almost all subjects were overweight or obese with mean BMI (body mass index) 33.76 ± 7.18 . Many cardiovascular co-morbidities were observed in the OSA patients: 82 had hypertension, 31 diabetes and 25 ischemic heart disease. We divided the OSA patients into two subgroups: those with cardiovascular diseases and those

without. The first group ($n=89$) included patients with one or more cardiovascular diseases, only 36 of the patients presented OSA without any other disease.

A control group was composed of 59 healthy subjects, including 29 females. The mean age was 51.27 ± 12.97 years and the mean BMI was 29.47 ± 5.42 .

Polygraphy

All subjects underwent a nocturnal respiratory polygraphy using a Grass Aura Lite PSG (Warwick, USA). All examinations were performed in hospital. The following channels were used in our study: nasal pressure airflow signal, pulse, saturation, electrocardiogram (ECG), thorax and abdomen movements, leg movements, snoring and body position. The following parameters were evaluated during 8 h of nocturnal sleep: AHI, desaturation index (DI), mean and minimum SaO_2 at the end of sleep apnea/hypopnea episodes. Apnea was defined as a cessation of airflow for more than 10 s¹² and hypopnea as a reduction in airflow by at least 30% of its value during wakefulness for at least 10 s followed by a 4% or greater decrease in oxyhemoglobin saturation.¹³ An oxygen desaturation event was detected when oxygen saturation fell by at least 4%.

Body composition

All subjects underwent bioelectrical impedance analysis (BIA) with a single-frequency bioimpedance analyzer (Model BIA 101, AKERN-RJL, Italy). Measurements were taken in the morning, while the patients lay comfortably with their limbs abducted. Current injection electrodes were placed below the phalangeal-metacarpal joint in the middle of the right hand on the dorsal side and below the metatarsal arch on the upper side of the right foot. Detector electrodes were placed on the posterior side of the right wrist and ventrally across the right medial ankle bone. Body composition was determined by injecting 800 μA and 50 kHz of alternating sinusoidal current using standard tetrapolar technique. Body composition parameters were calculated using the BODYGRAM 1.31 software.

Osteoprotegerin

Blood samples were collected from fasting subjects in the morning. After centrifugation for 10 min at 1467 RCF, the serum was extracted and stored at -80°C . Osteoprotegerin serum levels were measured using the enzyme-linked immunosorbent assay (ELISA) method and the following

Table 1 Correlation coefficients between osteoprotegerin serum levels and selected body composition parameters in OSA patients and control group.

Body composition parameters	Osteoprotegerin serum levels			
	Control group		OSA patients	
	r_s	p	r_s	p
BMI	0.075	NS	0.112	NS
Phase angle	-0.018	NS	-0.224	<0.05
BCM%	-0.017	NS	-0.218	<0.05
FM%	0.108	NS	0.216	<0.05
FFM%	-0.108	NS	-0.218	<0.05
MM%	-0.091	NS	-0.276	<0.05
Age	0.295	<0.05	0.395	<0.05
AHI	0.107	NS	0.144	NS
DI	0.057	NS	0.109	NS
CRP	0.168	NS	0.341	<0.05
Total cholesterol	-0.073	NS	0.095	NS
LDL	-0.063	NS	0.019	NS
HDL	-0.144	NS	0.156	NS
Triglycerids	0.246	NS	0.080	NS

kit: Human Osteoprotegerin (R&D Systems, Minneapolis, USA). The tests were performed according to the manufacturer's specifications. The ELISA microplate reader from MRXe Dynex Technologies (Chantilly, USA) was used.

The following biochemical parameters were also measured in the blood serum sample: CRP, total cholesterol, LDL cholesterol, HDL cholesterol, and triglycerides.

Statistical analysis

Statistical analysis was performed using the CSS Statistica software for Windows (version 5.0). Spearman's r correlation coefficient was used to assess the relationship between two variables and the Mann-Whitney U test to compare values between the two groups. Differences between samples were considered significant at $p < 0.05$.

This work has been approved by the institution's relevant ethics committees: the Commission of Bioethics at Wrocław Medical University. All patients gave their written informed consent to participate in the study.

Results

Many correlations between osteoprotegerin serum levels and body composition parameters were observed in OSA patients. Osteoprotegerin correlated negatively with muscle mass percentage (MM%), phase angle, fat free mass percentage (FFM%) and body cell mass percentage (BCM%), while higher osteoprotegerin was associated with higher fat mass percentage (FM%). In the control group we were unable to find any correlations between body composition parameters and osteoprotegerin serum levels (Table 1).

Higher OPG serum levels were observed in OSA patients with cardiovascular diseases compared with those with OSA without co-morbidities (4.01 vs 3.46 pmol/l, $p < 0.05$) (Fig. 1). In addition, in the group of OSA patients with

cardiovascular diseases, phase angle (5.55 vs 5.98 $p < 0.05$) and MM% (41.42 vs 45.15 $p < 0.05$) were lower than in OSA patients without co-morbidities.

There were no statistically significant differences in osteoprotegerin serum levels between OSA patients and those in the control group (3.85 vs 3.93 pmol/l) and we did not observe any correlations between osteoprotegerin and OSA parameters such as AHI, DI or mean saturation.

We demonstrated a positive relationship between age and osteoprotegerin in the control group ($r_s = 0.295$; $p < 0.05$) and in OSA patients ($r_s = 0.395$; $p < 0.05$). Osteoprotegerin correlated positively with CRP (C-reactive protein) in OSA patients ($r_s = 0.341$; $p < 0.05$), but not in the control group. No significant correlations were found between OPG and

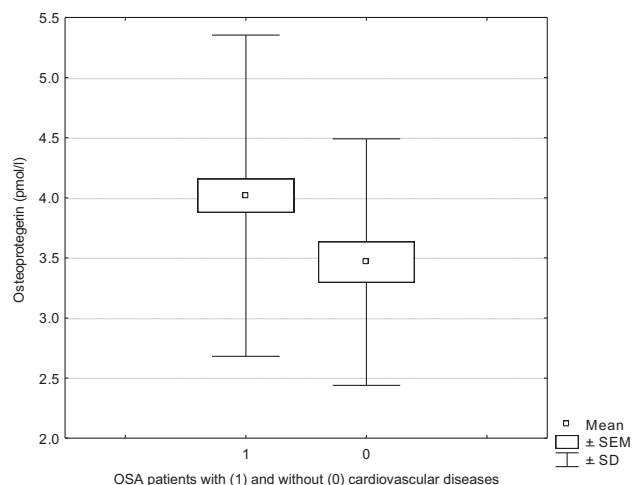


Figure 1 Differences in osteoprotegerin serum levels between OSA patients with cardiovascular disease (CVD) and OSA without CVD. Abbreviations: SEM, standard error of the mean; SD, standard deviation.

total cholesterol, LDL, HDL or triglycerides in both groups: OSA patients and the control group.

Discussion

Our study showed many correlations between osteoprotegerin serum levels and body composition parameters in OSA patients. In the literature, we were not able to find any previous studies on osteoprotegerin serum levels in OSA patients and correlations between osteoprotegerin and body composition parameters in this syndrome, so we were only able to use base experimental studies and observations made for other diseases.

Einvik et al. examined OPG in patients at high risk of obstructive sleep apnea, however these authors concentrated on associations between depressive syndrome and inflammatory markers. They showed that CRP was associated with depressive symptoms, but did not observe any correlation between depression and OPG or adiponectin.¹⁴

In our study, in OSA patients the osteoprotegerin correlated negatively with phase angle, FFM%, BCM% and MM% and we also found a positive correlation between osteoprotegerin and FM%. However OPG did not correlate with BMI and the relationship between obesity and OPG is disputable. Gannage-Yared et al. were unable to find any correlation between OPG and BMI, and did not demonstrate differences between OPG levels in obese and non-obese patients.¹⁵ In contrast, Ashley et al. observed decreased OPG levels in obese patients and negative correlation with BMI.¹⁶

Previous findings indicate the relationship between OPG and adipose tissue. After evaluation of OPG expression in the fatty tissue, Pobeha et al. suggested that this expression is related to osteoporosis in COPD patients and OPG acts as mediator between fat mass and bone mineral density.¹⁷ In addition, observations made by Frederiksen et al. during testosterone therapy suggested that decreased OPG levels could be associated with changes in fat tissue distribution.¹⁸ Our findings that OPG correlated positively with fatty tissue percentage are in contrast to observations made by Eagan et al. In stable COPD patients, these authors showed that a higher FMI (fat mass index) was associated with lower osteoprotegerin plasma levels, whereas FFMI was unrelated to osteoprotegerin.¹⁹

It is interesting that correlations between osteoprotegerin and body composition parameters were only demonstrated in OSA patients, but not in the control subjects.

These findings could be connected with affected bone metabolism in OSA patients and our results may suggest that in OSA patients bone turnover increases with obesity. Unfortunately, we did not take any bone density measurements from the patients examined. The influence of OSA on bone density is disputable. Some studies have suggested an increased risk of osteoporosis in OSA patients connected with increased bone resorption and suppressed bone formation. Uzkeser et al. demonstrated decreased levels of BMD at femoral and lumbar sites in OSA patients²⁰ while other authors showed an increase in the bone resorption marker, reversed by CPAP treatment in about 50% of patients.²¹ Hypoxia and oxidative stress in particular, which are common in OSA, have a negative effect on bone turnover.²¹ However other authors present conflicting results. Sforza

et al. studied a very large group (833 persons) and found higher femoral and spinal BMD in OSA patients and positive associations between T-scores and AHI and DI.²²

However OPG could be treated as a marker of vascular damage and correlations between osteoprotegerin and body composition could reflect their influence on cardiovascular risk, especially given that in OSA patients with cardiovascular diseases we demonstrated higher OPG serum levels and lower phase angle and MM%. Our results connecting increased OPG with a higher cardiovascular risk agree with many previous findings.^{7,23} Blazquez-Medela et al. showed in a large group of patients ($n = 191$), that OPG could be treated as an indicator of diabetes and hypertension associated vascular pathologies. OPG levels were higher in hypertensive patients with retinopathy, in patients with three or more damaged target organs (heart, vessels, kidney) and in patients with a history of schaeemic cardiopathy episodes.²³ In addition, it has been demonstrated that, OPG serum levels are higher in patients with carotid plaque than in those without.²⁴

A negative correlation with phase angle may also confirm that OPG could indicate an increased risk of cardiovascular diseases in OSA patients. Phase angle provides information about cell membrane function, hydration and body cell mass.^{9,25} It is a marker of training status and decreased phase angle could indicate impaired nutritional and functional status.^{9,25} Some studies demonstrated that lower phase angle could be recognized as a new marker of increased cardiovascular risk.²⁶

Our observations that OPG correlated positively with age^{15,23} and CRP¹⁵ are in agreement with some previous studies, especially given that OPG is treated as inflammatory marker. We were unable to find any correlations between OPG and cholesterol fractions, as observed by Gannage-Yared et al.¹⁵

We are aware that our study has several limitations. First of all, the majority of OSA patients examined had cardiovascular diseases (CVD). This proportion was connected with a close association between OSA and cardiovascular morbidity.²⁷⁻²⁹ Some authors have even indicated that OSA should be treated as an independent risk factor for CVD.²⁷ However a bigger group of OSA patients without CVD could be helpful in providing better identification of OSA patients with or without lower cardiovascular risk, which could influence therapeutic approaches in the future. In addition, this group of OSA patients is not well enough described, because the majority of studies concentrate on OSA patients with CVD, as we did. Many mechanisms are connected with higher CVD incidence in OSA, including increased sympathetic activity, oxidative stress, systemic inflammation, abnormal coagulation, endothelial dysfunction and metabolic dysregulation.²⁷⁻²⁹ That is why only one parameter of low OPG serum level is not enough to exclude cardiovascular risk in OSA. Elevated OPG together with some body composition parameters may only suggest increased cardiovascular risk, but more studies are needed to explain these relationships.

Conclusion

Our findings, combined with previous observations in other diseases, suggest that elevated OPG serum levels together

with selected body composition parameters may be helpful in identifying OSA patients with increased cardiovascular risk.

Ethical disclosures

Protection of human and animal subjects. The authors declare that the procedures followed were in accordance with the regulations of the relevant clinical research ethics committee and with those of the Code of Ethics of the World Medical Association (Declaration of Helsinki).

Confidentiality of data. The authors declare that they have followed the protocols of their work center on the publication of patient data.

Right to privacy and informed consent. The authors declare that no patient data appear in this article.

Conflicts of interest

The authors have no conflicts of interest to declare.

Authorship

MK, PP and IP collected information about patients and performed examinations. MK performed BIA measurements, statistical analysis and drafted manuscript. RJ coordinated the study and made improvements in the manuscript. All authors read and approved the final manuscript.

References

- Bierre M. Osteoprotegerin (OPG) as a biomarker for diabetic cardiovascular complications. *Springerplus*. 2013;2:658.
- Van Campenhout A, Golledge J. Osteoprotegerin: vascular calcification and atherosclerosis. *Atherosclerosis*. 2009;204(2):321–9.
- Takahashi N, Udagawa N, Suda T. A new member of tumor necrosis factor ligand family: ODF/OPGL/TRANCE/RANKL, regulates osteoclast differentiation and function. *Biochem Biophys Res Commun*. 1999;256(3):449–55.
- Schoppet M, Al-Fakhri N, Franke FE, Katz N, Barth PJ, Maisch B, et al. Localization of osteoprotegerin, tumor necrosis factor-related apoptosis-inducing ligand, and receptor activator of nuclear factor-kappa B ligand in Moenckeberg's sclerosis and atherosclerosis. *J Clin Endocrinol Metab*. 2004;89(8):4104–12.
- Dhore CR, Cleutjens JP, Lutgens E, Cleutjens KB, Geusens PP, Kitslaar PJ, et al. Differential expression of bone matrix regulatory proteins in human atherosclerotic plaques. *Arterioscler Thromb Vasc Biol*. 2001;21(12):1998–2003.
- Kiechl S, Werner P, Knoflach M, Furtner M, Willeit J, Schett G. The osteoprotegerin/RANKL/RANK system: a bone key to vascular disease. *Expert Rev Cardiovasc Ther*. 2006;4(6):801–11.
- D'Amelio P, Isaia G, Isaia GC. The osteoprotegerin/RANK/RANKL system: a bone key to vascular disease. *J Endocrinol Invest*. 2009;32(4):6–9.
- Lewitt A, Mądro E, Krupienicz A. Theoretical foundations and practical applications of bioelectrical impedance analysis (BIA). *Endokrynologia, Otyłość, Zaburzenia Przemiany Materii*. 2007;3(4):79–84.
- Walter-Kroker A, Kroker A, Mattiucci-Guehlke M, Glaab T. A practical guide to bioelectrical impedance analysis using the example of chronic obstructive pulmonary disease. *Nutr J*. 2011;10:35.
- Segal KR, Van Loan M, Fitzgerald PI, Hodgdon JA, Van Itallie TB. Lean body mass estimation by bioelectrical impedance analysis: a four-site cross-validation study. *Am J Clin Nutr*. 1988;47(1):7–14.
- Gupta D, Lammersfeld CA, Vashi PG, King J, Dahlk SL, Grutsch JF, et al. Bioelectrical impedance phase angle in clinical practice: implications for prognosis in stage IIIB and IV non-small cell lung cancer. *BMC Cancer*. 2009;28(9):37.
- The Report of an American Academy of Sleep Medicine Task Force. Sleep-related breathing disorders in adults: recommendations for syndrome definition and measurement techniques in clinical research. *Sleep*. 1999;22:667–89.
- Meoli AL, Casey KR, Clark RW, Coleman JA Jr, Fayle RW, Troell RJ, et al. Hypopnea in sleep-disordered breathing in adults. *Sleep*. 2001;24:469–70.
- Einvik G, Flyvbjerg A, Hrubos-Strom H, Randby A, Frystyk J, Bierre M, et al. Novel cardiovascular risk markers in depression: no association between depressive symptoms and osteoprotegerin or adiponectin in persons at high risk for sleep apnea. *J Affect Disord*. 2013;145(3):400–4.
- Gannage-Yared MH, Yaghi C, Habre B, Khalife S, Noun R, Germanos-Haddad M, et al. Osteoprotegerin in relation to body weight, lipid parameters insulin sensitivity, adipocytokines, and C-reactive protein in obese and non-obese young individuals: results from both cross-sectional and interventional study. *Eur J Endocrinol*. 2008;158(3):353–9.
- Ashley DT, O'Sullivan EP, Davenport C, Devlin N, Crowley RK, McCaffrey N, et al. Similar to adiponectin, serum levels of osteoprotegerin are associated with obesity in healthy subjects. *Metabolism*. 2011;60(7):994–1000.
- Pobeha P, Ukropec J, Skyba P, Ukropcova B, Joppa P, Kurdivova T, et al. Relationship between osteoporosis and adipose tissue leptin and osteoprotegerin in patients with chronic obstructive pulmonary disease. *Bone*. 2011;48(5):1005–14.
- Frederiksen L, Glibtorg D, Hojlund K, Hougaard DM, Brixen K, Rasmussen LM, et al. Osteoprotegerin levels decrease during testosterone therapy in aging men and are associated with changed distribution of regional fat. *Horm Metab Res*. 2013;45(4):308–13.
- Eagan TM, Aukrust P, Ueland T, Hardie JA, Johannessen A, Mollnes TE, et al. Body composition and plasma levels of inflammatory biomarkers in COPD. *Eur Respir J*. 2010;36(5):1027–33.
- Uzkeser H, Yildirim K, Aktan B, Karatay S, Kaynar H, Araz O, et al. Bone mineral density in patients with obstructive sleep apnea syndrome. *Sleep Breath*. 2013;17(1):339–42.
- Tomiyama H, Okazaki R, Inoue D, Ochiai H, Shijina K, Takata Y, et al. Link between obstructive sleep apnea and increased bone resorption in men. *Osteoporos Int*. 2008;19(8):1185–92.
- Sforza E, Thomas T, Barthelemy JC, Collet P, Roche F. Obstructive sleep apnea is associated with preserved bone mineral density in healthy elderly subjects. *Sleep*. 2013;36(10):1509–15.
- Blazquez-Medela AM, Garcia-Ortiz L, Gomez-Marcos MA, Recio-Rodriguez JI, Sanchez-Rodriguez A, Lopez-Novoa JM, et al. Osteoprotegerin is associated with cardiovascular risk in hypertension and/or diabetes. *Eur J Clin Invest*. 2012;42(5):548–56.
- Asanuma YF, Shimada Y, Kouzu N, Yokota K, Nakajima K, Sato K, et al. Serum osteoprotegerin concentration is associated with carotid atherosclerotic plaque in patients with rheumatoid arthritis. *Mod Rheumatol*. 2012 [Epub ahead of print].
- Norman K, Stobaus N, Pirlich M, Bosy-Westphal A. Bioelectrical phase angle and impedance vector analysis—clinical relevance and applicability of impedance parameters. *Clin Nutr*. 2012;31(6):854–61.
- de Luis DA, Aller R, Romero E, Duenas A, Perez Castillon JL. Relation of phase angle tertiles with blood

- adipocytokines levels, insulin resistance and cardiovascular risk factors in obese women patients. *Eur Rev Med Pharmacol Sci.* 2010;14:521–6.
27. Mc Nicholas WT, Bonsigore MR. Sleep apnoea as an independent risk factor for cardiovascular disease: current evidence, basic mechanisms and research priorities. *Eur Respir J.* 2007;29:156–78.
 28. Lavie L, Lavie P. Molecular mechanisms of cardiovascular disease in OSAHS: the oxidative stress link. *Eur Respir J.* 2009;33:1467–84.
 29. Ryan S, Taylor CT, Mc Nicholas WT. Systemic inflammation: a key factor in the pathogenesis of cardiovascular complications in obstructive sleep apnoea syndrome. *Thorax.* 2009;64: 631–6.