



## ORIGINAL ARTICLE

# Epidemiology, ventilation management and outcome in patients receiving intensive care after non–thoracic surgery – Insights from the LAS VEGAS study



F.D. Simonis<sup>a,\*</sup>, S. Einav<sup>b</sup>, A. Serpa Neto<sup>a,c</sup>, S.N. Hemmes<sup>d</sup>, P. Pelosi<sup>e</sup>, M. Gama de Abreu<sup>f</sup>, M.J. Schultz<sup>a,g,h</sup>

<sup>a</sup> Department of Intensive Care, Amsterdam UMC, location Academic Medical Center, Amsterdam, the Netherlands

<sup>b</sup> General Intensive Care Unit, Shaare Zedek Medical Center and Hebrew University Faculty of Medicine, Jerusalem, Israel

<sup>c</sup> Department of Critical Care Medicine, Australian and New Zealand Intensive Care Research Centre (ANZIC-RC), Monash University, Melbourne, Australia

<sup>d</sup> Department of Anesthesiology, Amsterdam UMC, location Academic Medical Center, Amsterdam, the Netherlands

<sup>e</sup> Department of Surgical Sciences and Integrated Diagnostics, IRCCS San Martino IST, University of Genoa, Genoa, Italy

<sup>f</sup> Department of Anesthesiology and Intensive Care, University Hospital Carl Gustav Carus, Dresden, Germany

<sup>g</sup> Mahidol Oxford Tropical Medicine Research Unit (MORU), Mahidol University, Bangkok, Thailand

<sup>h</sup> Nuffield Department of Medicine, University of Oxford, Oxford, UK

Received 7 March 2021; accepted 26 October 2021

Available online 11 December 2021

## KEYWORDS

Intraoperative ventilation;  
Postoperative ventilation;  
Tidal volume;  
Positive end–expiratory pressure;  
Postoperative pulmonary complications;  
PPC

## Abstract

**Introduction and objectives:** Information about epidemiology, ventilation management and outcome in postoperative intensive care unit (ICU) patients remains scarce. The objective was to test whether postoperative ventilation differs from that in the operation room.

**Material and methods:** This was a substudy of the worldwide observational LAS VEGAS study, including patients undergoing non–thoracic surgeries. Of 146 study sites participating in the LAS VEGAS study, 117 (80%) sites reported on the postoperative ICU course, including ventilation and complications. The coprimary outcomes were two key elements of ventilator management, i.e., tidal volume ( $V_T$ ) and positive end–expiratory pressure (PEEP). Secondary outcomes included the proportion of patients receiving low  $V_T$  ventilation (LTVV, defined as ventilation with a median  $V_T < 8.0$  ml/kg PBW), and the proportion of patients developing postoperative

**Abbreviations:** ARDS, acute respiratory distress syndrome; ARISCAT, assess respiratory risk in surgical patients in Catalonia risk score; CPAP, continuous positive airway pressure;  $FiO_2$ , fraction of oxygen in inspired air; ICU, intensive care unit; IRB, institutional review board; LAS VEGAS, Local ASsessment of VEntilatory management during General Anesthesia for Surgery study; NIV, noninvasive ventilation; OR, odds ratio; PBW, predicted body weight; PEEP, positive end–expiratory pressure; PPC, postoperative pulmonary complications; Pplat, plateau pressure; RR, respiratory rate;  $V_T$ , tidal volume.

\* Corresponding author at: Department of Intensive Care, Amsterdam University Medical Centers, location Academic Medical Center, Amsterdam, Meibergdreef 9, 1105 AZ, Amsterdam, the Netherlands.

E-mail address: [f.d.simonis@gmail.com](mailto:f.d.simonis@gmail.com) (F.D. Simonis).

<https://doi.org/10.1016/j.pulmoe.2021.10.004>

2531-0437/© 2021 Sociedade Portuguesa de Pneumologia. Published by Elsevier España, S.L.U. This is an open access article under the CC BY-NC-ND license (<http://creativecommons.org/licenses/by-nc-nd/4.0/>).

pulmonary complications (PPC), including ARDS, pneumothorax, pneumonia and need for escalation of ventilatory support, ICU and hospital length of stay, and mortality at day 28.

**Results:** Of 653 patients who were admitted to the ICU after surgery, 274 (42%) patients received invasive postoperative ventilation. Median postoperative  $V_T$  was 8.4 [7.3–9.8] ml/kg predicted body weight (PBW), PEEP was 5 [5–5] cm H<sub>2</sub>O, statistically significant but not meaningfully different from median intraoperative  $V_T$  (8.1 [7.3–8.9] ml/kg PBW;  $P < 0.001$ ) and PEEP (4 [2–5] cm H<sub>2</sub>O;  $P < 0.001$ ). The proportion of patients receiving LTVV after surgery was 41%. The PPC rate was 10%. Length of stay in ICU and hospital was independent of development of a PPC, but hospital mortality was higher in patients who developed a PPC (24 versus 4%;  $P < 0.001$ ).

**Conclusions:** In this observational study of patients undergoing non–thoracic surgeries, postoperative ventilation was not meaningfully different from that in the operating room. Like in the operating room, there is room for improved use of LTVV. Development of PPC is associated with mortality. © 2021 Sociedade Portuguesa de Pneumologia. Published by Elsevier España, S.L.U. This is an open access article under the CC BY-NC-ND license (<http://creativecommons.org/licenses/by-nc-nd/4.0/>).

## Introduction

Unsafe ventilator settings affect outcomes in critically ill patients with or without preexisting lung damage.<sup>1</sup> Two worldwide observational studies of ventilation management in intensive care units (ICUs), one in patients with acute respiratory distress syndrome (ARDS)<sup>2</sup> and one in patients at risk for ARDS,<sup>3</sup> showed that a substantial proportion of patients does not receive lung–protective ventilation. One worldwide observational study of ventilation management in the operating room (OR), showed a comparable underuse of lung–protective ventilation.<sup>4</sup>

Postoperative pulmonary complications (PPC), like ARDS, pneumothorax, pneumonia and escalation of ventilatory support are associated with postoperative outcomes.<sup>5</sup> Use of intraoperative protective ventilation has the potential to prevent these complications.<sup>6–8</sup> Protective ventilation at least includes the use of a low  $V_T$ ,<sup>9</sup> and a low driving pressure.<sup>10</sup> The role of PEEP is much less certain, but changes in PEEP that result in a lower driving pressure may reduce postoperative pulmonary complications.<sup>11</sup> There is much less information on the effects of postoperative protective ventilation on outcomes. In cardiac surgery patients, postoperative ventilation with a low  $V_T$  has an association with less organ dysfunctions and a shorter intensive care unit (ICU) length of stay.<sup>12</sup> In hypoxemic cardiac surgery patients, postoperative ventilation with higher positive end–expiratory pressure (PEEP) reduces the severity of postoperative complications and shortens ICU and hospital stay.<sup>13</sup>

It is uncertain whether postoperative ventilation management as provided in the ICU, has associations with outcome alike intraoperative ventilation in the operating room has with the occurrence of postoperative pulmonary complications. We performed a substudy of the LAS VEGAS trial<sup>4</sup> in which we tested the hypotheses that postoperative ventilation in the ICU differs from that in the operating room, and that postoperative ventilation settings have associations with postoperative outcomes.

## Methods

### Study design and ethical concerns

This was a substudy of the LAS VEGAS study,<sup>4</sup> the protocol of the study was first approved by the appropriate Institutional Review Board (IRB) of the Amsterdam University Medical

Centers, location ‘Academic Medical Center’ in Amsterdam, The Netherlands (W12\_190#12.17.0227). The protocol of this substudy was not prepublished, but previously announced.<sup>14</sup> This substudy ran in centers that expressed interest in this part of the protocol, and only if it was possible to collect granular ICU data. The results of the substudy have not been reported before.

Each site was requested to seek approval to implement the study protocol from their respective institutional review boards. If required, written informed consent was obtained from patients. The parent study was registered at clinicaltrials.gov (study identifier NCT01601223).

### Participants

The LAS VEGAS study included adult patients receiving invasive ventilation via either an endotracheal tube or supraglottic device during general anesthesia for elective or non–elective surgery. Patients were excluded if aged less than 18 years of age, or scheduled for pregnancy–related surgery. Additional exclusion criteria of the current analysis were mechanical ventilation in the week before index surgery, surgery involving intrathoracic procedures (i.e., cardiac or lung surgery), and procedures requiring intraoperative one–lung ventilation. Procedures outside the operating room and patients who required cardiopulmonary bypass were also excluded.

Patients were eligible for participation in this substudy if they were admitted at the ICU directly after surgery—whether planned or unplanned. Patients admitted to an ICU at a later time point, i.e., if first transferred to the ward and then admitted at the ICU, were also not included.

### Data collection

The data collected in the LAS VEGAS study included patient baseline characteristics, and the preoperative risk factors for PPC included in the ‘Assess Respiratory Risk in Surgical Patients in Catalonia risk score’ (ARISCAT risk score) for PPC.<sup>15,16</sup> During the intraoperative period, ventilation settings were collected hourly, including  $V_T$ , PEEP, plateau pressure (Pplat), respiratory rate (RR) and fraction of oxygen in inspired air (FiO<sub>2</sub>). During the postoperative period, the highest and lowest daily value of these ventilation variables. In addition, occurrence of PPC was scored up to

postoperative day 5, or up to ICU–discharge, whichever occurred first. Life status was collected up to day 28, or up to hospital–discharge, whichever occurred first.

## Outcomes

The coprimary endpoints were  $V_T$  and PEEP during intraoperative and postoperative ventilation. Secondary endpoints were the proportion of patients receiving low  $V_T$  ventilation (LTVV) in the OR and in the ICU, and other ventilation variables like Pplat, RR and  $FiO_2$ , occurrence of PPC, and ICU and hospital length of stay (LOS) and day–28 in–hospital mortality.

## Definitions

Low  $V_T$  ventilation (LTVV) was defined as ventilation with a median  $V_T \leq 8$  ml/kg PBW; ARDS was defined according to the Berlin definition for ARDS;<sup>17</sup> pneumothorax was scored if it was seen on clinically indicated chest X–ray; pneumonia was diagnosed if a new or progressive infiltrate was seen on a postoperative chest X–ray, and if at least two of the following three following features were present—fever ( $> 38.0^\circ\text{C}$ ), leukocytosis or leukopenia (white blood cell count  $> 12 \times 10^9/\text{ml}$  or  $< 4 \times 10^9/\text{ml}$ ) and purulent secretions. Escalation of ventilatory support was defined as any increase in ventilatory support on a subsequent day—from ‘simple oxygen administration’ (i.e., through a nasal prong, or non–rebreather mask) to ‘continuous positive airway pressure’ (CPAP), to ‘noninvasive ventilation’ (NIV) or to ‘invasive ventilation’. For example, escalation of ventilation was scored when a patient was on CPAP on day 1, but needed NIV on day 2, and also if a patient received NIV on day 1, but needed ‘invasive ventilation’ on day 2, etc.

## Analysis plan

Descriptive statistics are used to study patient characteristics, ventilation parameters and outcomes. Continuous

variables are compared using the Wilcoxon Rank–Sum Test or the Wilcoxon signed–rank test, where appropriate; proportions are compared using the chi–squared test or Fisher exact test. Effects are shown as the average odds ratio with its 95% confidence interval (95% CI).

$V_T$  is reported in absolute volume as well as normalized for PBW. PBW was calculated as  $50 + 0.91 \times (\text{centimeters of height} - 152.4)$  for males and  $45.5 + 0.91 \times (\text{centimeters of height} - 152.4)$  for females.<sup>18</sup>

To compare intraoperative with postoperative ventilation, distribution plots are constructed for  $V_T$ , PEEP, Pplat and RR. These plots used cutoffs that represent widely accepted values of each parameter and are used in most daily practices;  $V_T$  size of 8 ml/kg PBW, RR of 15 breaths per minute, PEEP of 5 cm  $H_2O$  and 25 cm  $H_2O$  for Pplat to form the matrices. For  $FiO_2$  a cutoff of 40% was used.

Nearly all PPC needed a chest X–ray for confirmation; if a X–ray was not obtained, ARDS, pneumothorax and pneumonia was deemed not present. In one posthoc analysis, patients with a planned postoperative ICU admission are compared to patients with an unplanned admission. Kaplan–Meier graphs are used to compare occurrence of PPC, LOS and mortality in ICU and hospital.

All analyses were performed with R version 3.1 (<http://www.R-project.org/>). A  $P$  value  $< 0.05$  was considered significant.

## Results

### Participating centers and patients

Among the 146 sites that participated in the LAS VEGAS study, 117 (80%) took part in this substudy in the ICU. The hospital characteristics of sites that did and did not participate are presented in eTable 1. Participating hospitals were more often teaching hospitals, with a higher number of ICU beds and hospital beds. Patient flow is presented in Fig. 1. Of 9,185 patients undergoing surgery in hospitals

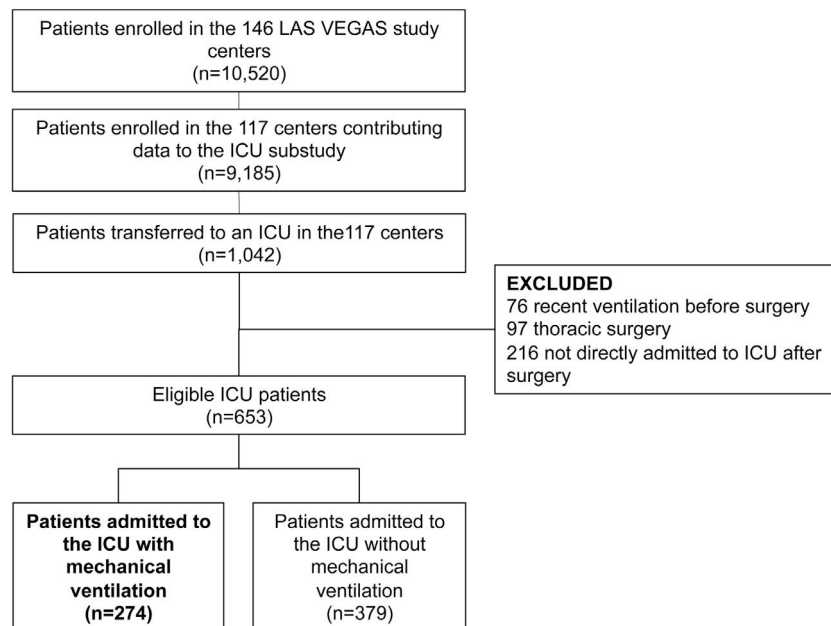


Fig. 1 Flowchart of patients.

participating in this substudy, 1,042 were admitted to an ICU—0.3 patients per ICU bed over a 1-week period. After exclusion of patients with invasive ventilation before surgery, ICU admission not immediately following the surgical procedure, and patients who underwent thoracic surgery, we were left with 653 fully analyzable patients—494 patients (76%) with a planned ICU admission, and 274 patients (42%) who continued with invasive ventilation in the ICU. Baseline characteristics of patients are presented in Table 1.

### Primary outcome

Ventilation management is presented in Fig. 2 and Table 2. Median duration of postoperative invasive ventilation was 3 [2–7] hours; median duration of controlled ventilation was 1 [0–4] hours, after which patients continued with assisted ventilation until tracheal extubation.

Median  $V_T$  in the ICU was 8.4 [7.3–9.8] ml/kg PBW and PEEP was 5 [5–5] cm H<sub>2</sub>O, statistically significant but not meaningfully different from  $V_T$  (8.1 [7.3–8.9] ml/kg PBW;  $P < 0.001$ ) and PEEP in the OR (4 [2–5] cm H<sub>2</sub>O;  $P < 0.001$ ). The proportion of patients receiving LTVV in the ICU was 47%, similar to that in the OR (41%;  $P = 0.13$ ). The proportion of patients receiving a median  $V_T > 10$  ml/kg PBW was 21%, higher than that in the OR (10%,  $P < 0.001$ ). The proportion of patients with median PEEP  $> 5$  cm H<sub>2</sub>O in the ICU was 23%, higher than that in the OR (14%  $< 0.001$ ).

### Secondary outcomes

Occurrence of PPC was 10%. Six patients (1%) developed ARDS, 13 patients (2%) were diagnosed with a pneumothorax, and 20 patients (3%) developed pneumonia. The most frequent PPC was escalation of ventilatory support—of 39 patients (6% of total) who developed this PPC, 33 (85%) needed a step up to invasive ventilation (Table 3).

In patients who developed one or more PPCs median length of stay in the ICU and hospital was 3 [1–5] days and 9 [6–18] days, compared to 1 [1–2] days and 8 [5–13] days in patients who did not develop any PPC ( $P = >0.01$  and  $P = 0.09$ ). Hospital mortality was 24 and 4% ( $P = <0.001$ ) in patients who did develop one or more PPCs versus patients who did not develop any PPC. Kaplan–Meier curves are presented in Fig. 3. Length of ICU and hospital stay was shorter for patients who did not develop any PPC. When comparing the composite outcome of PPC patients who developed ARDS, pneumothorax or pneumonia to patients who needed escalation of ventilation, patients with a PPC were discharged earlier from the ICU. Of note, as shown in Table 3, patients who developed ARDS or pneumothorax spent the longest time in the hospital. Mortality at day 28 was highest for patients who developed ARDS, and higher for patients who needed escalation of ventilation, compared to patients who developed pneumothorax or pneumonia and lowest for patients with no PPC.

### Posthoc analysis

Median length of stay in the ICU and hospital was 1 [1–2] days and 7 [5–9] days, not different between planned and unplanned ICU admissions. Mortality was 6 and 3% ( $P = 0.25$ ), for planned and unplanned ICU admissions.

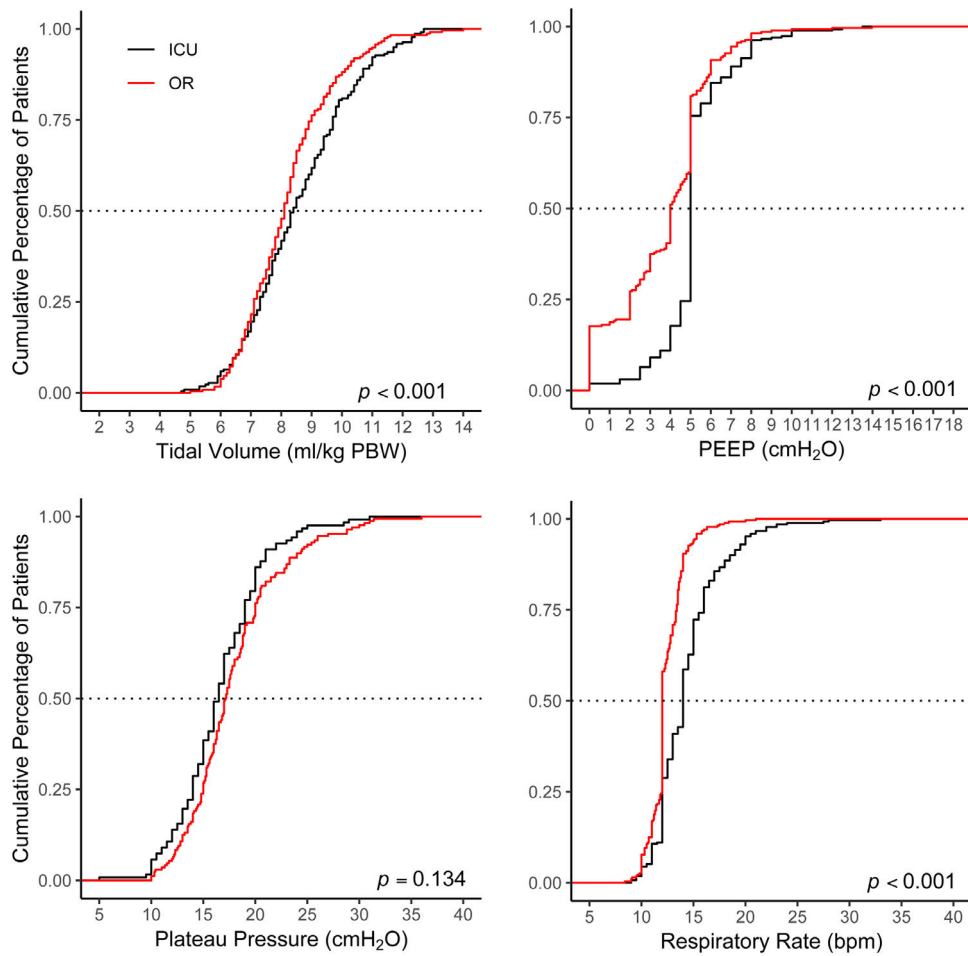
**Table 1** Baseline characteristics.

	All patients N= 653	
Age, Median [IQR]	61	[48.8-72]
ARISCAT score, Median [IQR]	47	[40-51]
Gender, male, N (%)	347	(53.1)
Ethnicity, N (%)		
Asian	17	(2.6)
Black ethnicity	4	(0.6)
Caucasian	561	(85.9)
Hispanic	9	(1.4)
Other	55	(8.4)
Reason for critical care admission, N (%)		
Respiratory failure	73	(11.2)
Intensive monitoring	401	(61.4)
Circulatory failure	86	(13.2)
Routine care (planned)	494	(75.7)
Airway protection	146	(22.4)
Reason for invasive ventilation, N (%)		
Respiratory failure	67	(10.3)
Pneumonia	15	(2.3)
Aspiration	5	(0.8)
Cardiac overload	16	(2.5)
Airway protection	137	(21)
Fatigue	40	(6.1)
Coma	22	(3.4)
Postoperative ventilation	319	(48.9)
Surgical procedure, N (%)		
Lower GI	116	(17.8)
Upper GI, hepatobiliary and pancreas	139	(21.3)
Vascular	30	(4.6)
Aortic	30	(4.6)
Neurosurgery, head and neck	174	(26.6)
Urological and kidney	59	(9)
Gynaecological	46	(7)
Endocrine surgery	6	(0.9)
Transplant	10	(1.5)
Plastic, cutaneous and breast	16	(2.5)
Bone, joint, trauma and spine	47	(7.2)
Other	28	(4.3)
Comorbidity, N (%)		
Liver cirrhosis	15	(2.3)
Metastatic cancer	84	(12.9)
Chronic kidney failure	40	(6.1)
COPD	100	(15.3)
Heart failure	93	(14.2)
Obstructive sleep apnea	26	(4)
Neuromuscular disease	5	(0.8)

Abbreviations: ARISCAT Assess Respiratory Risk in Surgical Patients in Catalonia; IQR interquartile range; GI gastro-intestinal; COPD chronic obstructive pulmonary disease.

### Discussion

The findings of this substudy of a worldwide international 1-week observational study in non-thoracic surgery patients can be summarized as follows: (1) approximately 10% of patients is admitted to ICU after surgery, (2) but less than a third of these patients receive postoperative



**Fig. 2** Ventilation parameters in the operating room vs. in the intensive care unit. Cumulative frequency distribution of tidal volume (top left); positive end–expiratory pressure (top right); plateau pressure (bottom left); and respiratory rate (bottom right).

**Table 2** Ventilatory parameters in OR compared to ICU.

Ventilatory parameters	In OR N= 653		In ICU N= 274*		P-value
$V_T$ , ml	510	[465-575]	525	[475-600]	0.053
$V_T$ , ml/kg PBW	8.1	[7.3-8.9]	8.4	[7.3-9.8]	0.002
≤ 8	244/516	(47)	92/224	(41)	0.133
> 8	272/516	(53)	132/224	(59)	0.133
≤ 10	466/516	(90)	178/224	(79)	<0.001
> 10	50/516	(10)	46/224	(21)	<0.001
PEEP, cm H <sub>2</sub> O	4	[2-5]	5	[5-5]	<0.001
≤ 5	551/645	(84)	200/265	(73)	<0.001
> 5	94/645	(14)	65/265	(23)	<0.001
Ppeak, cm H <sub>2</sub> O	18.4	[15.7-21.5]	21	[20-23]	<0.001
Pplat, cm H <sub>2</sub> O	16.8	[14.3-19.2]	16.5	[14-19]	0.344
RR, bpm	12	[11.7-13.2]	14	[12-16]	<0.001
FiO <sub>2</sub>	56	[47.6-65]	42	[40-50]	<0.001

Data are presented as median [interquartile range] or number (percentage).

OR operation room; ICU intensive care unit;  $V_T$  tidal volume; PBW predicted bodyweight; PEEP positive end-expiratory pressure; RR respiratory rate; bpm breaths per minute.

Percentages are calculated on the amount of available values.

\*of 653 patients transferred to ICU, 274 patients were on invasive ventilation on day 1.

**Table 3** Patient centered outcomes separated for development of PPC.

Outcome parameters	No PPC N = 586	ARDS N = 6	Pneumonia N=20	Pneumothorax N = 9	Escalation of ventilatory support N = 33	P-value
ICU LOS	1 [1-2]	3 [1-5]	2.5 [1-5]	1 [0-4]	3 [2-5]	< 0.001
Hospital LOS	8 [5-13]	16 [11-26]	7 [5.5-17.5]	12 [6-21]	8.5 [6-14]	0.181
ICU death	7 (1.2)	0 (0)	0 (0)	1 (11)	3 (9)	0.028
Hospital death	20 (3.4)	3 (50)	2 (10)	1 (11)	10 (30)	< 0.001

Data are presented as median [interquartile range] or number (percentage).  
 ICU intensive care unit; LOS length of stay; IQR interquartile range; MV mechanical ventilation.  
 Patients are only counted once, i.e., when a patient scored for ARDS, he is no longer counted for another PPC - from left to right.

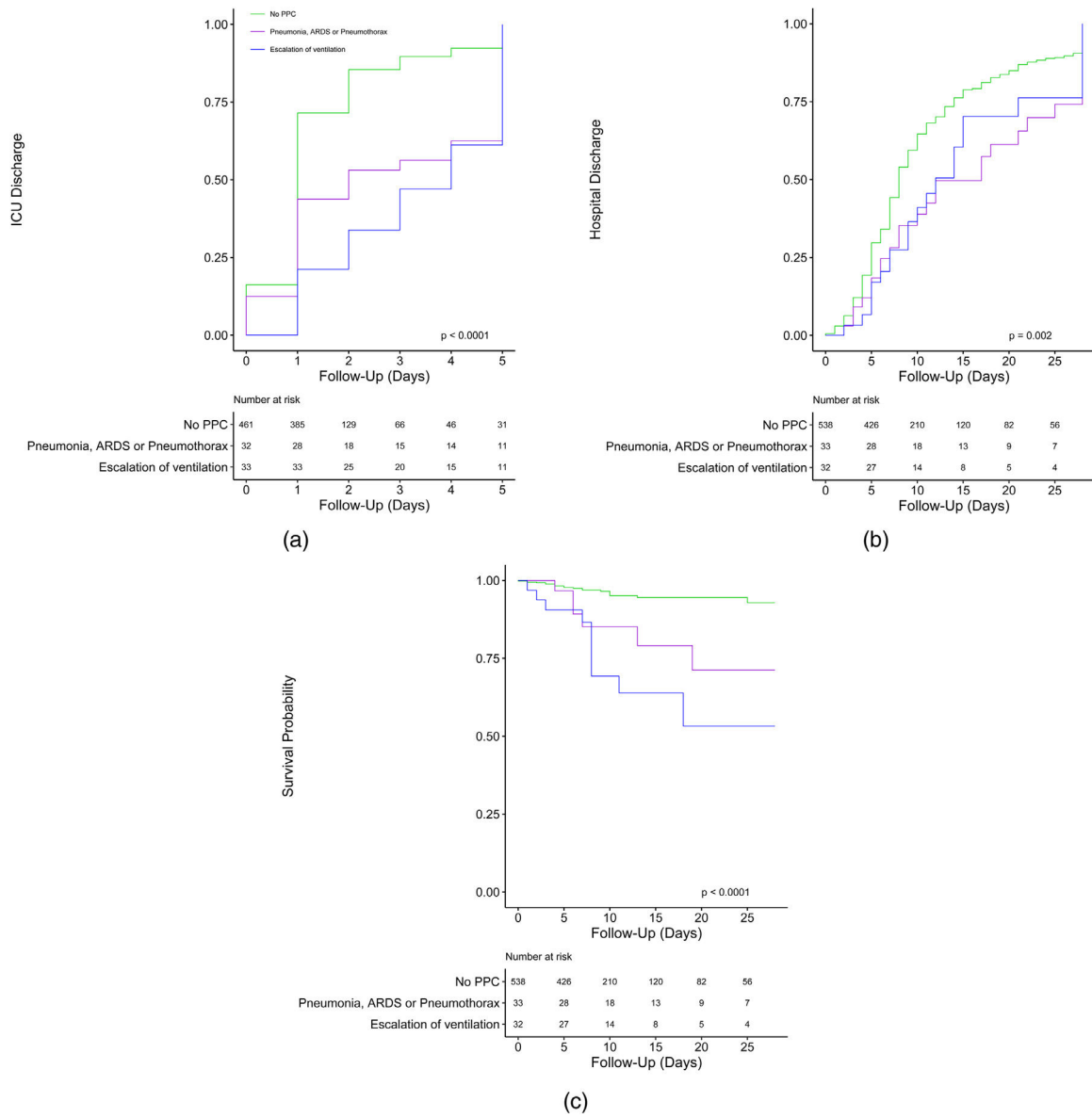
ventilation; and (3) duration of postoperative ventilation in the ICU is short. In addition, (4) postoperative ventilation management mirrors management of intraoperative ventilation with regard to  $V_T$  and PEEP settings; (5) one in every ten patients develops a PPC, not different in planned and unplanned admissions, and (6) development of a PPC is associated with mortality.

Strengths of this study are its prospective data collection and sample size; this was the largest prospective cohort to date describing postoperative ventilation in non-thoracic surgery patients. This is also the first study comparing intraoperative to postoperative ventilation, and reporting the occurrence of PPCs after surgery in patients who need postoperative care in an ICU. We included a yet non-standard pulmonary complication, named 'escalation of ventilation'. This complication has been proposed before, as it represents respiratory failure other than that caused by ARDS, pneumonia or pneumothorax.<sup>5</sup> We believe this is a strength as it shows a group of patients with worse outcome that would otherwise not have been captured. The short inclusion window of one week for the LAS VEGAS study decreases the influence of changes in care over time. The international, multicenter character of this study likely makes the findings generalizable.

Three large prospective observational studies have showed that there is room for improvement in invasive ventilation practice, in ICU patients with ARDS,<sup>2</sup> in ICU patients at risk for ARDS,<sup>3</sup> and in patients receiving intraoperative ventilation during general anesthesia for surgery.<sup>4</sup> The same is true for acutely ill patients receiving invasive ventilation before admission to a hospital, and in the emergency room.<sup>19,20</sup> The findings of the current study are in line with the findings of those studies. Indeed, a large proportion of patients did not receive postoperative LTVV. Our findings are important, as a substantial number of patients need postoperative ventilation in the ICU. At a global scale, this means that improvements in this practice can have enormous effects.

PEEP during ventilation in the ICU was largely the same as during intraoperative ventilation, and PEEP was low in both settings. This may seem in line with recent findings that suggest that most benefit comes from  $V_T$  limitation, and absence of benefit of high PEEP when a low  $V_T$  is used.<sup>21,22</sup> Ventilation with high PEEP also increases the risk for hypotension, thus may increase the need for vasopressors.<sup>21,22</sup> The finding that practice of postoperative ventilation mirrors intraoperative ventilation may suggest that caregivers probably do not change ventilator settings when a patient arrives at the ICU after surgery. A rise in PEEP may only be beneficial in patients who present with postoperative hypoxemia.<sup>13</sup>

PPCs are common and strongly associated with poor outcomes.<sup>4,15</sup> The proportion of patients developing PPCs in the parent LAS VEGAS study<sup>4</sup> and the current substudy are notably different (2.8 vs 10.4%). Compared to the general postoperative population, patients who are transferred directly from the OR to the ICU usually have more comorbidities, and this is indeed reflected by higher ARISCAT risk scores (47 [40–57] in the current cohort versus 15 [3–26] in the full LAS VEGAS study cohort). Higher ARISCAT scores are associated with more frequent development of PPC and worse outcomes,<sup>4,16</sup> which is affirmed by the current findings.



**Fig. 3** Kaplan–Meier curves showing outcome in patients who did or did not develop a PPC, split up for no PPC vs pneumothorax, pneumonia and ARDS vs escalation of ventilatory support for (A) probability of ICU discharge; (B) probability of hospital discharge; (C) probability of in–hospital mortality.

This study has limitations. Compared to the large number of patients in the parent study, the number of patients in this substudy was small as we had only access to ventilation data in the ICU of 274 patients, representing 2,6% of the number of patients in the parent study (10,520 patients). Assuming that the incidence of postoperative ventilation in the ICU in the current cohort is representative for the overall cohort, there could still be reporting bias due to the fact that participation in this substudy was voluntary, and participation could have been rejected because of other reasons than a lack of time or access to the data. This limits the generalizability. Selection bias may have been introduced by two factors. First, a number of hospitals that participated in the parent study did not take part in this substudy. Second, patients with a delayed admission to the ICU, i.e., patients that went to the normal ward after surgery and then were

admitted to the ICU for escalation of care, were excluded from this study. Thus, the findings of this analysis may not be generalizable. However, the latter may also explain why the proportion of patients developing PPC was lower than what would have been expected based on the ARISCAT score, as these patients may need escalation of care after having stayed in the normal ward. Nevertheless, the incidence of PPC was relatively high in comparison to the parent trial. Another important limitation is that duration of ventilation seems relatively short, i.e., median 3 [2–7] hours, but this is not surprising for this category of patients—in the majority of patients it was simple postoperative ventilation. Also, most patients were under controlled ventilation at the moment of collection of ventilation data. Due to the study design, we were not able to define whether or not a patient was having spontaneous breathing activity, and it could also

be that some patients were at a spontaneous ventilation mode at the latest time point ventilation data were captured. In addition, due to the short duration of ventilation in the ICU, biologically plausible relationships could be harder to determine. Nevertheless, the current findings are in line with what has been described over recent years. For instance, duration of ventilation in the ICU was longer than ventilation in the operating room in these patients, and clear associations have been found between intraoperative ventilation settings and postoperative complications. Lastly, using a relatively new and yet unstudied variable, ‘escalation of ventilatory support’, introduces uncertainty.

## Conclusions

Non–thoracic surgery patients seldom need postoperative ICU admission and among those who do, less than half require postoperative ventilation. Intraoperative and postoperative mechanical ventilation settings are comparable, but there is room for improved use of LTVV. PPCs develop as frequent in planned as in unplanned admission, and their occurrence impacts outcome.

## Assistance with the article

The members of the Steering Committee of the ‘Local ASsessment of VEntilatory management during General Anesthesia for Surgery study’ (LAS VEGAS) designed and overviewed conduct of the parent study, and all substudies. LAS VEGAS collaborators for the ICU substudy of LAS VEGAS, consisting of National – and Local Investigators, collected the data. Sabine N. Hemmes was the overall LAS VEGAS coordinator. The substudy was proposed by Sharon Einav, Sabine N. Hemmes and Marcus J. Schultz, and lead by Fabienne D. Simonis and Sharon Einav.

## Members of the LAS VEGAS steering committee

Sabrine N.T. Hemmes (Academic Medical Center, University of Amsterdam, Amsterdam, Netherlands); Ary Serpa Neto (Hospital Israelita Albert Einstein, São Paulo, Brazil); Marcelo Gama de Abreu (University Hospital Dresden, Technical University Dresden, Dresden, Germany); Paolo Pelosi (IRCCS AOU San Martino IST Hospital, University of Genoa, Genoa, Italy); and Marcus J Schultz (Academic Medical Center, University of Amsterdam, Amsterdam, Netherlands & Mahidol University, Bangkok, Thailand)

## The LAS VEGAS network collaborators

Collaborators are listed in the Supplemental digital content (pp. 9–18).

## Funding

The LAS VEGAS study was endorsed, and funded in part by the European Society of Anaesthesiology

## Author contributions

Conception and design: Sabine N. Hemmes, Marcus J. Schultz, Marcelo Gama de Abreu, Paolo Pelosi; Administrative support: Sabine N. Hemmes; Provision of study materials or patients: Sabine N. Hemmes, Marcus J. Schultz; Collection and assembly of data: Sabine N. Hemmes; Marcelo Gama de Abreu; Paolo Pelosi; and Marcus J. Schultz; Data analysis and interpretation: Fabienne D. Simonis, Ary Serpa Neto and Marcus J. Schultz; Manuscript writing: Fabienne D. Simonis and Sharon Einav, supported by all other authors; Final approval of manuscript: All authors

## LAS VEGAS Writing committee & study collaborators

The LAS VEGAS Steering Committee members & Writing Committee members are listed in the acknowledgements section. Collaborators are listed in the Supplemental Digital Content (pp. 9-18)

## Trial registration

Clinicaltrials.gov (study identifier NCT01601223)

## Conflicts of interest

None.

## Supplementary materials

Supplementary material associated with this article can be found in the online version at [doi:10.1016/j.pulmoe.2021.10.004](https://doi.org/10.1016/j.pulmoe.2021.10.004).

## References

- Slutsky AS, Ranieri VM. Ventilator-induced lung injury. *N Engl J Med*. 2013;369(22):2126–36. <https://doi.org/10.1056/NEJMra1208707>.
- Bellani G, Laffey JG, Pham T, et al. Epidemiology, patterns of care, and mortality for patients with acute respiratory distress syndrome in intensive care units in 50 countries. *JAMA*. 2016;315(8):788–800. <https://doi.org/10.1001/jama.2016.0291>.
- Serpa Neto A, Barbas CSV, Simonis FD, et al. Epidemiological characteristics, practice of ventilation, and clinical outcome in patients at risk of acute respiratory distress syndrome in intensive care units from 16 countries (PROVENT): an international, multi-centre, prospective study. *Lancet Respir Med*. 2016;4(11):882–93. [https://doi.org/10.1016/S2213-2600\(16\)30305-8](https://doi.org/10.1016/S2213-2600(16)30305-8).
- LAS VEGAS investigators. Epidemiology, practice of ventilation and outcome for patients at increased risk of postoperative pulmonary complications: LAS VEGAS - an observational study in 29 countries. *Eur J Anaesthesiol*. 2017;34(8):492–507. <https://doi.org/10.1097/EJA.0000000000000646>.
- Abbott TEF, Fowler AJ, Pelosi P, et al. A systematic review and consensus definitions for standardised end-points in perioperative medicine: pulmonary complications. *Br J*



- Anaesth. 2018;120(5):1066–79. <https://doi.org/10.1016/j.bja.2018.02.007>.
6. Futier E, Constantin J-M, Paugam-Burtz C, et al. A trial of intraoperative low-tidal-volume ventilation in abdominal surgery. *N Engl J Med*. 2013;369(5):428–37. <https://doi.org/10.1056/NEJMoa1301082>.
  7. Severgnini P, Selmo G, Lanza C, et al. Protective mechanical ventilation during general anesthesia for open abdominal surgery improves postoperative pulmonary function. *Anesthesiology*. 2013;118(6):1307–21. <https://doi.org/10.1097/ALN.0b013e31829102de>.
  8. Ge Y, Yuan L, Jiang X, Wang X, Xu R, Ma W. [Effect of lung protection mechanical ventilation on respiratory function in the elderly undergoing spinal fusion]. *Zhong Nan Da Xue Xue Bao Yi Xue Ban*. 2013;38(1):81–5. <https://doi.org/10.3969/j.issn.1672-7347.2013.01.015>.
  9. Nguyen D-N, Guay J, Ochroch EA. Intraoperative use of low volume ventilation to decrease postoperative mortality, mechanical ventilation, lengths of stay and lung injury in patients without acute lung injury ed. In: Guay J, ed. *Cochrane Database of Systematic Reviews*, Vol. v. Chichester, UK: John Wiley & Sons, Ltd; 2014. <https://doi.org/10.1002/14651858.CD011151>.
  10. Douville NJ, Jewell ES, Duggal N, et al. Association of intraoperative ventilator management with postoperative oxygenation, pulmonary complications, and mortality. *Anesth Analg*. 2020;130(1):165–75. <https://doi.org/10.1213/ANE.0000000000004191>.
  11. Serpa Neto A, Hemmes SNT, Barbas CS V, et al. Association between driving pressure and development of postoperative pulmonary complications in patients undergoing mechanical ventilation for general anaesthesia: a meta-analysis of individual patient data. *Lancet Respir Med*. 2016;4(4):272–80. [https://doi.org/10.1016/S2213-2600\(16\)00057-6](https://doi.org/10.1016/S2213-2600(16)00057-6).
  12. Lellouche F, Dionne S, Simard S, Bussièrès J, Dagenais F. High tidal volumes in mechanically ventilated patients increase organ dysfunction after cardiac surgery. *Anesthesiology*. 2012;116(5):1072–82. <https://doi.org/10.1097/ALN.0b013e3182522df5>.
  13. Costa Leme A, Hajjar LA, Volpe MS, et al. Effect of intensive vs moderate alveolar recruitment strategies added to lung-protective ventilation on postoperative pulmonary complications. *JAMA*. 2017;317(14):1422. <https://doi.org/10.1001/jama.2017.2297>.
  14. Hemmes SNT, De Abreu MG, Pelosi P, Schultz MJ. ESA clinical trials network 2012: LAS VEGAS - Local assessment of ventilatory management during general anaesthesia for surgery and its effects on postoperative pulmonary complications. *Eur J Anaesthesiol*. 2013;30(5):205–7. <https://doi.org/10.1097/EJA.0b013e32835fcab3>.
  15. Canet J, Gallart L, Gomar C, et al. Prediction of postoperative pulmonary complications in a population-based surgical cohort. *Anesthesiology*. 2010;113(6):1338–50. <https://doi.org/10.1097/ALN.0b013e3181fc6e0a>.
  16. Mazo V, Sabaté S, Canet J, et al. Prospective external validation of a predictive score for postoperative pulmonary complications. *Anesthesiology*. 2014;121(2):219–31. <https://doi.org/10.1097/ALN.0000000000000334>.
  17. The ARDS Definition Task Force. Acute respiratory distress syndrome: the Berlin Definition. *JAMA*. 2012;307(23):2526–33. <https://doi.org/10.1001/jama.2012.5669>.
  18. Acute Respiratory Distress Syndrome Network. Ventilation with lower tidal volumes as compared with traditional tidal volumes for acute lung injury and the acute respiratory distress syndrome. The Acute Respiratory Distress Syndrome Network. *N Engl J Med*. 2000;342(18):1301–8. <https://doi.org/10.1056/NEJM200005043421801>.
  19. Fuller BM, Mohr NM, Miller CN, et al. Mechanical ventilation and ARDS in the ED: A multicenter, observational, prospective, cross-sectional study. *Chest*. 2015;148(2):365–74. <https://doi.org/10.1378/chest.14-2476>.
  20. Stoltze AJ, Wong TS, Harland KK, Ahmed A, Fuller BM, Mohr NM. Prehospital tidal volume influences hospital tidal volume: A cohort study. *J Crit Care*. 2015;30(3):495–501. <https://doi.org/10.1016/j.jcrc.2015.02.013>.
  21. PROVE Network Investigators for the Clinical Trial Network of the European Society of Anaesthesiology/Hemmes SNT, Gama de Abreu M, Pelosi P, Schultz MJ. High versus low positive end-expiratory pressure during general anaesthesia for open abdominal surgery (PROVHILO trial): a multicentre randomised controlled trial. *Lancet (London, England)*. 2014;384(9942):495–503. [https://doi.org/10.1016/S0140-6736\(14\)60416-5](https://doi.org/10.1016/S0140-6736(14)60416-5).
  22. Bluth T, Serpa Neto A, Schultz MJ, Pelosi P, Gama De Abreu M. Effect of intraoperative high positive end-expiratory pressure (PEEP) with recruitment maneuvers vs low peep on postoperative pulmonary complications in obese patients: a randomized clinical trial. *JAMA - J Am Med Assoc*. 2019;321(23):2292–305. <https://doi.org/10.1001/jama.2019.7505>.