



ORIGINAL ARTICLE

Risk factors associated with mortality among elderly patients with COVID-19: Data from 55 intensive care units in Spain



C. Cilloniz^{a,b,c,*}, A. Motos^{a,b}, J.M. Pericàs^d, T.G. Castañeda^b, A. Gabarrús^a, R. Ferrer^e, D. García-Gasulla^f, O. Peñuelas^{a,g}, D. de Gonzalo-Calvo^{a,h}, L. Fernandez-Barat^a, F. Barbé^{a,h}, A. Torres^{a,b,*}, on behalf of CIBERESUCICOVID Project (COV20/00110 ISCIII)

^a Center for Biomedical Research in Respiratory Diseases Network (CIBERES), Institute of Health Carlos III, Madrid, Spain

^b Department of Pneumology, Hospital Clinic of Barcelona; August Pi i Sunyer Biomedical Research Institute—IDIBAPS, University of Barcelona, Barcelona, Spain

^c Facultad de Ciencias de la Salud, Universidad Continental, Huancayo, Perú

^d Liver Unit, Internal Medicine Department, Vall d'Hebron University Hospital, Vall d'Hebron Institute for Research, CIBERehd, Barcelona, Spain

^e Intensive Care Department, Vall d'Hebron University Hospital, Vall d'Hebron Institute for Research, Barcelona, Spain

^f Barcelona Supercomputing Centre (BSC), Barcelona, Spain

^g Hospital Universitario de Getafe, Madrid; Universidad Europea, Madrid, Spain

^h Translational Research in Respiratory Medicine, Respiratory Department, Hospital Universitari Aranu de Vilanova and Santa Maria; IRBLleida, Lleida, Spain

Received 16 July 2022; accepted 31 January 2023

Available online 17 February 2023

KEYWORDS

COVID-19;
Ventilation;
Outcomes;
Critically ill;
Elderly

Abstract

Introduction and objectives: Critically-ill elderly ICU patients with COVID-19 have poor outcomes. We aimed to compare the rates of in-hospital mortality between non-elderly and elderly critically-ill COVID-19 ventilated patients, as well as to analyze the characteristics, secondary outcomes and independent risk factors associated with in-hospital mortality of elderly ventilated patients.

Patients and Methods: We conducted a multicentre, observational cohort study including consecutive critically-ill patients admitted to 55 Spanish ICUs due to severe COVID-19 requiring mechanical ventilation (non-invasive respiratory support [NIRS; include non-invasive mechanical

Abbreviations: NIRS, non-invasive respiratory support; IMV, invasive mechanical ventilation; sHRs, sub-distribution hazard ratios; CIs, confidence intervals; ICU, intensive care unit; REDCap, Research Electronic Data Capture; STROBE, Strengthening the Reporting of Observational Studies in Epidemiology; CDC, Center for Disease Control and Prevention; SOFA, Sequential Organ Failure Assessment; APACHE II, Acute Physiology and Chronic Health disease Classification System II; NIMV, non-invasive mechanical ventilation; HFNC, high-flow nasal cannula; PEEP, positive end-expiratory pressure; CIF, cumulative incidence function; Q1, first quartile; Q3, third quartile; VIF, variance inflation factor.

* Corresponding authors at: Department of Pulmonary Medicine, Hospital Clinic of Barcelona, C/ Villarroya 170, 08036 Barcelona, Spain.

E-mail addresses: cilloniz@recerca.clinic.cat (C. Cilloniz), atorres@clinic.cat (A. Torres).

<https://doi.org/10.1016/j.pulmoe.2023.01.007>

2531-0437/© 2023 Sociedade Portuguesa de Pneumologia. Published by Elsevier España, S.L.U. This is an open access article under the CC BY-NC-ND license (<http://creativecommons.org/licenses/by-nc-nd/4.0/>).

ventilation and high-flow nasal cannula] and invasive mechanical ventilation [IMV]) between February 2020 and October 2021.

Results: Out of 5,090 critically-ill ventilated patients, 1,525 (27%) were aged ≥ 70 years (554 [36%] received NIRS and 971 [64%] received IMV. In the elderly group, median age was 74 years (interquartile range 72–77) and 68% were male. Overall in-hospital mortality was 31% (23% in patients < 70 years and 50% in those ≥ 70 years; $p < 0.001$). In-hospital mortality in the group ≥ 70 years significantly varied according to the modality of ventilation (40% in NIRS vs. 55% in IMV group; $p < 0.001$). Factors independently associated with in-hospital mortality in elderly ventilated patients were age (sHR 1.07 [95%CI 1.05–1.10], $p < 0.001$); previous admission within the last 30 days (sHR 1.40 [95%CI 1.04–1.89], $p = 0.027$); chronic heart disease (sHR 1.21 [95%CI 1.01–1.44], $p = 0.041$); chronic renal failure (sHR 1.43 [95%CI 1.12–1.82], $p = 0.005$); platelet count (sHR 0.98 [95% CI 0.98–0.99], $p < 0.001$); IMV at ICU admission (sHR 1.41 [95% CI 1.16–1.73], $p < 0.001$); and systemic steroids (sHR 0.61 [95%CI 0.48–0.77], $p < 0.001$).

Conclusions: Amongst critically-ill COVID-19 ventilated patients, those aged ≥ 70 years presented significantly higher rates of in-hospital mortality than younger patients. Increasing age, previous admission within the last 30 days, chronic heart disease, chronic renal failure, platelet count, IMV at ICU admission and systemic steroids (protective) all comprised independent factors for in-hospital mortality in elderly patients

© 2023 Sociedade Portuguesa de Pneumologia. Published by Elsevier España, S.L.U. This is an open access article under the CC BY-NC-ND license (<http://creativecommons.org/licenses/by-nc-nd/4.0/>).

Introduction

By 5 September 2022, the COVID-19 pandemic saw 615 million confirmed cases and had claimed the lives of more than 6.5 million people globally.¹ Underlying medical conditions and older age have been identified as strong predictors of death in patients with COVID-19 in general population.² Analyzing data from 540,667 adults hospitalized with COVID-19, Kompaniyets et al. reported that underlying medical conditions such as obesity, diabetes with complications, chronic cardiovascular disease and chronic lung disease had the strongest association with death especially in elderly patients (≥ 70 years old) in overall population.³ The higher likelihood of presenting poor outcomes amongst elderly patients also appears to apply to those with severe COVID-19 requiring intensive care unit (ICU) admission.^{4,5} A recent systematic review and meta-analysis pooling data from 57,000 COVID-19 patients that required mechanical ventilation, reported an overall case-fatality rate of 45% (95% CI: 39–52%), which increased according to age group, being 84% (95% Confidential Interval (CI): 83.3–85.4%) in patients over 80 years.⁶ A multicenter cohort study from Japan reported that the mortality rates in patients received invasive mechanical ventilation (IMV) were 8.6%, 20.7%, 34.9%, 49.7% and 83.3% for patients in the age group 50, 60, 70, 80, and 90 years old, respectively. The multivariable analysis showed that the odds ratio of death was 7 times higher in patients aged 70 years old (OR, 6.92. 95% CI 4.23 to 11.31; $p < 0.01$), 13 times higher in patients aged 80 years old (OR, 13.17, 95% CI 7.21 to 24.06; $p < 0.01$), and 92 times higher in patients aged 90 years old (OR, 92.63, 95% CI 16.66 to 514.98; $p < 0.01$), compared with those aged < 60 years.⁷ However, available evidence on critically-ill elderly patients with COVID-19 admitted to the ICU needing mechanical ventilation (non-invasive and invasive ventilation) is widely variable across countries and some relevant

aspects regarding management and prognosis remain poorly known.

We hypothesized that crude mortality of very elderly mechanically-ventilated COVID-19 patients was higher and the risk factors different as compared to those of younger patients. Thus, we aimed to assess the clinical characteristics, therapy, management, complications and risk factors associated with mortality amongst critically ill elderly patients with COVID-19 who were admitted to ICU and received non-invasive respiratory support (NIRS) and/or IMV at hospital and ICU admission.

Methods

Study design and patients

We retrospectively analysed patients from the CIBERESUCI-COVID study (NCT04457505),^{8,9} which had prospectively included patients aged ≥ 18 years with laboratory-confirmed SARS-CoV-2 infection from across 55 Spanish hospitals between 5 February 2020 and 7 October 2021 (participating sites are listed in the S-Table 1 in the Supplementary Material). All consecutive patients admitted to ICU were enrolled if the reason for admission was COVID-19. Exclusion criteria for patients included: (1) unconfirmed SARS-CoV-2 infection; (2) lack of data at baseline or hospital discharge; (3) lack of information about age; (4) lack of data about ventilation requirement or conventional oxygen therapy at hospital and ICU admission. The study received first approval by Hospital Clínic of Barcelona, Spain IRB (Comité Étíc d'Investigació Clínica, registry number HCB/2020/0370), and ulterior approval by local IRBs in the rest of participating hospitals. Either patients or their relatives provided informed consent. De-identified data were collected and stored in Research Electronic Data Capture (REDCap). Trained local researchers incorporated data from patients' medical records into a separate database. Prior to statistical analyses, three

independent and experienced data collectors trained in critical care (PC, AM, CS) reviewed the data; in cases of query, site investigators were contacted. Missing analyses were performed, and site investigators were approached to obtain as much reliable and complete data as possible. Results are reported in accordance with the Strengthening the Reporting of Observational Studies in Epidemiology (STROBE) guidelines.¹⁰

Data collection

We recorded data on demographics, comorbidities, illness severity and organ damage (APACHE-II and SOFA scores), and previous treatment. Standard laboratory and clinical data were collected at hospital and ICU admission. Data on pharmacologic treatments and non-pharmacological interventions during index admission were collected. Main complications during hospital stay, including pulmonary complications (acute respiratory distress syndrome-ARDS); septic shock, bacteraemia, hyperglycaemia, nosocomial infections, thromboembolic events, gastrointestinal bleeding, acute kidney injury and acute hepatic failure were also collected.

Primary and secondary outcomes

The primary outcome was in-hospital mortality. Secondary outcomes included length of ventilation, recovery from ICU admission, ICU-mortality, 90-day mortality, lengths of ICU and hospital stay.

Definitions

Patients were divided in two groups: 1.- Patients that received non-invasive respiratory support (NIRS) which included patients that received non-invasive mechanical ventilation (NIMV) and/or high-flow nasal cannula (HFNC) at the ICU admission, and 2.- Patients that received invasive mechanical ventilation (IMV) at the ICU admission. Patients who received NIRS before but needed intubation at the ICU admission were included in the IMV group. The start dates of the first respiratory support with NIRS or IMV were recorded whether it was provided in the general ward or in the ICU. Length of ICU and hospital stay was calculated from ICU admission and hospitalization, respectively. Nosocomial pneumonia was defined according to international guidelines.¹¹ Hyperglycaemia was defined as a consistent blood glucose level above 126 mg/dL. Hemorrhage referred to any type of clinically significant bleeding. Further details are reported in a previous publication.¹² Driving pressure was defined as plateau pressure minus plateau pressure (PEEP). Static compliance of the respiratory system was calculated as tidal volume/ (plateau pressure – PEEP). Ventilatory ratio was calculated as follows: (minute ventilation × PaCO₂) – (PBW × 100 × 37.5).

Statistical analysis

We report the number and percentage of patients as categorical variables, and the median (first quartile [Q1]; third quartile [Q3]) as continuous variables. Categorical variables were compared using the chi-squared test or Fisher's exact

test, whereas continuous variables were compared using the nonparametric Mann-Whitney U test.

First, we compared patients according to age group (<70 years and ≥70 years). Then, a comparison of patients according to study group (i.e., NIRS and IMV) in patients aged ≥70 years was performed. We also explored the clinical characteristics and outcomes in the subgroup of patients aged 80 years and older.

To describe in-hospital mortality, we utilized a competing risk model,¹³ considering recovery (i.e., discharge from hospital) as competing risk for mortality. First, we obtained the estimate of the cumulative incidence function (CIF) for the marginal probability of in-hospital mortality and recovery. Gray's test was used to compare equality of cumulative incidence curves across groups.¹⁴ To explore the risk factors associated with in-hospital mortality, a Fine-Gray competing risks model stratified on the center variable was used. A list of candidate predictors was established a priori based on previous findings and clinical constraints: age, sex, previous 30 days admission, chronic heart disease, chronic lung disease, chronic renal failure, confusion; the following parameters at ICU admission: APACHE-II score, SOFA score, PaO₂/FiO₂ ratio, pH, lymphocyte count, platelet count, D-dimers, C-reactive protein, serum creatinine, ferritin, septic shock, MV, and vasopressor treatment, continuous neuromuscular blockers, corticosteroids administered during ICU admission, and COVID-19 wave. Single collinearity was evaluated using the Pearson correlation (*r*) and multicollinearity was examined by means of the variance inflation factor (VIF). Several variables were excluded from the analysis due to collinearity (see Supplementary Material). Sub-distribution hazard ratios (sHRs) and their 95% confidence intervals (CIs) were calculated. The proportional hazards assumption was checked by an evaluation of the Schoenfeld residuals, as shown in Supplementary S-Figure 1. Patients who were transferred to another hospital were censored in the survival analyses. We used the multiple imputation method¹⁵ for missing data in the multivariable analysis (S-Table 1).

The level of significance was set at 0.05 (two-tailed). All analyses were performed using IBM SPSS version 26.0 (IBM Corp., Armonk, NY, USA) and R version 4.1.1 (R Foundation for Statistical Computing, Vienna, Austria).

Results

Description of the cohort

5090 patients requiring ventilation due to COVID-19 were enrolled in the CIBERESUCICOVID dataset (55 Spanish ICUs) from February 2020 to October 2021. The comparison of characteristics and outcomes between patients aged <70 years and those aged ≥70 years are summarized in S-Tables 2-4 and S-Figures 2-3. Remarkably, 3565 (63%) were aged <70 years (1529 [43%] received NIRS and 2036 [57%] received IMV) and 1525 (27%) were aged ≥70 years (554 [36%] received NIRS and 971 [64%] received IMV) (Fig. 1). Overall in-hospital mortality was 31% (23% in patients <70 years and 50% in those ≥70 years; *p*<0.001).

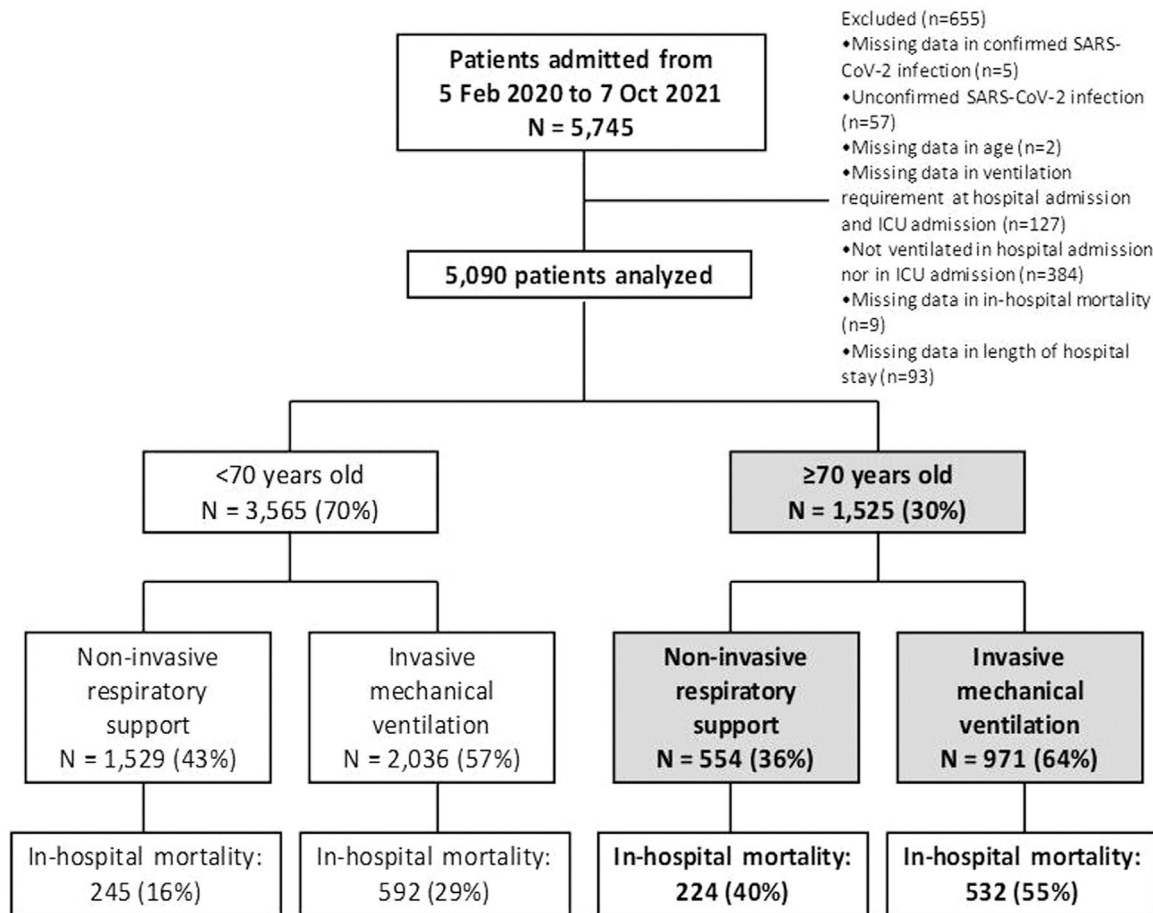


Fig. 1 Flow diagram of the study population.

Mechanical ventilation modality in patients ≥ 70 years

The overall baseline characteristics and ventilation features in patients aged ≥ 70 years and the comparison between the group receiving NIRS and IMV are shown in Table 1. Notably, patients received NIRS presented higher proportion of patients aged ≥ 80 years old, have higher rate of chronic lung disease, chronic renal disease and immunosuppression than patients received IMV. They also presented longer day from hospital admission to ICU admission, lower rate of septic shock, lower levels of CRP, D-dimer, neutrophils-lymphocytes ratio and lower SOFA score compared with patients who received IMV.

Main interventions and treatments are displayed in Table 2

Table 3 shows the complications and outcomes according to the type of MV in patients ≥ 70 years. Medians for ICU and hospital length of stay were 17 (9; 30) and 26 (16; 44) days for NIRS and IMV respectively. The mortality rate of patients that failed to NIRS and required IMV was 52% (149/288), whereas the mortality rate of patients that only required NIRS was 26% (55/214). ICU, in-hospital and 90-day mortality rates were 46%, 50% and 52% respectively, in all three cases being significantly higher in the IMV subgroup. The main

cause of in-hospital mortality in IMV group was multi-organic failure (41%), while, respiratory failure was the main cause of death in NIRS group (51%). The CIF curves for in-hospital mortality and recovery are depicted in Fig. 2A. Furthermore, the CIF curves show that patients with IMV had a higher likelihood of death ($p < 0.001$) than patients with NIRS, and patients with NIRS had a higher likelihood of recovery ($p < 0.001$) than patients with IMV (Fig. 2B).

The characteristics of patients aged ≥ 70 years that survived the index admission vs. those of patients who died are shown in S-Tables 5 to 7. In-hospital mortality significantly increased per 5-year blocks age groups ($p < 0.001$) (Fig. 3A). Meanwhile, there was a decreasing trend in in-hospital mortality across COVID-19 waves ($p = 0.006$) (Fig. 3B).

Sub-analysis of patients ≥ 80 years

There were 136 patients ≥ 80 years old, of these 84 (62%) patients received NIRS (28 with initial NIRS, required IMV during hospitalization) and 52 (38%) received IMV. Median APACHE II and SOFA scores were 14 (12; 17) and 4 (4; 7), respectively (S-Table 8). Interestingly, prone position was implemented in 35% of patients and renal replacement therapy was used in 7% of patients (4% in NIRS and 12% in IMV patients; $p = 0.085$) (S-Table 9). The mortality rate of patients that failed to NIRS and required IMV was 61% (17/28), whereas the mortality rate of patients that only

Table 1 Demographic and clinical characteristics of the study population ≥ 70 years old by type of respiratory support.^a

Variables	All patients (N = 1525)	Non-invasive respiratory support (N = 554)	Invasive mechanical ventilation (N = 971)	p-value
Age, median (Q1; Q3), years	74 (72; 77)	74 (72; 78)	74 (72; 76)	0.055
Age ≥ 80 years, n (%)	136 (9)	84 (15)	52 (5)	<0.001
Male sex, n (%)	1037 (68)	372 (67)	665 (69)	0.639
BMI, median (Q1; Q3), kg/m ²	27.8 (25.5; 31.1)	28 (25.3; 31)	27.8 (25.6; 31.1)	0.810
BMI, n (%)				0.679
Underweight (<18.5 kg/m ²)	8 (1)	4 (1)	4 (0.5)	–
Normal weight (≥ 18.5 - <25 kg/m ²)	268 (20)	103 (22)	165 (20)	–
Pre-Obese (≥ 25 - <30 kg/m ²)	636 (48)	227 (47)	409 (48)	–
Obese (≥ 30 kg/m ²)	410 (31)	144 (30)	266 (32)	–
Comorbidities, n (%)				
Active smoker	60 (4)	20 (4)	40 (5)	0.535
Hypertension	1063 (70)	385 (69)	678 (70)	0.869
Diabetes mellitus	501 (33)	187 (34)	314 (32)	0.571
Dyslipidemia	561 (37)	206 (37)	355 (37)	0.822
Chronic heart disease	330 (22)	134 (24)	196 (20)	0.069
Chronic liver disease	44 (3)	13 (2)	31 (3)	0.343
Chronic lung disease	273 (18)	116 (21)	157 (16)	0.019
Chronic renal failure	157 (10)	74 (13)	83 (9)	0.003
Immunosuppression	51 (3)	31 (6)	20 (2)	<0.001
Nursing-home, n (%)	39 (3)	19 (3)	20 (2)	0.117
Previous 30 days admission, n (%)	69 (5)	28 (5)	41 (4)	0.450
Days from first symptoms to hospital admission, median (Q1; Q3)	7 (4; 9)	6 (4; 9)	7 (4; 9)	0.692
Days from hospital admission to ICU admission, median (Q1; Q3)	2 (0; 4)	2 (0; 5)	2 (0; 4)	0.002
Symptoms at hospital admission, n (%)				
Fever	1168 (78)	417 (76)	751 (79)	0.120
Dry cough	871 (58)	312 (57)	559 (59)	0.461
Productive cough	219 (15)	82 (15)	137 (14)	0.781
Dyspnoea	1043 (69)	373 (68)	670 (70)	0.309
Fatigue	629 (42)	232 (42)	397 (42)	0.899
Muscle pain	381 (26)	134 (25)	247 (26)	0.485
Diarrhoea	277 (18)	99 (18)	178 (19)	0.746
Confusion	107 (7)	24 (4)	83 (9)	0.002
Characteristics on ICU admission				
Glasgow Coma Scale, median (Q1; Q3)	15 (15; 15)	15 (15; 15)	15 (14; 15)	<0.001
APACHE-II score, median (Q1; Q3)	14 (12; 18)	13 (11; 15)	15 (12; 21)	<0.001
APACHE-II APS component, median (Q1; Q3)	8 (6; 12)	7 (5; 9)	10 (6; 15)	<0.001
SOFA score, median (Q1; Q3)	5 (4; 8)	4 (3; 5)	7 (4; 8)	<0.001
SOFA hemodynamic component, median (Q1; Q3)	0 (0; 4)	0 (0; 0)	4 (0; 4)	<0.001
SOFA renal component, median (Q1; Q3)	0 (0, 1)	0 (0, 0)	0 (0, 1)	0.005
Temperature, median (Q1; Q3), °C	36.5 (36; 37.3)	36.5 (36; 37.1)	36.6 (36; 37.5)	0.020
Respiratory rate, median (Q1; Q3), breaths per min	25 (20; 30)	27 (23; 32)	24 (20; 30)	<0.001
Arterial blood gasses at ICU admission				
PaO ₂ /FiO ₂ ratio, median (Q1; Q3)	107.8 (79; 154.1)	96 (73.8; 141)	113.8 (82; 162)	<0.001
PaO ₂ /FiO ₂ ratio, n (%)				<0.001
Severe (<100)	553 (45)	202 (54)	351 (42)	<0.001
Moderate (≥ 100 - <200)	504 (41)	146 (39)	358 (42)	0.233
Mild (≥ 200 - <300)	126 (10)	20 (5)	106 (13)	<0.001
No ARDS (≥ 300)	39 (3)	9 (2)	30 (4)	0.285
pH, median (Q1; Q3)	7.40 (7.33; 7.45)	7.45 (7.41; 7.47)	7.36 (7.29; 7.43)	<0.001
PaCO ₂ , median (Q1; Q3), mmHg	40 (34; 47)	35.3 (32; 40)	42.7 (36; 50)	<0.001
Laboratory findings at ICU admission				
Haemoglobin, median (Q1; Q3), g/dL	13 (11.6; 14.2)	13.3 (11.8; 14.3)	13 (11.5; 14.1)	0.044
Leucocyte count, median (Q1; Q3), 10 ⁹ /L	9.5 (6.8; 13.1)	8.5 (6.1; 11.6)	10.1 (7.4; 13.9)	<0.001

Table 1 (Continued)

Variables	All patients (N = 1525)	Non-invasive respiratory support (N = 554)	Invasive mechanical ventilation (N = 971)	p-value
Lymphocyte count, median (Q1; Q3), 10 ⁹ /L	0.6 (0.4; 0.88)	0.62 (0.45; 0.9)	0.6 (0.4; 0.87)	0.040
Neutrophil count, median (Q1; Q3), 10 ⁹ /L	8.2 (5.6; 11.7)	7.3 (5.1; 10)	8.8 (6.1; 12.7)	<0.001
Neutrophil-to-lymphocyte ratio, median (Q1; Q3)	13 (7.8; 22)	11.1 (6.6; 18)	14.7 (8.8; 24.8)	<0.001
Monocyte count, median (Q1; Q3), 10 ⁹ /L	0.37 (0.2; 0.57)	0.34 (0.2; 0.55)	0.39 (0.21; 0.59)	0.096
Platelet count, median (Q1; Q3), 10 ⁹ /L	224 (172; 291)	220 (173; 293)	225 (172; 290)	0.713
D-dimers, median (Q1; Q3), ng/mL	1278 (697; 3800)	1049 (580; 2250)	1525 (780; 5131)	<0.001
Ferritin, median (Q1; Q3), ng/mL	1033 (578; 1714)	977 (528; 1643)	1095 (620; 1750)	0.256
C-reactive protein, median (Q1; Q3), mg/L	138 (69; 230)	109 (61; 197)	152 (73; 249)	<0.001
C-reactive protein ≥150 mg/L, n (%)	652 (46)	198 (38)	454 (51)	<0.001
C-reactive protein-to-lymphocyte ratio, median (Q1; Q3)	213 (92; 395)	174 (71; 343)	237 (106; 429)	<0.001
IL-6, median (Q1; Q3), pg/mL	94.2 (37; 202)	82 (27.5; 175.8)	105 (39.3; 222)	0.069
Serum creatinine, median (Q1; Q3), mg/dL	0.91 (0.71; 1.2)	0.86 (0.7; 1.12)	0.95 (0.73; 1.24)	0.001
LDH, median (Q1; Q3), U/L	485 (377; 657)	424 (342; 554)	540 (411; 709)	<0.001
Evolution of type of respiratory support, n (%) ^a				–
Non-invasive respiratory support at ICU admission & Conventional oxygen therapy at day 3 of ICU admission or end of MV	15 (1)	15 (3)	0 (0)	–
Non-invasive respiratory support at ICU admission & Non-invasive respiratory support at day 3 of ICU admission or end of MV	214 (14)	214 (41)	0 (0)	–
Non-invasive respiratory support at ICU admission & Invasive MV at day 3 of ICU admission or end of MV	288 (19)	288 (56)	0 (0)	–
Invasive MV at ICU admission & Conventional oxygen therapy, Non-invasive respiratory support or Invasive MV at day 3 or end of MV	971 (65)	0 (0)	971 (100)	–
Ventilatory setting and pulmonary mechanics at MV start				
Tidal volume/PBW, median (Q1; Q3), mL/kg	7.1 (6.4; 7.9)	6.9 (6.3; 7.8)	7.1 (6.5; 7.9)	0.024
Respiratory rate, median (Q1; Q3), breaths per min	20 (18; 24)	21 (18; 24)	20 (18; 24)	0.862
PEEP, median (Q1; Q3), cmH ₂ O	12 (10; 14)	12 (10; 14)	12 (10; 14)	0.064
FiO ₂ , median (Q1; Q3), %	80 (60; 100)	80 (60; 100)	80 (60; 100)	0.291
Peak inspiratory pressure, median (Q1; Q3), cmH ₂ O	31 (28; 35)	30 (28; 34)	31 (28; 35)	0.392
End-inspiratory plateau pressure, median (Q1; Q3), cmH ₂ O	24 (21; 28)	24 (21; 28)	25 (21; 28)	0.323
Driving pressure, median (Q1; Q3), cmH ₂ O ^b	12 (10; 15)	12 (9; 15)	12 (10; 15)	0.972
Compliance, median (Q1; Q3), mL/cmH ₂ O ^c	35.7 (28; 46.2)	35.2 (27.6; 43.3)	35.7 (28.2; 47.2)	0.443
Ventilatory ratio, median (Q1; Q3) ^d	1.69 (1.38; 2.12)	1.67 (1.37; 2.03)	1.7 (1.39; 2.15)	0.416
Position, n (%)				0.044
Supine	630 (62)	182 (87)	448 (60)	0.029
Prone	362 (36)	83 (31)	279 (37)	0.053
Lateral	12 (1)	4 (1)	8 (1)	0.529
Other	11 (1)	0 (0)	11 (1)	0.071
Septic shock at ICU admission ^e	125 (9)	6 (1)	119 (15)	<0.001

Abbreviations: ICU indicates intensive care unit; Q1, first quartile; Q3, third quartile; BMI, body mass index; APACHE, acute physiology and chronic health evaluation; APS, acute physiology score; SOFA, sequential organ failure assessment; PaO₂, partial pressure of arterial oxygen; FiO₂, fraction of inspired oxygen; LDH, lactate dehydrogenase; MV, mechanical ventilation. Percentages calculated on non-missing data. p-values marked in bold indicate numbers that are statistically significant on the 95% confidence limit.

^a Patients who received non-invasive respiratory support but needed intubation were included in the invasive mechanical ventilation group.

^b Defined as plateau pressure – PEEP.

^c Defined as tidal volume/(plateau pressure – PEEP).

^d Defined as (minute ventilation × PaCO₂) – (PBW × 100 × 37.5).

^e Criteria for the Sepsis-3 definition of septic shock include vasopressor treatment and a lactate concentration >2 mmol/L.

Table 2 Main interventions and treatments of the study population ≥ 70 years old by type of respiratory support.^a

Variables	All patients (N = 1525)	Non-invasive respiratory support (N = 554)	Invasive mechanical ventilation (N = 971)	p-value
COVID-19 therapies during ICU admission, n (%)				
Ribavirin	4 (0.3)	0 (0)	4 (0.4)	0.303
Lopinavir / ritonavir	659 (43)	146 (26)	513 (53)	<0.001
Remdesivir	229 (15)	127 (23)	102 (11)	<0.001
Interferon alpha	5 (0.3)	0 (0)	5 (1)	0.166
Interferon beta	322 (21)	58 (10)	264 (27)	<0.001
Chloroquine	54 (4)	18 (3)	36 (4)	0.641
Hydroxychloroquine	686 (45)	149 (27)	537 (55)	<0.001
Tocilizumab	574 (38)	213 (39)	361 (37)	0.625
Darunavir/cobicistat	27 (2)	6 (1)	21 (2)	0.124
Pharmacological adjunctive therapies during ICU admission				
Continuous furosemide, n (%)	775 (51)	224 (41)	551 (57)	<0.001
Immunoglobulins, n (%)	27 (2)	11 (2)	16 (2)	0.645
Subcutaneous heparin, n (%)	1357 (96)	504 (97)	853 (96)	0.162
≤ 1 mg/kg/day, n (%)	1065 (70)	428 (78)	637 (66)	<0.001
> 1 mg/kg/day, n (%)	497 (33)	174 (32)	323 (34)	0.426
Convalescent plasma, n (%)	47 (3)	27 (5)	20 (2)	0.002
Vasopressor treatment, n (%)	1161 (76)	271 (49)	890 (92)	<0.001
Continuous neuromuscular blockers, n (%)	1037 (68)	245 (44)	792 (82)	<0.001
Corticosteroid, n (%)	1300 (86)	509 (93)	791 (83)	<0.001
Length of treatment, median (Q1; Q3), days	10 (7; 13)	10 (7; 15)	10 (6; 13)	<0.001
Total equivalent dexamethasone dose, median (Q1; Q3), mg/day	15 (6; 29.4)	12.6 (6; 25.6)	15.8 (7.5; 33.8)	<0.001
Other adjunctive treatments during ICU admission				
Tracheostomy, n (%)	517 (34)	129 (23)	388 (40)	<0.001
Recruitment manoeuvres, n (%)	626 (43)	133 (25)	493 (53)	<0.001
Prone position, n (%)	971 (64)	249 (45)	722 (75)	<0.001
Prone length, median (Q1; Q3), hours	48 (24; 90)	48 (24; 96)	48 (24; 85)	0.764
ECMO support, n (%)	3 (0.2)	0 (0)	3 (0.3)	0.558
ECMO length, median (Q1; Q3), hours	25 (1; 49)	–	25 (1; 49)	–
Renal replacement therapy, n (%)	158 (10)	28 (5)	130 (13)	<0.001

Abbreviations: ICU indicates intensive care unit; Q1, first quartile; Q3, third quartile; ECMO, extracorporeal membrane oxygenation. Percentages calculated on non-missing data. p-values marked in bold indicate numbers that are statistically significant on the 95% confidence limit.

^a Patients who received non-invasive respiratory support but needed intubation were included in the invasive mechanical ventilation group.

required NIRS was 55% (24/44). Remarkably, ICU, in-hospital and 90-day mortality rates were 51%, 61% and 65% respectively; and respiratory failure (52% in the NIRS group vs. 43% in the IMV group) and multi-organic failure (33% in the NIRS group vs. 24% in the IMV group) were the main causes of in-hospital mortality without differences between groups. Medians for ICU and hospital length of stay were 13 (7; 23) and 29 (17; 45) days, respectively (S-Table 10).

Predictive factors for in-hospital mortality and recovery in patients aged ≥ 70 years

Results of the multivariable analysis are reported in Table 4. The following factors were associated with in-hospital

mortality: age, previous admission within the last 30 days, chronic heart disease, chronic renal failure, platelet count, MV, and corticosteroids. Firstly, with every year increase in age, the risk of death increased with 7% (sHR 1.07, 95% CI 1.05 to 1.10), and the chances of recovery decreased with 6% (sHR 0.94, 95% CI 0.91 to 0.96). In other words, if in two patients all variables except for age are the same, the patient who is one year older has a 7% higher risk of dying. Furthermore, patients with previous admission within the last 30 days had a 40% increased risk of death (sHR 1.40, 95% CI 1.04 to 1.89). Moreover, patients with chronic heart disease had a 21% increase in risk of death (sHR 1.21, 95% CI 1.01 to 1.44), while patients with chronic renal failure had a 43% increase in risk of death (sHR 1.43, 95% CI 1.12 to 1.82),

Table 3 Complications and outcome variables of the study population ≥ 70 years old by type of respiratory support.^a

Variables	All patients (N = 1525)	Non-invasive respiratory support (N = 554)	Invasive mechanical ventilation (N = 971)	p-value
Complications, n (%)				
Bacterial pneumonia ^b	481 (32)	140 (25)	341 (35)	<0.001
Pneumothorax	156 (10)	41 (7)	115 (12)	0.006
Pleural effusion	203 (13)	63 (11)	140 (14)	0.088
Organizing pneumonia	94 (6)	50 (9)	44 (5)	0.001
Tracheobronchitis	19 (1)	7 (1)	12 (1)	0.959
Pulmonary embolism	132 (9)	54 (10)	78 (8)	0.267
Cardiac injury ^c	266 (17)	80 (14)	186 (19)	0.018
Bacteraemia	444 (29)	116 (21)	328 (34)	<0.001
Stroke	32 (2)	7 (1)	25 (3)	0.084
Delirium	298 (20)	82 (15)	216 (22)	<0.001
Coagulation disorder ^d	399 (26)	146 (26)	253 (26)	0.903
Disseminated intravas- cular coagulation ^e	93 (24)	20 (14)	73 (30)	<0.001
Anaemia ^f	991 (65)	331 (60)	660 (68)	0.001
Rhabdomyolysis	58 (4)	19 (3)	39 (4)	0.564
Acute renal failure ^g	680 (45)	193 (35)	487 (50)	<0.001
Pancreatitis	15 (1)	3 (1)	12 (1)	0.187
Liver dysfunction	418 (27)	147 (27)	271 (28)	0.547
Hyperglycaemia	1054 (69)	375 (68)	679 (70)	0.333
Haemorrhage	149 (10)	44 (8)	105 (11)	0.067
Outcomes				
Length of hospital stay, median (Q1; Q3), days				
All patients	26 (16; 44)	22 (15; 41)	27 (16; 47)	0.002
Surviving patients	37 (21; 59)	27.5 (17; 46)	43 (28; 68)	<0.001
Length of ICU stay, median (Q1; Q3), days				
All patients	17 (9; 30)	12 (6; 26)	19 (11; 32)	<0.001
Surviving patients	18 (10; 37)	12 (6; 27)	25 (13; 42)	<0.001
Invasive mechanical ven- tilation length, median (Q1; Q3), days	16 (9; 28)	16 (9; 31)	16 (9; 27)	0.550
In-hospital mortality, n (%)	756 (50)	224 (40)	532 (55)	<0.001
ICU mortality, n (%)	708 (46)	211 (38)	497 (51)	<0.001
90-day mortality, n (%) ^h	757 (52)	231 (44)	526 (57)	<0.001
Ventilator free days, median (Q1; Q3)	0 (0; 6)	0 (0; 5)	0 (0; 6)	0.176
ICU free days, median (Q1; Q3)	0 (0; 10)	0 (0; 18)	0 (0; 1)	<0.001

Abbreviations: ICU indicates intensive care unit; Q1, first quartile; Q3, third quartile. Percentages calculated on non-missing data. *p*-values marked in bold indicate numbers that are statistically significant on the 95% confidence limit.

^a Patients who received non-invasive respiratory support but needed intubation were included in the invasive mechanical ventilation group.

^b Clinically or radiologically diagnosed bacterial pneumonia managed with antimicrobials. Bacteriological confirmation was not required.

^c Cardiac injury include cardiac arrest, myocardial infarction, endocarditis, myocarditis/pericarditis, cardiomyopathy, heart failure and cardiac ischemia.

^d Abnormal coagulation was identified by abnormal prothrombin time or activated partial thromboplastin time.

^e Disseminated intravascular coagulation was defined by thrombocytopenia, prolonged prothrombin time, low fibrinogen, elevated D-dimer and thrombotic microangiopathy.

^f Hemoglobin consistently below 120 g/L for non-pregnant women and 130 g/L for men.

^g Acute renal injury was defined as an increase in serum creatinine by ≥ 0.3 mg/dL within 48 h or an increase in serum creatinine to ≥ 1.5 times baseline.

^h Calculated only for patients with 90-day follow-up (526 in the non-invasive respiratory support group and 921 in the invasive mechanical ventilation group).

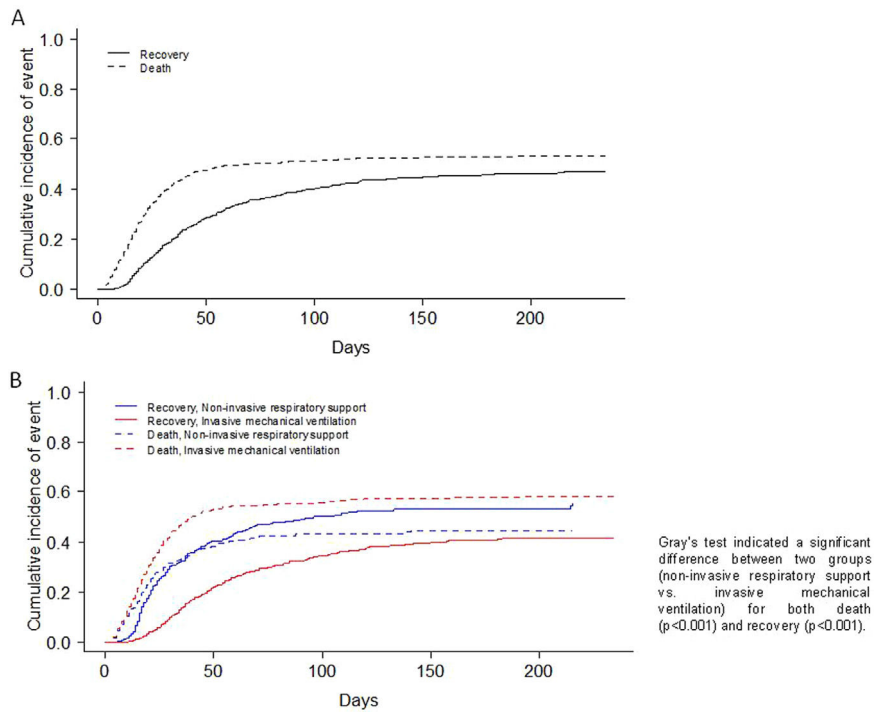


Fig. 2 Cumulative incidence plot of in-hospital mortality and recovery in the overall population of patients ≥ 70 years old ($N = 1525$) (A) and according to type of respiratory support group (B).

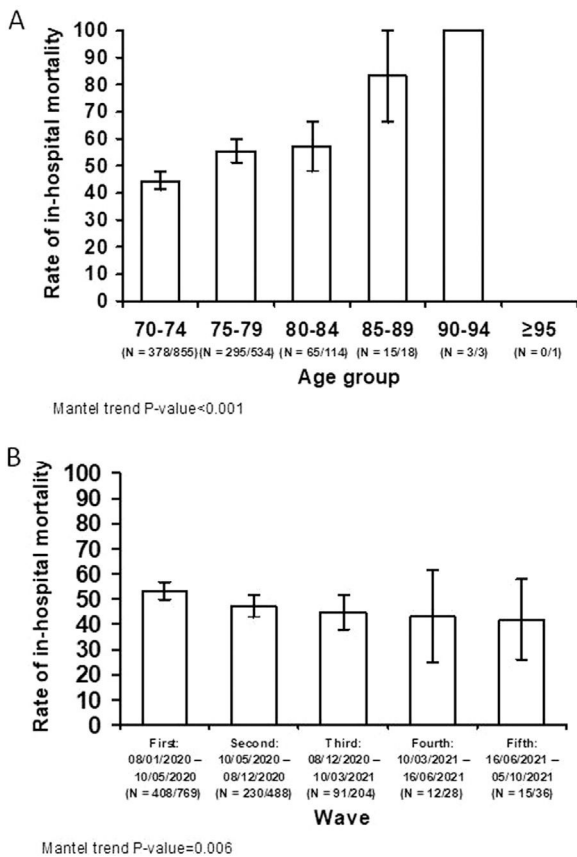


Fig. 3 In-hospital mortality per age group (A), and during the five COVID-19 pandemic waves (B). Study population ≥ 70 years old ($N = 1525$).

and 33% decrease in chances of recovery (sHR 0.67, 95% CI 0.49 to 0.92). In terms of arterial blood gasses, a ten-fold increase in APACHE-II score at ICU admission, the risk of death increased 1% (sHR 1.01, 95% CI 1.00 to 1.03). In terms of laboratory parameters, a ten-fold increase in platelet count at ICU admission was associated with a 2% decrease in risk of death (sHR 0.98, 95% CI 0.98 to 0.99), and a 2% increase in chances of recovery (sHR 1.02, 95% CI 1.01 to 1.03). Moreover, patients with IMV at ICU admission had a 41% increase in risk of death (sHR 1.41, 95% CI 1.16 to 1.73), and 42% decrease in chances of recovery (sHR 0.58, 95% CI 0.47 to 0.72). Finally, patients that used corticosteroids had a 39% decrease in the risk of death (sHR 0.61, 95% CI 0.48 to 0.77).

Discussion

In a cohort of 5090 critically ill patients admitted to 55 Spanish ICUs for severe COVID-19 we found: 1) 30% of the overall cohort were aged ≥ 70 years old, and this group presented significantly higher rates of in-hospital mortality rates than younger patients; 2) patients aged ≥ 70 years receiving IMV presented significantly worse outcomes than those receiving NIRS; and 3) risk factors for in-hospital mortality in patients aged ≥ 70 years included increasing age, previous 30 days admission, chronic cardiovascular disease and chronic renal failure as baseline variables, and platelet count and IMV as ICU-related variables, whereas corticosteroid therapy conferred a beneficial effect on in-hospital mortality.

Mortality of critically-ill patients with COVID-19 varies widely across countries worldwide ranging from 30% to 80%, being highest in ventilated patients.^{16–20} The high mortality

Table 4 Multivariable model assessing predictors of in-hospital mortality and recovery of the study population ≥ 70 years old ($N = 1525$).

Variables	In-hospital mortality		Recovery	
	sHR (95% CI)	<i>p</i> -value	sHR (95% CI)	<i>p</i> -value
Age (+1 year) ^a	1.07 (1.05 to 1.10)	<0.001	0.94 (0.91 to 0.96)	<0.001
Male sex	0.89 (0.75 to 1.06)	0.18	1.14 (0.95 to 1.37)	0.17
Previous 30 days admission	1.40 (1.04 to 1.89)	0.027	0.77 (0.48 to 1.25)	0.29
Chronic heart disease	1.21 (1.01 to 1.44)	0.041	0.80 (0.63 to 1.00)	0.054
Chronic lung disease	1.16 (0.95 to 1.41)	0.14	0.96 (0.76 to 1.21)	0.74
Chronic renal failure	1.43 (1.12 to 1.82)	0.005	0.67 (0.49 to 0.92)	0.014
Confusion	1.19 (0.90 to 1.57)	0.23	0.81 (0.56 to 1.15)	0.23
APACHE-II score at ICU admission (+1) ^a	1.01 (1.00 to 1.03)	0.063	0.99 (0.98 to 1.01)	0.39
PaO ₂ /FiO ₂ ratio at ICU admission (+10) ^b	1.00 (0.98 to 1.01)	0.47	1.01 (1.00 to 1.03)	0.037
Lymphocyte count at ICU admission (+1 × 10 ⁹ /L) ^a	0.92 (0.83 to 1.03)	0.14	1.07 (0.95 to 1.20)	0.25
Platelet count at ICU admission (+10 × 10 ⁹ /L) ^b	0.98 (0.98 to 0.99)	<0.001	1.02 (1.01 to 1.03)	<0.001
D-dimers at ICU admission (+1000 ng/mL) ^c	1.00 (1.00 to 1.01)	0.54	0.99 (0.98 to 1.00)	0.056
Ferritin at ICU admission (+1000 ng/mL) ^c	1.01 (0.98 to 1.04)	0.59	0.96 (0.89 to 1.04)	0.34
C-reactive protein at ICU admission (+10 mg/L) ^b	1.00 (1.00 to 1.01)	0.31	0.99 (0.98 to 1.00)	0.056
Septic shock at ICU admission ^d	1.15 (0.93 to 1.41)	0.19	0.83 (0.64 to 1.09)	0.18
Invasive mechanical ventilation at ICU admission	1.41 (1.16 to 1.73)	<0.001	0.58 (0.47 to 0.72)	<0.001
Corticosteroids	0.61 (0.48 to 0.77)	<0.001	1.15 (0.85 to 1.56)	0.35

Abbreviations: sHR indicates subdistribution hazard ratio; CI, confidence interval; APACHE, acute physiology and chronic health evaluation; ICU, intensive care unit; PaO₂, partial pressure of arterial oxygen; FiO₂, fraction of inspired oxygen. Data are shown as estimated HRs (95% CIs) of the explanatory variables in the in-hospital mortality group and the recovery group. Fine-Gray competing risks model stratified on the center variable and adjusted by COVID-19 wave. The *p*-value is based on the null hypothesis that all HRs relating to an explanatory variable equal unity (no effect).

^a “+1” means a one-unit increase on the scale in the predictor variable (i.e., going from 1 to 2, 2 to 3, etc.).

^b “+10” means a ten-unit increase on the scale in the predictor variable (i.e., going from 10 to 20, 20 to 30, etc.).

^c “+1000” means a one thousand-unit increase on the scale in the predictor variable (i.e., going from 1000 to 2000, 2000 to 3000, etc.).

^d Criteria for the Sepsis-3 definition of septic shock include vasopressor treatment and a lactate concentration >2 mmol/L.

rate observed in our study is consistent with studies from various countries, in which older age and underlying frailty were identified as risk factors strongly associated with severe COVID-19 infection.^{3,16,21–25} A report on COVID-19-related deaths issued by the CDC showed that the mortality rate in individuals aged ≥ 65 years was more than 65-fold times higher than that in patients aged 18–29 years.²¹ Similarly, individuals with underlying medical conditions such as chronic renal or heart failure have increased risk of severe COVID-19 and mortality.²⁶ Nevertheless, the limitation of life-sustaining treatments, which was more frequent in older and more severe patients, may hugely influence this high crude mortality.²⁷ Moreover, meta-analyses had previously found lower platelet counts being associated with an increased risk of in-hospital mortality in overall population.^{28,29}

Several studies have shown that increasing age is associated with a lower likelihood of being intubated in critically-ill COVID-19 elderly patients.^{23,30–35} Interestingly, a meta-analysis comprising 21 studies with a combined population of 37,359 patients with COVID-19 (5800 receiving IMV) from 7 countries did not find an association between increasing age and the likelihood of receiving IMV, yet in line with our findings decreasing mortality rates amongst ventilated patients across waves were found.³³ Another recent posthoc analysis of the PRoVENT-COVID study showed that in a cohort of invasively ventilated critically ill COVID-19 patients, age

had no effect on ventilator management. However greater age was associated with more complications and higher mortality.²³ It is also worth mentioning that prior studies found much higher mortality rates in ventilated elderly patients. In a recent meta-analysis pooling data from 57,000 COVID-19 patients that required mechanical ventilation, the overall case-fatality rate was 45% (95% CI: 39–52%), which increased according to age group, being 84% (95% CI: 83.3–85.4%) in patients over 80 years.⁶ Andrei and colleagues found even higher mortality rates in patients very elderly ventilated patients with COVID-19, as in 1666 patients with a median age of 83 years ICU mortality was 78%, reaching 97% amongst those receiving mechanical ventilation.³⁴ In a prospective cohort of 3,719 severe CAP patients (mean age of 70 years old) from Spain previous to the COVID-19 pandemic,³⁵ the authors reported a higher 30-day mortality in mechanical ventilated patients compared with patients received non-invasive ventilation (33% vs. 18%, $p < 0.001$). They also reported that IMV was an independently predicted of 30-day mortality in patients with severe CAP. Meanwhile, in-hospital mortality was 61% amongst patients ≥ 80 years in our study, and although the difference did not reach statistical significance, patients receiving NIRS presented a notably lower mortality rate than those receiving IMV (55% vs. 71%, $p = 0.057$).

A major strength of our study is the large multicentre nature, the consecutive inclusion of all patients from each

center, and the detailed information on ICU-related features provide great value for all healthcare professionals treating COVID-19 in the setting of critically ill patients. On the other hand, our findings are constrained by a lack of sub-analyses assessing the impact of the type of steroid, time of initiation, dosing and length of treatment. Limitations of our study include different waves of the pandemic (S-Table 11), which could have influenced our results. We have however adjusted our multivariable analysis for this confounder. We also do not have data on restrictions of care, and not systematically collected the time point in which patients transitioned from one ventilation modality to another. Finally, as we examined real-world data, limitations associated to the observational nature and missing data should be considered.

In conclusion, patients aged ≥ 70 years constituted a significant proportion of ventilated patients with COVID-19 across 55 Spanish ICUs, presenting high mortality rates. Age, previous admission within the last 30 days, chronic heart disease, chronic renal failure, platelet count, IMV at ICU admission and systemic steroids (protective) were independent factors associated with in-hospital mortality in critically ill patients aged ≥ 70 years. Administering systemic steroids could have beneficial effects on in-hospital mortality.

Author contributions

Study concept and design: CC, AM, AT; data collection: CC, AM, AP, TC, AC statistical analysis: AG; analysis and interpretation of data: CC, AM, JP, TC, AT; drafting of the manuscript: CC, AM, JP, AT; critical revision of the manuscript for important intellectual content: CC, AM, JP, and AT; and study supervision: AT. AT had full access to all the data in the study and takes responsibility for the integrity of the data and the accuracy of the data analysis. All authors read and approved the final manuscript. CiberesUCICOVID consortium participated in data collection.

Availability of data and materials

The datasets used and/or analysed during the current study are available from the corresponding author on reasonable request.

Declaration Competing Interests

The authors declare that they have no competing interests.

Acknowledgments

We are indebted to all participating medical and nursing colleagues for their assistance and cooperation in this study.

CIBERESUCICOVID Project Investigators: Víctor D. Gumucio-Sanguino, Rafael Mañez: Hospital Universitario de Bellvitge, Barcelona. Jordi Solé-Violan, Felipe Rodríguez de Castro: Hospital Dr. Negrín, Las Palmas. Fernando Suarez-Sipmann: Hospital Universitario La Princesa, Madrid. Ruth Noemí Jorge García, María Mora Aznar: Hospital Nuestra Señora de Gracia, Zaragoza. Mateu Torres, María Martínez,

Cynthia Alegre, Jordi Riera, Sofía Contreras: Hospital Universitario Vall d'Hebron, Barcelona. Jesús Caballero, Javier Trujillano, Montse Vallverdú, Miguel León, Mariona Badía, Begoña Balsera, Lluís Servià, Judit Vilanova, Silvia Rodríguez, Neus Montserrat, Silvia Iglesias, Javier Prados, Sula Carvalho, Mar Miralbés, Josman Monclou, Gabriel Jiménez, Jordi Codina, Estela Val, Pablo Pagliarani, Jorge Rubio, Dulce Morales, Andrés Pujol, Àngels Furro, Beatriz García, Gerard Torres, Javier Vengoechea, David de Gonzalo-Calvo, Jessica González, Silvia Gomez: Hospital Universitario Arnau de Vilanova, Lleida. José M. Gómez: Hospital General Universitario Gregorio Marañón, Madrid. Nieves Franco: Hospital Universitario de Móstoles, Madrid. José Barberán: Hospital Universitario HM Montepríncipe. Guillermo M Albaiceta, Lorena Forcelledo Espina, Emilio García Prieto, Paula Martín Vicente, Cecilia del Busto Martínez: Hospital Universitario Central de Asturias, Oviedo. Pablo Vidal: Complejo Hospitalario Universitario de Ourense, Ourense. José Luis García Garmendia, María Aguilar Cabello, Carmen Eulalia Martínez Fernández: Hospital San Juan de Dios del Aljarafe, Sevilla. Nieves Carbonell, María Luisa Blasco Cortés, Ainhoa Serrano Lázaro, Mar Juan Díaz: Hospital Clínic Universitari de València, Valencia. Aaron Blandino Ortiz: Hospital Universitario Ramón y Cajal, Madrid. Rosario Menendez: Hospital La Fe de Valencia. Luis Jorge Valdivia: Hospital Universitario de León, León. María Victoria Boado: Hospital Universitario de Cruces, Barakaldo. Susana Sancho Chinesta: Hospital Universitario y Politécnico La Fe, Valencia. Maria del Carmen de la Torre: Hospital de Mataro. Ignacio Martínez Varela, María Teresa Bouza Vieiro, Inés Esmoris Arijón: Hospital Universitario Lucus Augusti, Lugo. David Campi Hermoso., Rafaela Nogueiras Salinas., Teresa Farre Monjo., Ramon Nogue Bou., Gregorio Marco Naya., Carme Barberà, Núria Ramon Coll: Hospital Universitari de Santa Maria, Lleida. Mercedes Catalán-González, Juan Carlos Montejo-González: Hospital Universitario 12 de Octubre, Madrid. Gloria Renedo Sanchez-Giron, Juan Bustamante-Munguira, Elena Bustamante-Munguira, Ramon Cicuendez Avila, Nuria Mamolar Herrera: Hospital Clínico Universitario, Valladolid. Raquel Almansa: Instituto de Investigación Biomédica de Salamanca (IBSAL). Víctor Sagredo: Hospital Universitario de Salamanca, Salamanca. Jose Añon, Alexander Agrifoglio, Lucia Cachafeiro, Emilio Maseda: Hospital Universitario La Paz-Carlos III, Madrid. Lorenzo Socias, Mariana Andrea Novo, Albert Figueras, Maria Teresa Janer, Laura Soliva, Marta Ocón, Luisa Clar, J Ignacio Ayestarán: Hospital Universitario Son Espases, Palma de Mallorca. Yhivian Peñasco, Sandra Campos Fernández: Hospital Universitario Marqués de Valdecilla, Santander. Mireia Serra-Fortuny, Eva Forcadell-Ferreres, Immaculada Salvador-Adell, Neus Bofill, Berta Adell-Serrano, Josep Pedregosa Díaz, Núria Casacuberta-Barberà, Luis Urrelo-Cerrón, Àngels Piñol-Tena, Ferran Roche-Campo: Hospital Verge de la Cinta de Tortosa, Tortosa. Amalia Martínez de la Gándara, Pablo Ryan Murúa, Covadonga Rodríguez Ruíz, Laura Carrión García, Juan I Lazo Álvarez: Hospital Universitario Infanta Leonor, Madrid. José Ángel Lorente: Hospital Universitario de Getafe. Ana Loza-Vázquez, Desire Macias Guerrero: Hospital Universitario Virgen de Valme, Sevilla. Arturo Huerta, Daniel Tognetti: Clínica Sagrada Familia, Barcelona. Carlos García Redruello, David Mosquera Rodríguez, Eva María Menor Fernández, Sabela Vara Adrio, Vanesa Gómez Casal, Marta Segura Pensado, María Digna

Rivas Vilas, Amaia García Sagastume: Hospital de Vigo, Vigo. Raul de Pablo Sánchez, David Pestaña Laguna, Tommaso Bardi: Hospital Universitario Ramón y Cajal, Madrid. Rosario Amaya Villar, Carmen Gómez Gonzalez, María Luisa Gascón Castillo: Hospital Universitario Virgen del Rocío, Sevilla. José Garnacho-Montero, María Luisa Cantón-Bulnes: Hospital Universitario Virgen Macarena, Sevilla. Judith Marin-Corral, Cristina Carbajales Pérez: Hospital Álvaro Cunqueiro, Vigo. Joan Ramon Masclans, Ana Salazar Degracia, Judit Bigas, Rosana Muñoz-Bermúdez, Clara Vilà-Vilardel, Francisco Parrilla, Irene Dot, Ana Zapatero, Yolanda Díaz, María Pilar Gracia, Purificación Pérez, Andrea Castellví, Cristina Climent: Hospital del Mar, Barcelona. Lidia Serra, Laura Barbena, Iosune Cano: Consorci Sanitari del Maresme, Barcelona. Pilar Ricart, Alba Herraiz, Pilar Marcos, Laura Rodríguez, María Teresa Sariñena, Ana Sánchez: Hospital Universitari Germans Trias i Pujol, Badalona. Alejandro Úbeda: Hospital Punta de Europa, Algeciras. María Cruz Martín Delgado: Hospital Universitario Torrejón-Universidad Francisco de Vitoria, Madrid. Elena Gallego, Juan Fernando Masa Jimenez: Hospital Universitario San Pedro de Alcántara, Cáceres. Gemma Gomà, Emi Díaz: Hospital Parc Taulí, Sabadell. Mercedes Ibarz, Diego De Mendoza: Hospital Universitari Sagrat Cor, Barcelona. Enric Barbeta, Victoria Alcaraz-Serrano, Joan Ramon Badia, Manuel Castella, Leticia Bueno, Adrian Ceccato, Andrea Palomeque, Laia Fernandez Barat, Catia Cillóniz, Pamela Conde, Javier Fernández, Albert Gabarrus, Karsa Kiarostami, Alexandre López-Gavín, Cecilia L Mantellini, Carla Speziale, Nil Vázquez, Hua Yang, Minlan Yang, Carlos Ferrando, Pedro Castro, Marta Arrieta, Jose Maria Nicolas, Rut Andrea: Hospital Clinic, Barcelona. Marta Barroso, Raquel Pérez, Sergio Álvarez, Dario Garcia-Gasulla, Adrián Tormos: Barcelona supercomputing Center, Barcelona. Luis Tamayo Lomas, Cesar Aldecoa, Rubén Herrán-Monge, José Ángel Berezo García, Pedro Enríquez Giraudo: Hospital Rio Hortega, Valladolid. Pablo Cardinal Fernández, Alberto Rubio López, Orville Báez Pravia: Hospitales HM, Madrid. Juan López Messa, Leire Pérez Bastida, Antonjo Alvarez Ruiz: Complejo Asistencial Universitario de Palencia, Palencia. José Trenado, Anna Parera Pous: Hospital Universitari MutuaTerrassa, Terrassa. Cristóbal Galbán, Ana López Lago, Eva Saborido Paz, Patricia Barral Segade: Hospital de Santiago de Compostela, Santiago. Ana Balan Mariño, Manuel Valledor Mendez: Hospital San Agustín, Aviles. Raúl de Frutos, Luciano Aguilera: Hospital Basurto, Basurto. Felipe Pérez-García, Esther López-Ramos, Ángela Leonor Ruiz-García, Belén Beteré: Hospital Universitario Príncipe Asturias, Alcalá de Henares. Rafael Blancas: Hospital Universitario del Tajo, Aranjuez. Cristina Dólera, Gloria Perez Planelles, Enrique Marmol Peis, Maria Dolores Martinez Juan, Miriam Ruiz Miralles, Eva Perez Rubio, Maria Van der Hofstadt Martin-Montalvo, Ángel Sánchez-Miralles, Tatiana Villada Warrington: Hospital Universitario Sant Joan d'Alacant, Alicante. Juan Carlos Pozo-Laderas: Hospital Universitario Reina Sofia. Ángel Estella, Sara Guadalupe Moreno Cano: Hospital de Jerez, Jerez. Federico Gordo: Hospital Universitario del Henares, Coslada. Basilisa Martínez Palacios: Hospital Universitario Infanta Cristina, Parla. Maite Nieto, María Teresa Nieto: Hospital de Segovia, Segovia. Sergio Ossa: Hospital de Burgos, Burgos. Ana Ortega: Hospital Montecelo, Pontevedra. Miguel Sanchez: Hospital Clinico, Madrid. Bitor Santacoma: Hospital Galdakao, Galdakao.

Funding

This study was supported by the Instituto de Salud Carlos III de Madrid (COV20/00110, ISCIII); Fondo Europeo de Desarrollo Regional (FEDER); "Una manera de hacer Europa"; and Centro de Investigación Biomédica En Red – Enfermedades Respiratorias (CIBERES). DdGC has received financial support from the Instituto de Salud Carlos III (Miguel Servet 2020: CP20/00041), co-funded by European Social Fund (ESF)/ "Investing in your future". CC received a grant from the Fondo de Investigación Sanitaria (PI19/00207), Instituto de Salud Carlos III, co-funded by the European Union.

Supplementary materials

Supplementary material associated with this article can be found, in the online version, at [doi:10.1016/j.pulmoe.2023.01.007](https://doi.org/10.1016/j.pulmoe.2023.01.007).

References

1. WHO Coronavirus (COVID-19) Dashboard n.d. <https://covid19.who.int> [Accessed 19 April 2021].
2. Kim L, Garg S, O'Halloran A, Whitaker M, Pham H, Anderson EJ, et al. Risk factors for intensive care unit admission and in-hospital mortality among hospitalized adults identified through the US Coronavirus disease 2019 (COVID-19)-associated hospitalization surveillance network (COVID-NET). *Clin Infect Dis*. 2021;72:e206–14. <https://doi.org/10.1093/cid/ciaa1012>.
3. Kompaniyets L, Pennington AF, Goodman AB, Rosenblum HG, Belay B, Ko JY, et al. Underlying medical conditions and severe illness among 540,667 adults hospitalized with COVID-19, March 2020–March 2021. *Prev Chronic Dis*. 2021;18:E66. <https://doi.org/10.5888/pcd18.210123>.
4. Lee JY, Kim HA, Huh K, Hyun M, Rhee JY, Jang S, et al. Risk factors for mortality and respiratory support in elderly patients hospitalized with COVID-19 in Korea. *J Korean Med Sci*. 2020;35:e223. <https://doi.org/10.3346/jkms.2020.35.e223>.
5. Dres M, Hajage D, Lebbah S, Kimmoun A, Pham T, Béduneau G, et al. Characteristics, management, and prognosis of elderly patients with COVID-19 admitted in the ICU during the first wave: insights from the COVID-ICU study : prognosis of COVID-19 elderly critically ill patients in the ICU. *Ann Intensive Care*. 2021;11:77. <https://doi.org/10.1186/s13613-021-00861-1>.
6. Lim ZJ, Subramaniam A, Ponnappa Reddy M, Blecher G, Kadam U, Afroz A, et al. Case fatality rates for patients with COVID-19 requiring invasive mechanical ventilation. A meta-analysis. *Am J Respir Crit Care Med*. 2021;203:54–66. <https://doi.org/10.1164/rccm.202006-2405OC>.
7. Tanaka C, Tagami T, Nakayama F, Kudo S, Takehara A, Fukuda R, et al. Association between mortality and age among mechanically ventilated COVID-19 patients: a Japanese nationwide COVID-19 database study. *Ann Intensive Care*. 2021;11:171. <https://doi.org/10.1186/s13613-021-00959-6>.
8. Torres A, Arguimbau M, Bermejo-Martín J, Campo R, Ceccato A, Fernandez-Barat L, et al. CIBERESUCICVID: a strategic project for a better understanding and clinical management of COVID-19 in critical patients. *Arch Bronconeumol*. 2021;57:1–2. <https://doi.org/10.1016/j.arbres.2020.10.021>.
9. Torres A, Motos A, Ceccato A, Bermejo-Martín J, de Gonzalo-Calvo D, Pérez R, et al. Methodology of a large multicenter observational study of patients with COVID-19 in Spanish Intensive Care Units. *Arch Bronconeumol*. 2022;58(Suppl 1):22–31. <https://doi.org/10.1016/j.arbres.2022.03.010>.

10. STROBE – Strengthening the reporting of observational studies in epidemiology n.d. <https://www.strobe-statement.org/> [Accessed 25 October 2021].
11. Torres A, Niederman MS, Chastre J, Ewig S, Fernandez-Vandellos P, Hanberger H, et al. International ERS/ESICM/ESCMID/ALAT guidelines for the management of hospital-acquired pneumonia and ventilator-associated pneumonia: guidelines for the management of hospital-acquired pneumonia (HAP)/ventilator-associated pneumonia (VAP) of the European Respiratory Society (ERS), European Society of Intensive Care Medicine (ESICM), European Society of Clinical Microbiology and Infectious Diseases (ESCMID) and Asociación Latinoamericana del Tórax (ALAT). *Eur Respir J*. 2017;50:1700582. <https://doi.org/10.1183/13993003.00582-2017>.
12. Torres A, Motos A, Riera J, Fernández-Barat L, Ceccato A, Pérez-Arnal R, et al. The evolution of the ventilatory ratio is a prognostic factor in mechanically ventilated COVID-19 ARDS patients. *Crit Care*. 2021;25:331. <https://doi.org/10.1186/s13054-021-03727-x>.
13. Austin PC, Lee DS, Fine JP. Introduction to the analysis of survival data in the presence of competing risks. *Circulation*. 2016;133:601–9. <https://doi.org/10.1161/CIRCULATIONAHA.115.017719>.
14. Gray RJ. A class of K-sample tests for comparing the cumulative incidence of a competing risk. *Ann Stat*. 1988;16:1141–54.
15. Sterne JAC, White IR, Carlin JB, Spratt M, Royston P, Kenward MG, et al. Multiple imputation for missing data in epidemiological and clinical research: potential and pitfalls. *BMJ*. 2009;338:b2393. <https://doi.org/10.1136/bmj.b2393>.
16. Wang Y, Lu X, Li Y, Chen H, Chen T, Su N, et al. Clinical course and outcomes of 344 intensive care patients with COVID-19. *Am J Respir Crit Care Med*. 2020;201:1430–4. <https://doi.org/10.1164/rccm.202003-0736LE>.
17. Huang C, Wang Y, Li X, Ren L, Zhao J, Hu Y, et al. Clinical features of patients infected with 2019 novel coronavirus in Wuhan, China. *Lancet*. 2020;395:497–506. [https://doi.org/10.1016/S0140-6736\(20\)30183-5](https://doi.org/10.1016/S0140-6736(20)30183-5).
18. Richardson S, Hirsch JS, Narasimhan M, Crawford JM, McGinn T, Davidson KW, et al. Presenting characteristics, comorbidities, and outcomes among 5700 patients hospitalized with COVID-19 in the New York City area. *JAMA*. 2020;323:2052–9. <https://doi.org/10.1001/jama.2020.6775>.
19. Myers LC, Parodi SM, Escobar GJ, Liu VX. Characteristics of hospitalized adults with COVID-19 in an integrated health care system in California. *JAMA*. 2020;323:2195–8. <https://doi.org/10.1001/jama.2020.7202>.
20. Grasselli G, Greco M, Zanella A, Albano G, Antonelli M, Bellani G, et al. Risk factors associated with mortality among patients with COVID-19 in intensive care units in Lombardy, Italy. *JAMA Intern Med*. 2020;180:1345–55. <https://doi.org/10.1001/jamainternmed.2020.3539>.
21. CDC. Cases, data, and surveillance. Centers for Disease Control and Prevention; 2020 <https://www.cdc.gov/coronavirus/2019-ncov/covid-data/investigations-discovery/hospitalization-death-by-age.html> [Accessed 10 January 2022].
22. Jung C, Flaatten H, Fjølner J, Bruno RR, Wernly B, Artigas A, et al. The impact of frailty on survival in elderly intensive care patients with COVID-19: the COVIP study. *Crit Care*. 2021;25:149. <https://doi.org/10.1186/s13054-021-03551-3>.
23. Hol L, Van Oosten P, Nijbroek S, Tsonas A, Botta M, Neto AS, et al. The effect of age on ventilation management and clinical outcomes in critically ill COVID-19 patients—insights from the ProVENT-COVID study. *Aging*. 2022;14:1087–109. <https://doi.org/10.18632/aging.203863>.
24. Leoni MLG, Lombardelli L, Colombi D, Bignami EG, Pergolotti B, Repetti F, et al. Prediction of 28-day mortality in critically ill patients with COVID-19: development and internal validation of a clinical prediction model. *PLoS ONE*. 2021;16:e0254550. <https://doi.org/10.1371/journal.pone.0254550>.
25. Guillon A, Hermetet C, Barker KA, Jouan Y, Gaborit C, Ehrmann S, et al. Long-term survival of elderly patients after intensive care unit admission for acute respiratory infection: a population-based, propensity score-matched cohort study. *Crit Care*. 2020;24:384. <https://doi.org/10.1186/s13054-020-03100-4>.
26. Roger C, Collange O, Mezzarobba M, Abou-Arab O, Teule L, Garnier M, et al. French multicentre observational study on SARS-CoV-2 infections intensive care initial management: the FRENCH CORONA study. *Anaesth Crit Care Pain Med*. 2021;40:100931. <https://doi.org/10.1016/j.accpm.2021.100931>.
27. Flaatten H, De Lange DW, Morandi A, Andersen FH, Artigas A, Bertolini G, et al. The impact of frailty on ICU and 30-day mortality and the level of care in very elderly patients (≥ 80 years). *Intensive Care Med*. 2017;43:1820–8. <https://doi.org/10.1007/s00134-017-4940-8>.
28. Malik P, Patel U, Mehta D, Patel N, Kelkar R, Akmah M, et al. Biomarkers and outcomes of COVID-19 hospitalisations: systematic review and meta-analysis. *BMJ Evid Based Med*. 2021;26:107–8. <https://doi.org/10.1136/bmjebm-2020-111536>.
29. Henry BM, de Oliveira MHS, Benoit S, Plebani M, Lippi G. Hematologic, biochemical and immune biomarker abnormalities associated with severe illness and mortality in coronavirus disease 2019 (COVID-19): a meta-analysis. *Clin Chem Lab Med*. 2020;58:1021–8. <https://doi.org/10.1515/cclm-2020-0369>.
30. Ecartot F, Rebora P, Focà E, Zucchelli A, Citerio G, Valsecchi MG, et al. Mechanical ventilation in COVID-19 patients: insights into the role of age and frailty from a multicentre observational study. *Aging Dis*. 2022;13:340–3. <https://doi.org/10.14336/AD.2022.0127>.
31. Pepe M, Maroun-Eid C, Romero R, Arroyo-Espliguero R, Fernández-Rozas I, Aparisi A, et al. Clinical presentation, therapeutic approach, and outcome of young patients admitted for COVID-19, with respect to the elderly counterpart. *Clin Exp Med*. 2021;21:249–68. <https://doi.org/10.1007/s10238-021-00684-1>.
32. Peñuelas O, Del Campo-Albendea L, de Aledo ALG, Añón JM, Rodríguez-Solís C, Mancebo J, et al. Long-term survival of mechanically ventilated patients with severe COVID-19: an observational cohort study. *Ann Intensive Care*. 2021;11:143. <https://doi.org/10.1186/s13613-021-00929-y>.
33. Elsayed HH, Hassaballa AS, Ahmed TA, Gumaa M, Sharkawy HY, Moharram AA. Variation in outcome of invasive mechanical ventilation between different countries for patients with severe COVID-19: a systematic review and meta-analysis. *PLoS ONE*. 2021;16:e0252760. <https://doi.org/10.1371/journal.pone.0252760>.
34. Andrei S, Valeanu L, Stefan MG, Longrois D, Popescu M, Stefan G, et al. Outcomes of COVID-19 critically ill extremely elderly patients: analysis of a large, national, observational cohort. *J Clin Med*. 2022;11:1544. <https://doi.org/10.3390/jcm11061544>.
35. Ferrer M, Traverso C, Cilloniz C, Gabarrus A, Ranzani OT, Polverino E, et al. Severe community-acquired pneumonia: characteristics and prognostic factors in ventilated and non-ventilated patients. *PLoS ONE*. 2018;13:e0191721. <https://doi.org/10.1371/journal.pone.0191721>.